

Table of Contents

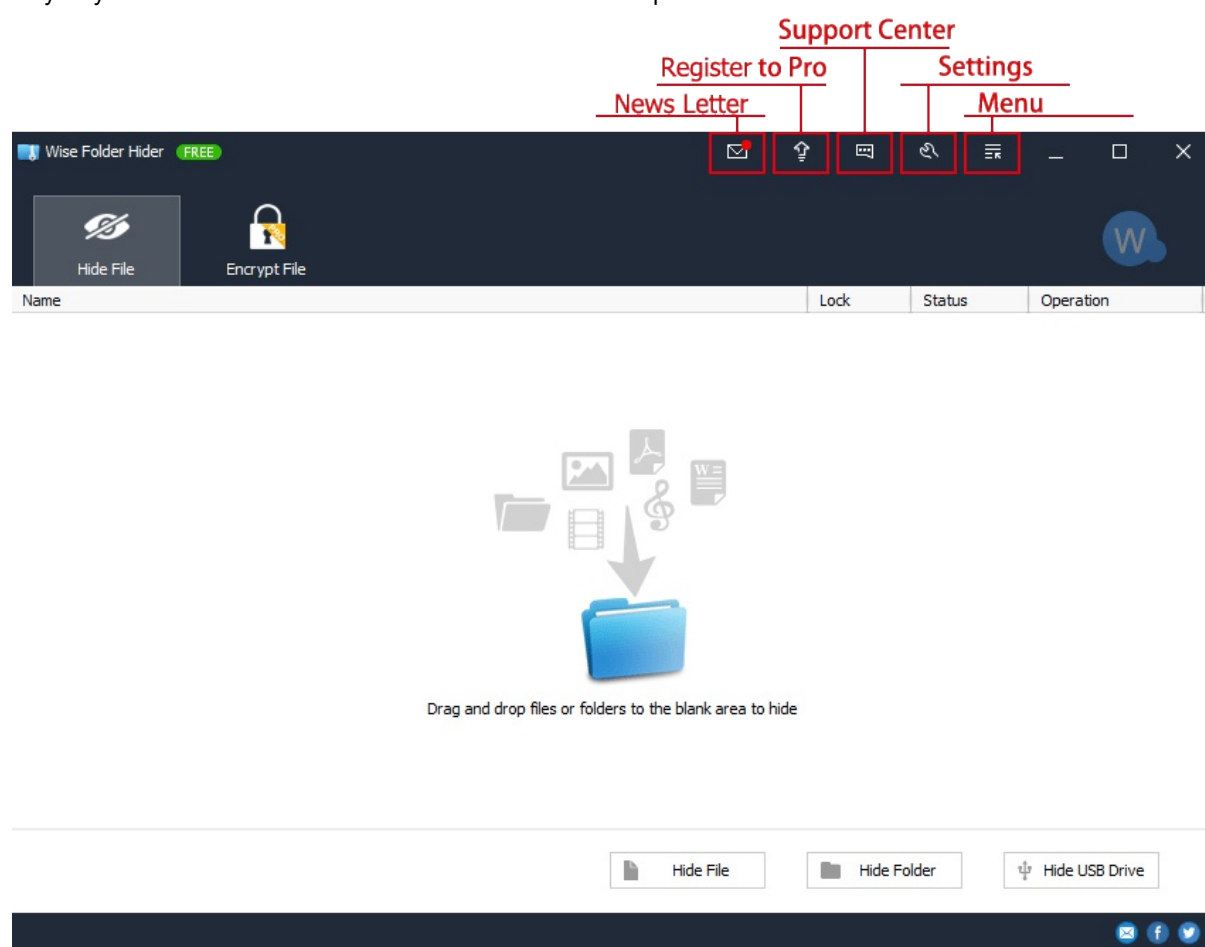
Welcome	1.1
1. Overview	1.2
1.1 Features	1.2.1
1.2 System Requirements	1.2.2
1.3 Install, Uninstall, Upgrade	1.2.3
2. How To Use	1.3
2.1 Password	1.3.1
2.1.1 Set Password	1.3.1.1
2.1.2 Change Password	1.3.1.2
2.1.3 Forgot Password	1.3.1.3
2.2 Hide and Unhide	1.3.2
2.3 Hide USB Device	1.3.3
2.4 Encrypt and Decrypt	1.3.4
3. Advanced	1.4
3.1 Menu	1.4.1
3.2 Settings	1.4.2
4. About WiseCleaner	1.5
4.1 About Us	1.5.1
4.2 Awards	1.5.2
4.3 Help Us	1.5.3

Wise Folder Hider Manual

Wise Folder Hider protects your private and important data from others' eyes.

Have you ever been bothered by your private data or important files exposed to others? Have you realized it is because you share one computer, USB drive, removable HDD drive, ect. with others that they unintentionally reveal or deliberately pry into your privacy? Have you ever considered to encrypt or hide your sensitive data or important files by some reliable software?

Wise Folder Hider is your best choice to hide sensitive or important files and folders on local partitions or removable devices. The data can't be accessed by other programs or other operating systems such as DOS. The only way to access or unhide these data is to enter the valid password.



©2006-2020 WiseCleaner.com all right reserved, powered by Gitbook Edited: 2020-06-02

Overview

1.1 Key Features

1.2 System Requirements

1.3 Install, Uninstall, Upgrade

©2006-2020 WiseCleaner.com all right reserved, powered by GitbookEdited: 2020-06-02

Key Features

- Hide your private files, images, documents and videos with click of a button.
- Encrypt confidential files and folders in Lockers.
- Safe with double password protection.
- Create portable self-executable Lockers in removable storage device.
- Support of Dragging and Dropping.

©2006-2020 WiseCleaner.com all right reserved, powered by GitbookEdited: 2020-06-02

System Requirements

Wise Folder Hider will run on any PC running Microsoft Windows XP or later. If you're running one of the following operating systems, it's OK to run Wise Folder Hider:

1. Windows 10 (All Windows Editions, including both 32-bit and 64-bit)
2. Windows 8 (All Windows Editions, including both 32-bit and 64-bit)
3. Windows 7 (All Windows Editions, including both 32-bit and 64-bit)
4. Windows Vista (All Windows Editions, including both 32-bit and 64-bit)
5. Windows XP (All Windows Editions, including both 32-bit and 64-bit)

Since Wise Folder Hider is a small and quick program, it takes less memory and needs fewer hard drive requirements.

Wise Folder Hider does not support Mac OS or Linux.

©2006-2020 WiseCleaner.com all right reserved, powered by GitbookEdited: 2020-06-02

Download, Install, Uninstall and Upgrade

You can refer to the following instructions about [how to download Wise Folder Hider](#), [how to install Wise Folder Hider](#), [how to uninstall Wise Folder Hider](#) and [how to update Wise Folder Hider](#).

1. Download

You are always welcome to download Wise Folder Hider from our official site:

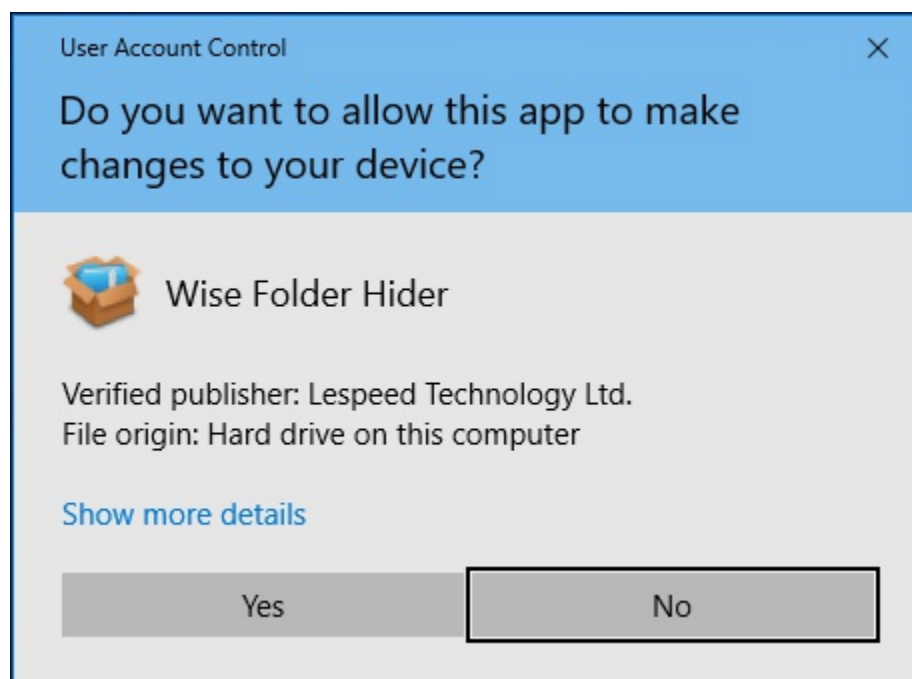
Homepage: <https://www.wisecleaner.com>

Wise Folder Hider: <https://www.wisecleaner.com/wise-folder-hider-free.html>

Download Center: <https://www.wisecleaner.com/download.html>

2. Install

After Wise Folder Hider download finishes, please find out the setup file, double click WFHSetup.exe, and then click **Yes** after the following dialog box appears.



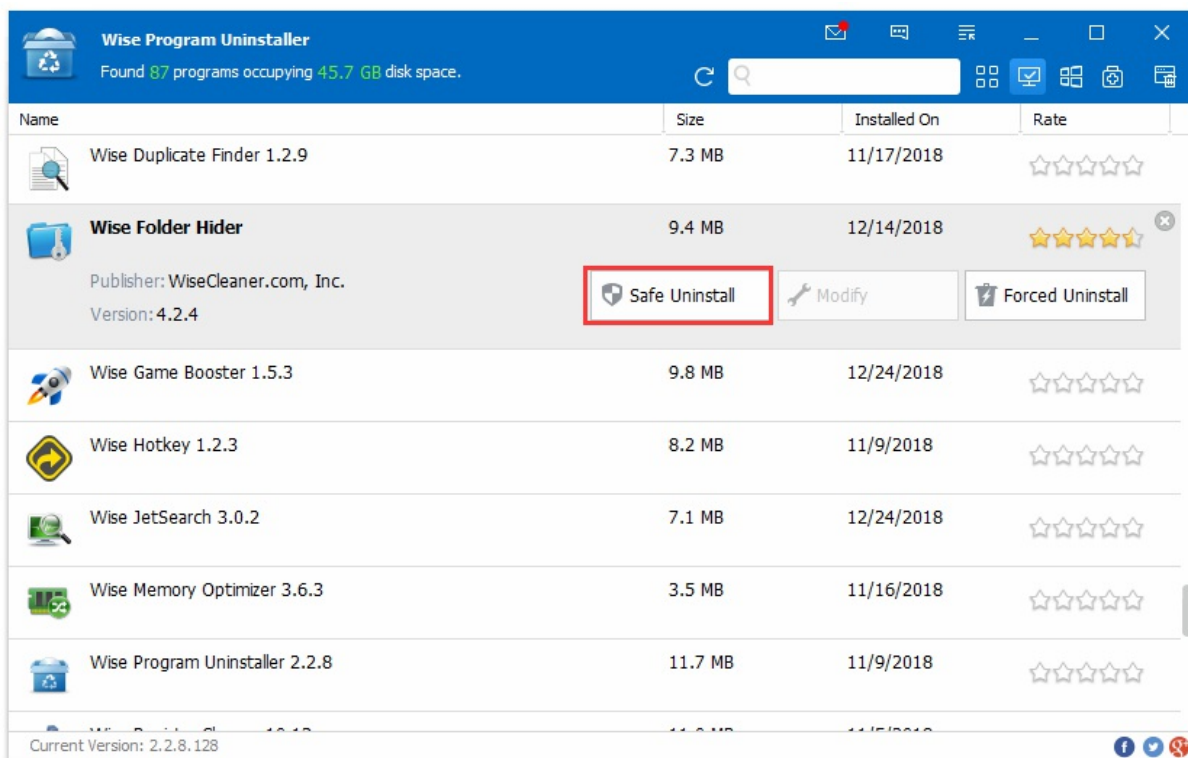
Then the installer will start automatically and will guide you through the rest of the installation process. :)

3. Remove/Uninstall

There are 3 methods to uninstall a program. Please ensure that the application has been closed.

Method 1: Use Wise Program Uninstaller

If you have installed [Wise Program Uninstaller](#), just open it, scroll and find the program you want to uninstall, select it, and then click **Safe Uninstall**. This is the simplest way to uninstall a program and no leftovers.



Method 2: Use the application self-uninstall program

Please open Wise Folder Hider folder, find and run  `unins000.exe`

- If you are running a **32bit** system, the folder is: **C:\Program Files\Wise\Wise Folder Hider**
- If you are running a **64bit** system, the folder is: **C:\Program Files (x86)\Wise\Wise Folder Hider**

Method 3: Use system Control Panel

- If you are running a XP system, please click **Start – Control Panel – Add or Remove Programs**, scroll down and find the program you want to uninstall, then click **Remove**
- If you are running a Vista/Win7 system, please click **Start – Control Panel – Programs – Uninstall a Program**, scroll down and find the program you want to uninstall, then click **Uninstall**
- If you are running a Win 8 system, please click **Settings – Control Panel - Programs – Uninstall a Program**, scroll down and find the program you want to uninstall, then click **Uninstall**
- If you are running a Win 10 system, please click **Start – Settings – System – Apps & Features**, scroll down and find the program you want to uninstall, then click **Uninstall**

4. Upgrade

Please run the application, click **Menu - Check for Updates**.

Also, you can download the latest version from: <https://www.wisecleaner.com/download.html>. Please ensure Wise Folder Hider has been closed, and then install the latest version.

The minor upgrade can directly install the new version (for example: 1.0-1.x). The major upgrade needs to uninstall the old version, and then install the new version (for example: 1.x-2.x).

How To Use

[2.1 Manage Passwords](#)

[2.2 Hide & Unhide Files \(Folders\)](#)

[2.3 Hide USB Drive](#)

[2.4 Encrypt & Decrypt](#)

©2006-2020 WiseCleaner.com all right reserved, powered by GitbookEdited: 2020-06-02

Manage Passwords

[2.1.1 Set Password](#)

[2.1.2 Change Password](#)

[2.1.3 Forgot Password](#)

©2006-2020 WiseCleaner.com all right reserved, powered by GitbookEdited: 2020-06-02

Set Password

Using Wise Folder Hider to protect files (folders) involves 2 types of passwords: the login password, and secondary passwords (files and folders passwords, USB device passwords, encrypted files passwords). Among them, the login password is the most important and must be set. The secondary password is optional and depends on whether you need it.

1. Set the login password

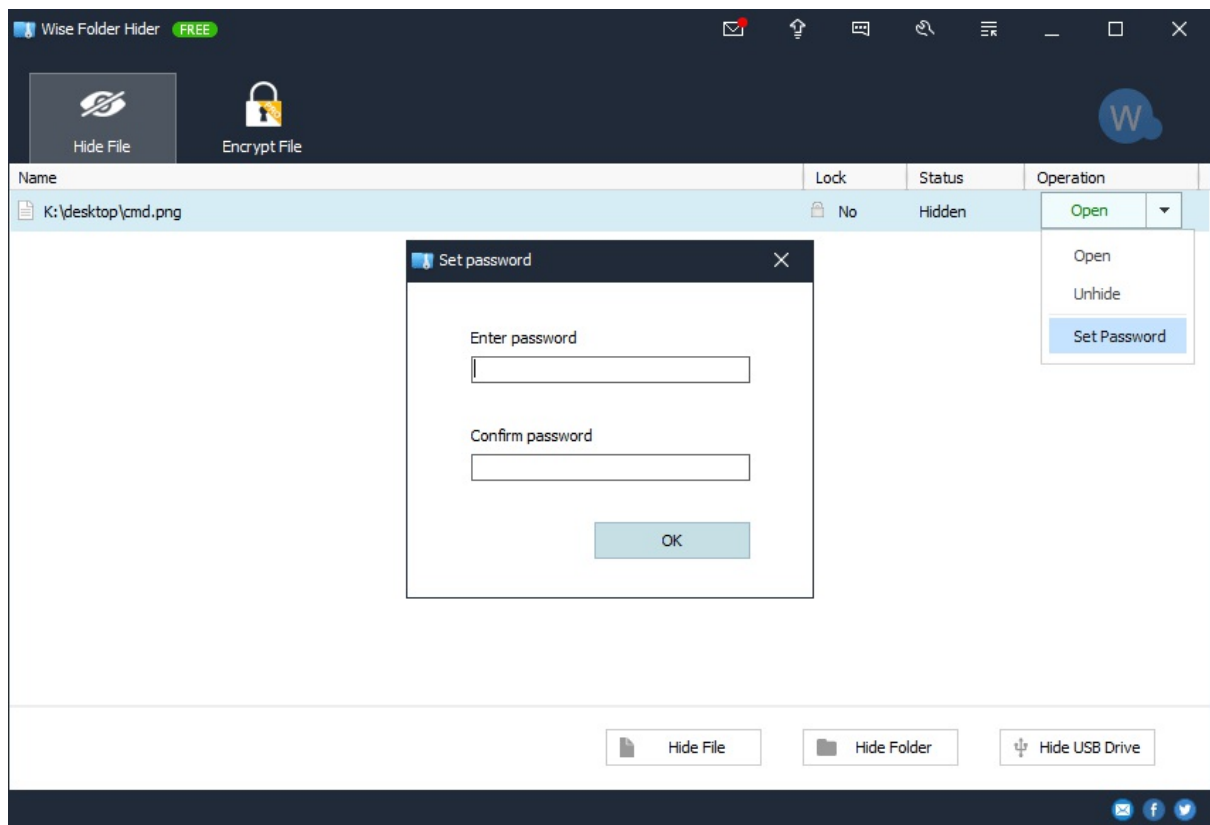
When you install and run Wise Folder Hider for the first time, the program will ask you to set a login password before entering.



2. Set secondary password

Wise Folder Hider supports setting secondary passwords for 3 types of items: hidden files and folders, hidden USB device, and encrypted locker. The way to set the secondary password is the same.

Select an item, left-click the drop-down menu, and select **Set Password**.



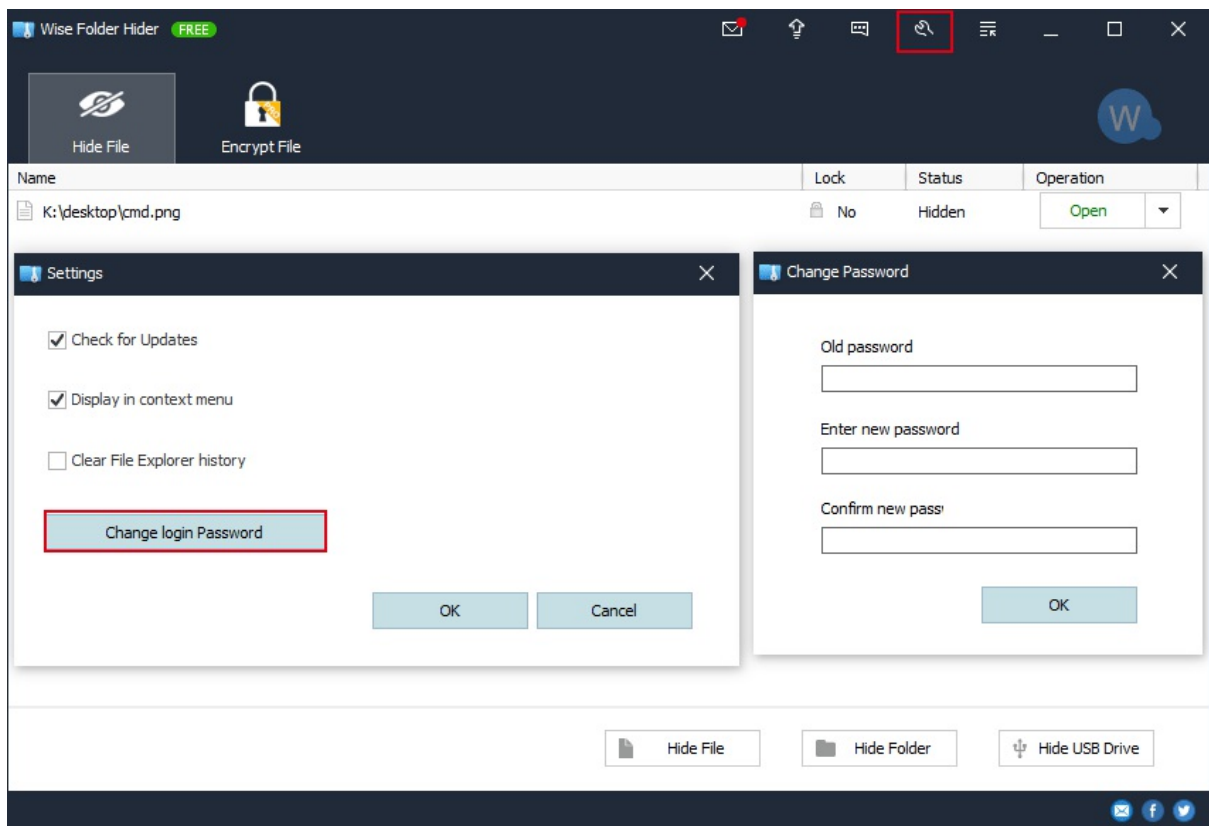
©2006-2020 WiseCleaner.com all right reserved, powered by GitbookEdited: 2020-06-02

Change Password

The user can change the password that has been set at any time, whether it is a login password or a secondary password, but you must know the current password.

1. Change the login password

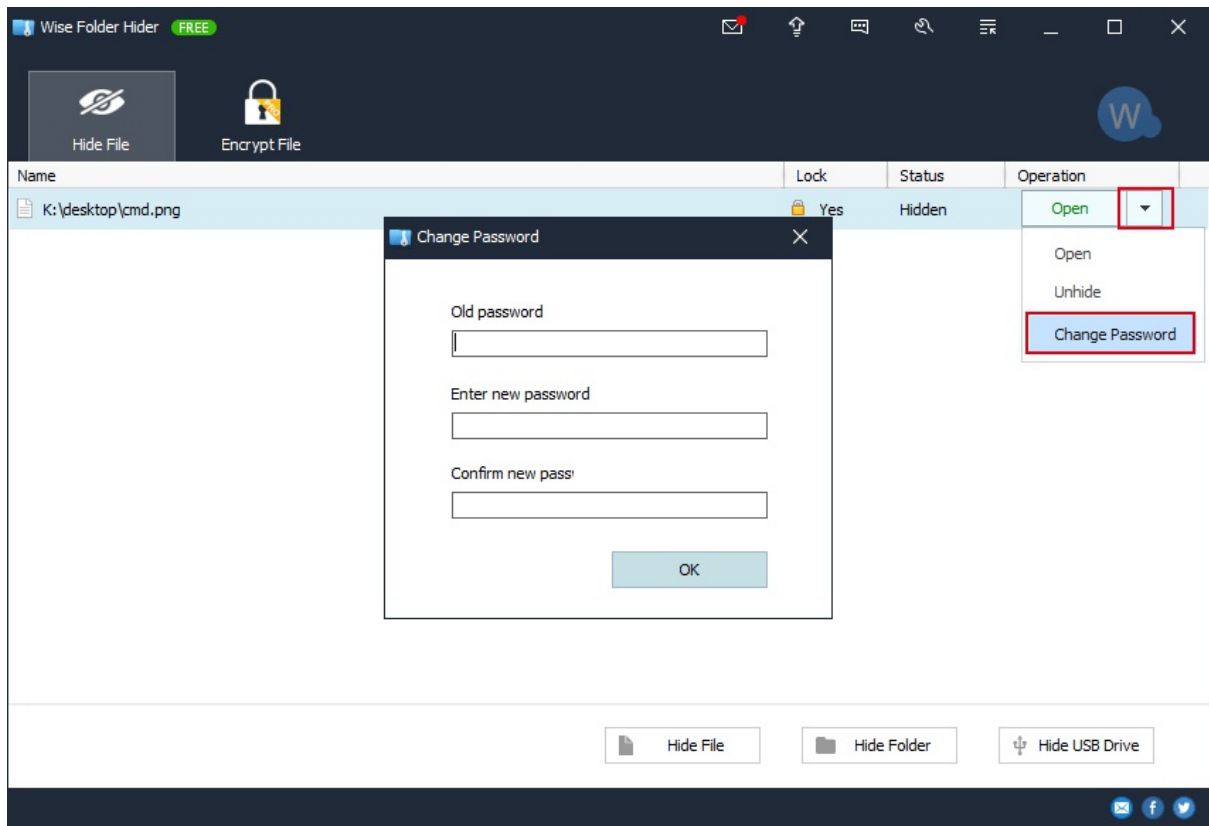
Open the main window of Wise Folder Hider, left-click the Settings icon (the wrench icon) in the upper right corner, click the **Change Login Password** button in the settings window, then enter the old password and the new password in the Change Password window.



2. Change the secondary password

Wise Folder Hider uses the same way to change the passwords of hidden files and folders, hidden USB device, and encrypted files.

Select the item that needs to change the secondary password, left-click the drop-down menu, and select **Change Password**.



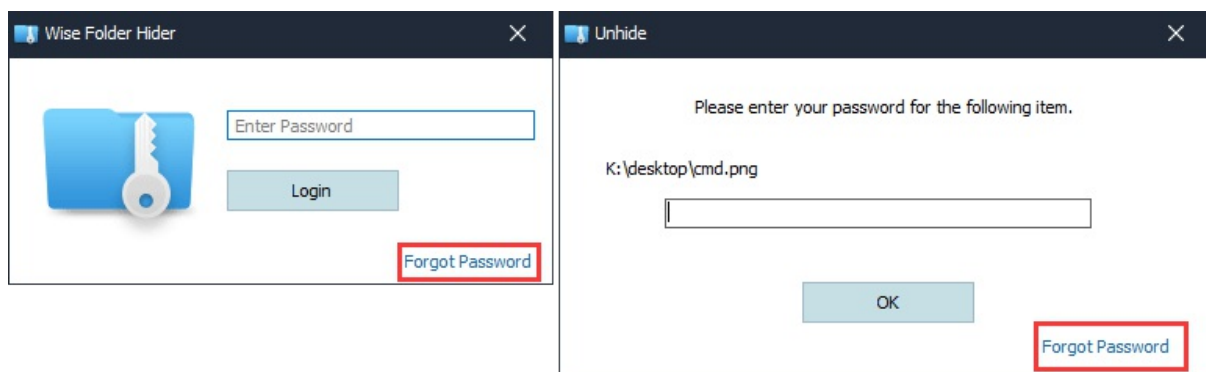
©2006-2020 WiseCleaner.com all right reserved, powered by GitbookEdited: 2020-06-02

Forgot Password

The security level of a password depends on the number of characters and the complexity of the password. The more complicated the password, the easier it is to be forgotten. If you really forget your password, please read the instructions below carefully.

1. Free version

If you are using the free version of Wise Folder Hider, please click **Forgot Password** in the lower right corner of the pop-up password window, and then read carefully [How to Retrieve the Lost Password of Wise Folder Hider](#), and choose the appropriate method.



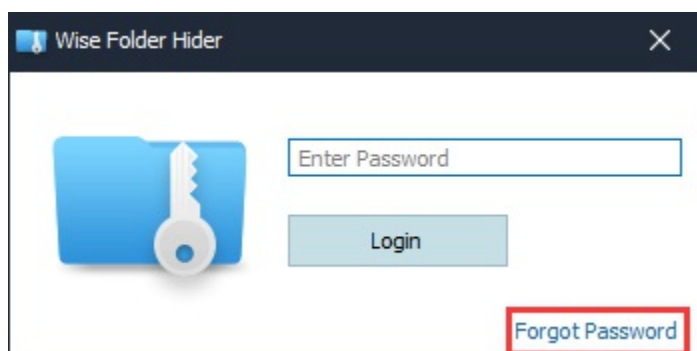
2. Pro version

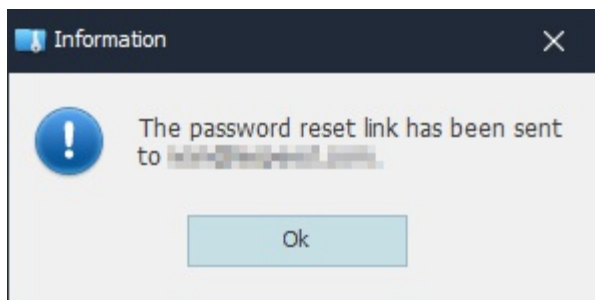
If you have purchased the license key of Wise Folder Hider and you are using the pro version,

Please ensure the internet connection is working well before clicking the "Forgot Password" button.

Step 1, Click Forgot Password

After clicking the button, the system sends a mail to your registered email address, and displays **The password reset link has been sent to xxxxxx.**





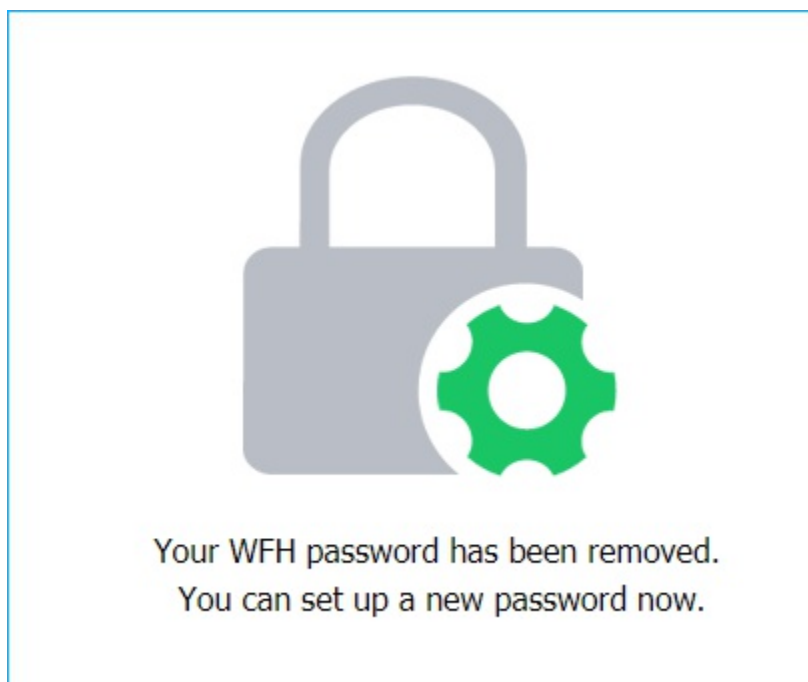
Please DO NOT click the button repeatedly! After the mail has been sent successfully, it may take a few minutes to receive due to network reasons. The mail may also be filtered into spam mailboxes as well.

Step 2, Delete the original password

Open the mailbox to view the email titled **Recover access to your WFH account**, and click the link **Click here**.



When you see the prompt message in the opened page **Your WFH password has been removed. You can set up a new password now**. It means that the original password has been deleted successfully.



Step 3, Set new password

Run Wise Folder Hider and set a new password.

Create Account

Create Wise Folder Hider Login Password

To use Wise Folder Hider, you need to set a login passwo

Enter Password

Confirm Password

OK Cancel

©2006-2020 WiseCleaner.com all right reserved, powered by GitbookEdited: 2020-06-02

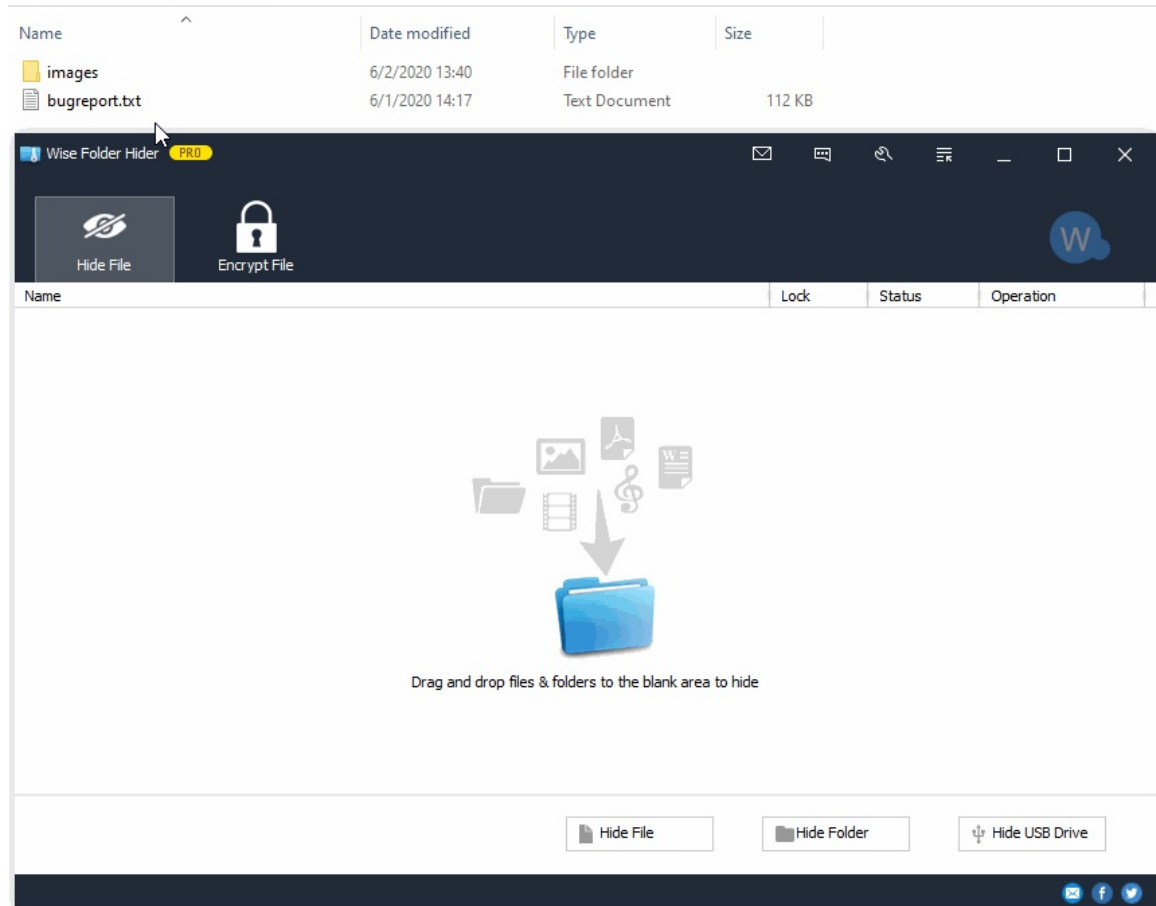
Hide & Unhide File (Folder)

1. Hide File and Folder

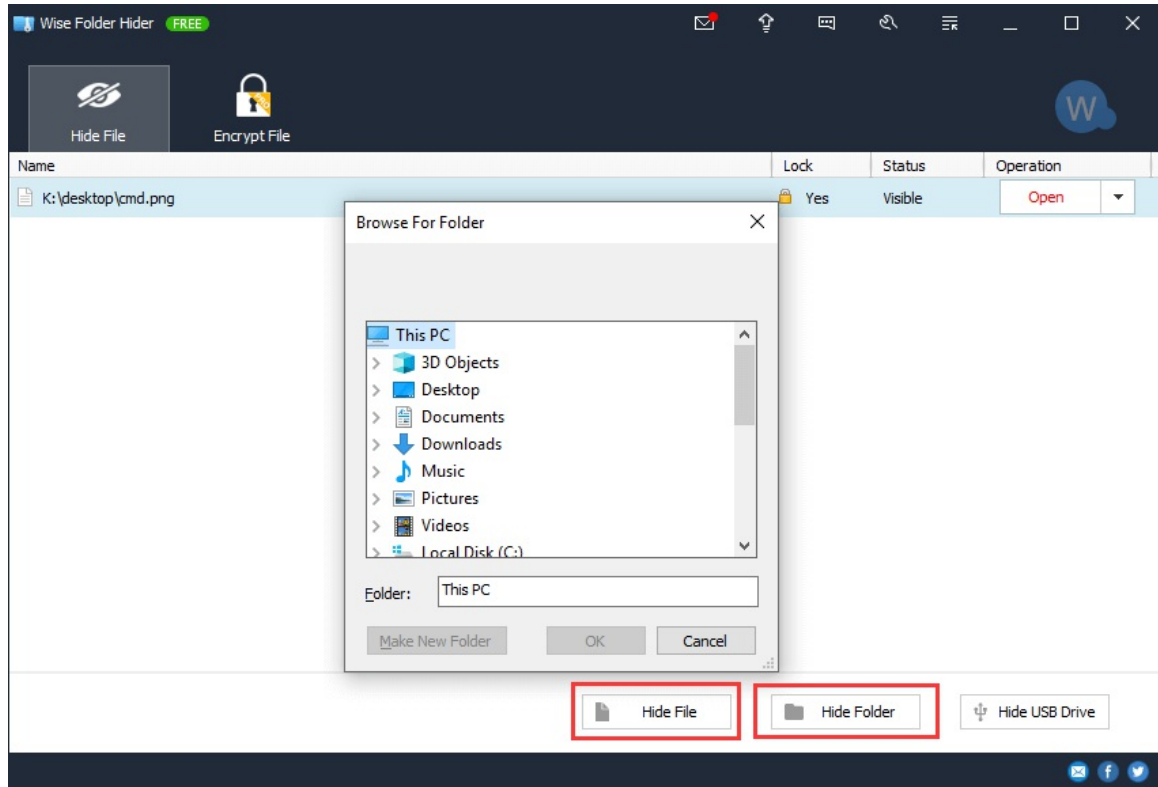
You can easily hide a file (folder) with 3 ways.

- **Drag & Drop** a file (folder) you want to protect to Wise Folder Hider window.

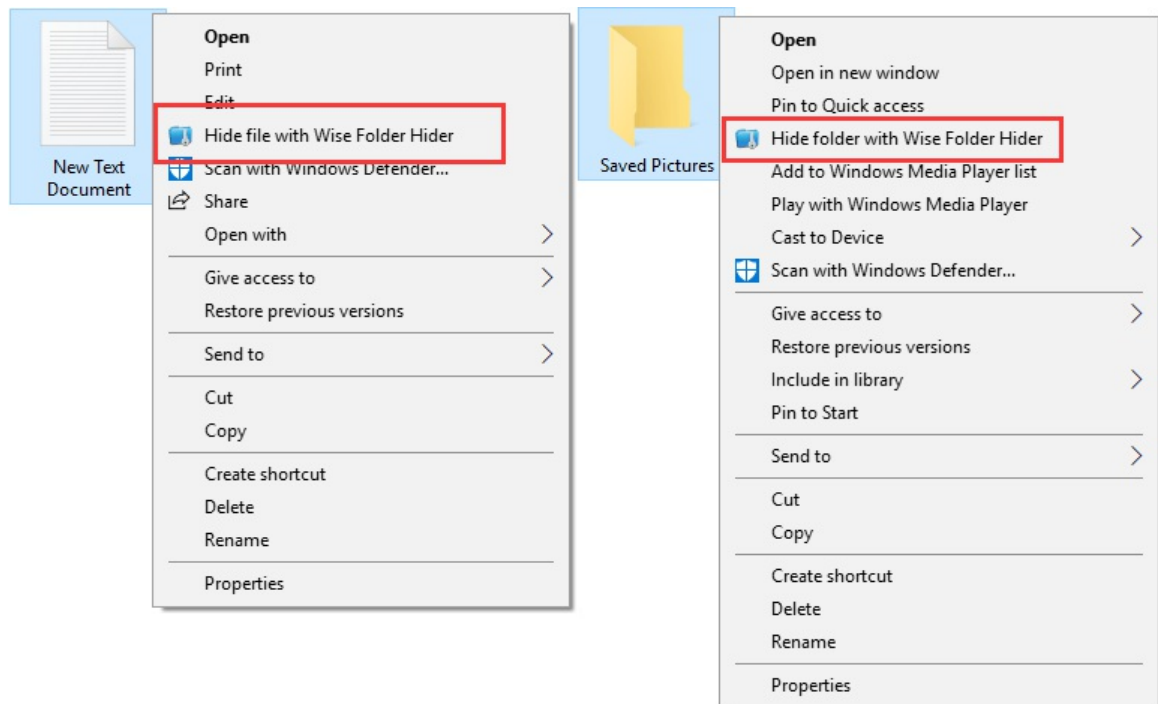
PC > Local Disk (M:) > test folder



- Click the buttons **Hide File** and **Hide Folder**

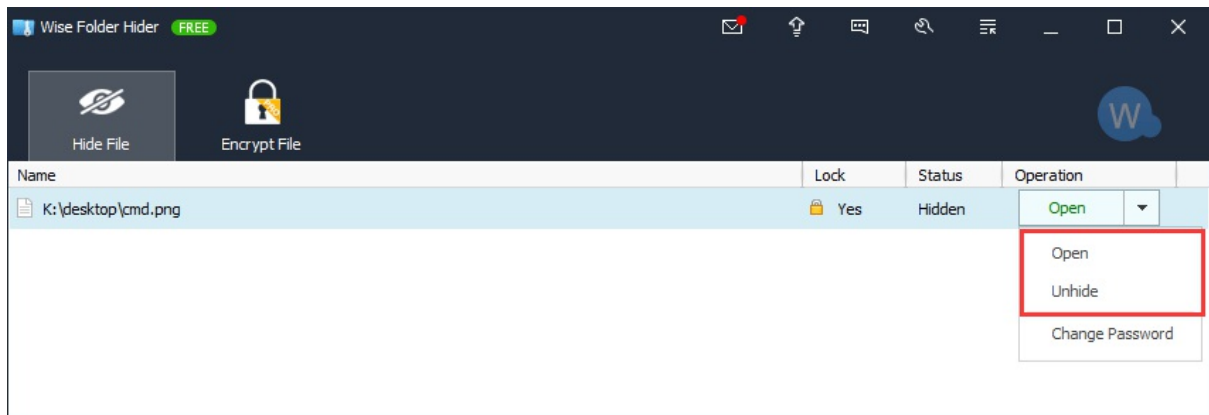


- Right-click on the file and folder which you want to protect, and then select **Hide file with Wise Folder Hider** or **Hide Folder with Wise Folder Hider**



2. Unhide File and Folder

For a hidden file and folder, there are 2 commands, **Open** and **Unhide**.



- **Open**

Open file (folder) location and make the hidden file (folder) **temporarily visible**. The file and folder will be hidden again automatically when you close Wise Folder Hider.

- **Unhide**

Open file (folder) location and make the hidden file (folder) **permanently visible**. You need to hide the file (folder) manually if you want to keep protecting the file.

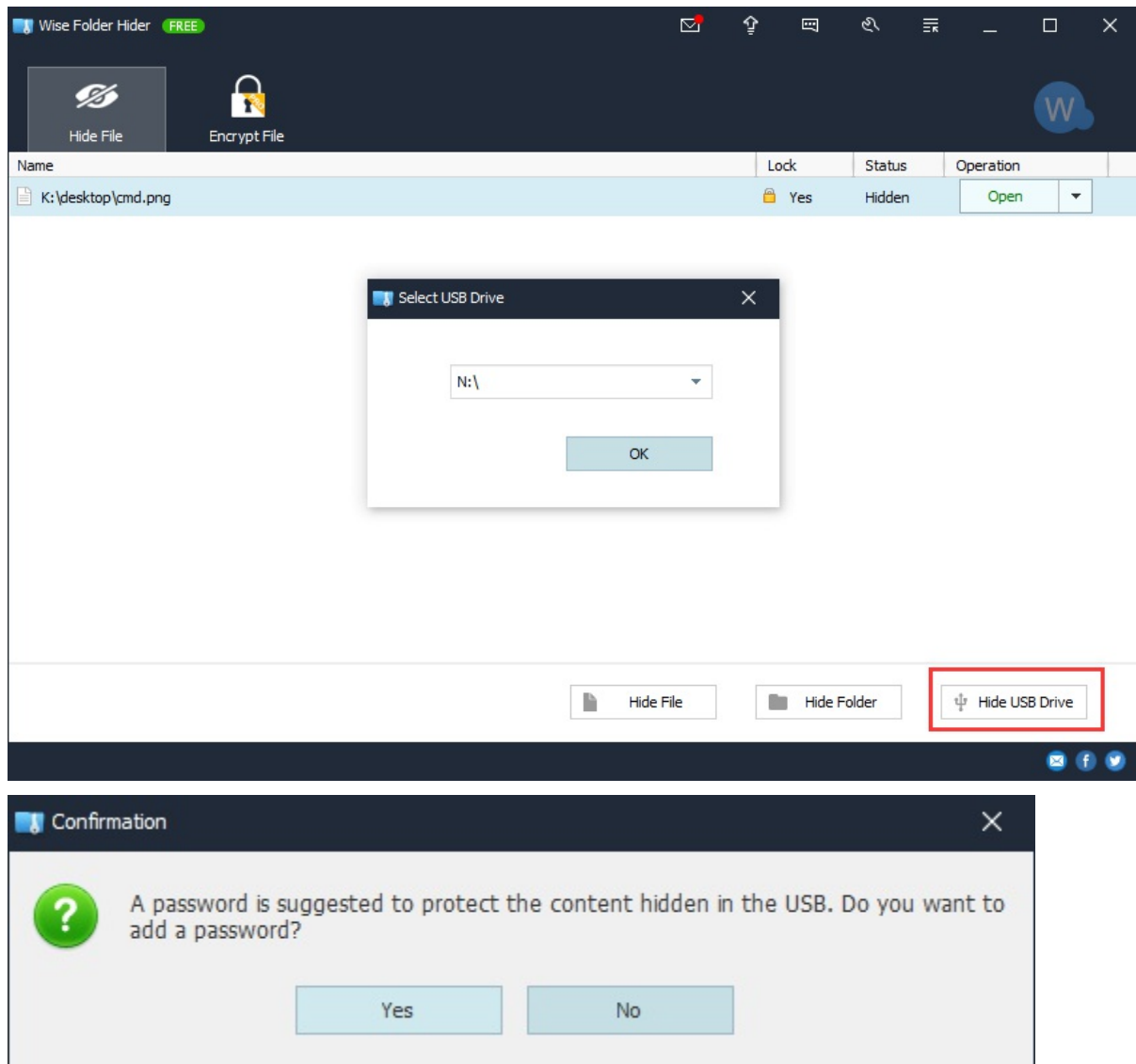
The difference between Open and Unhide: Open, the file is only temporarily visible. Unhide, the file is permanently visible.

Hide & Unhide USB Device

1. Hide USB Drive

Click the **Hide USB Drive** button at the bottom of Wise Folder Hider, and then select the drive which you want to hide. Please plug in a USB drive before you click the button.

Set a secondary password for the hidden drive is highly recommended.



2. Unhide USB Drive

There are also 2 commands for a hidden drive: **Open** and **Unhide**.

- **Open**

Open the hidden USB device and make the device **temporarily visible**. The USB drive will be hidden again automatically when you close Wise Folder Hider.

- **Unhide**

Open the hidden USB device and make the device **permanently visible**. You need to hide the USB device manually if you want to keep protecting it.

©2006-2020 WiseCleaner.com all right reserved, powered by GitbookEdited: 2020-06-02

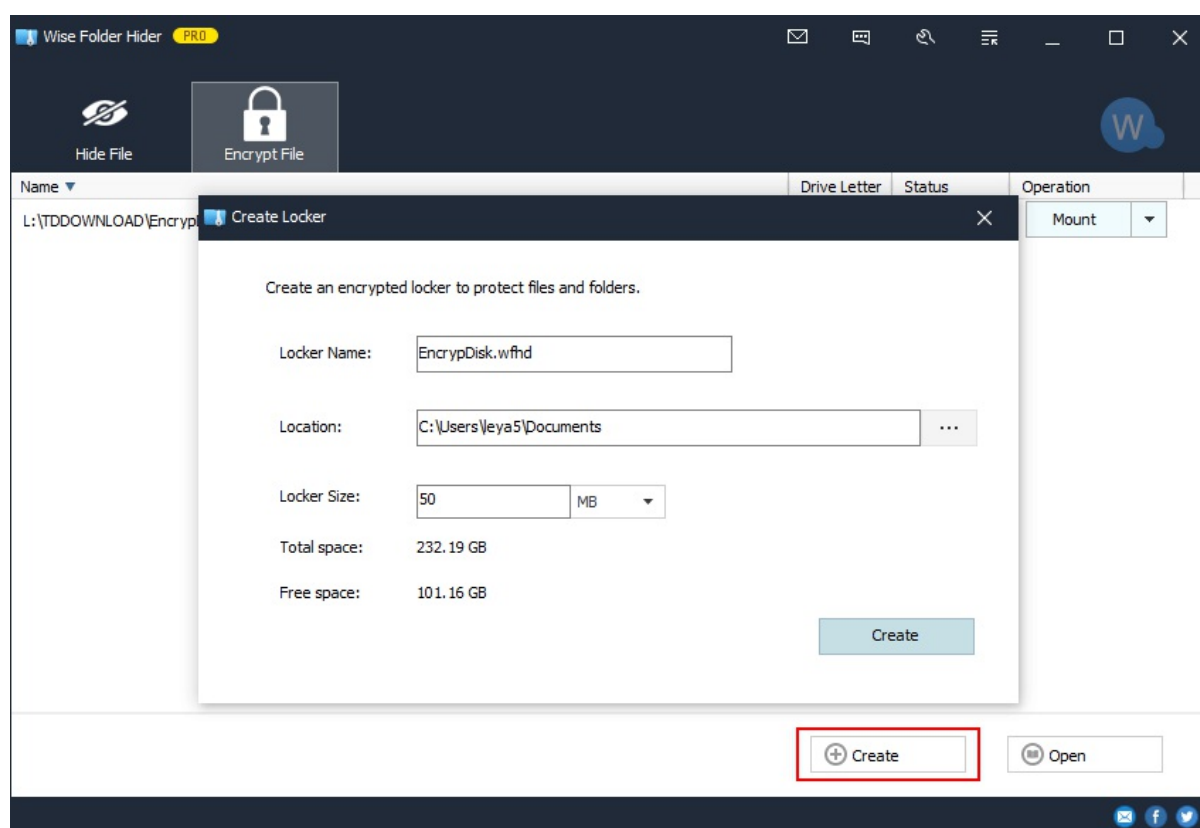
Encrypt & Decrypt

The encryption function of version 4 is essentially different from the previous versions. It does not directly encrypt files and folders, but first creates a Locker (an encrypted folder) and then moves the files and folders that need to be protected into this Locker.

1. Encrypt File and Folder

Step 1, Create a Locker

Open Wise Folder Hider and switch to Encrypt File tab, click the **Create** button at the bottom of the window. In the pop-up window, set the Locker properties, such as Name, Location, Size, etc.



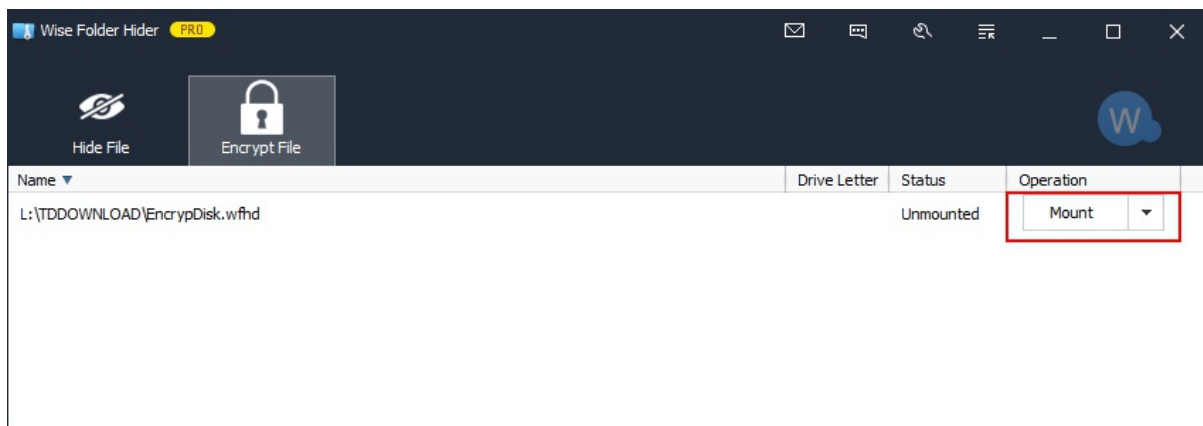
Once the size of the Locker is set, it cannot be changed. Recommendation: Choose a partition with a large free space to create a locker and set a suitable size.

Step 2, Move the files and folders which need to be encrypted to the locker

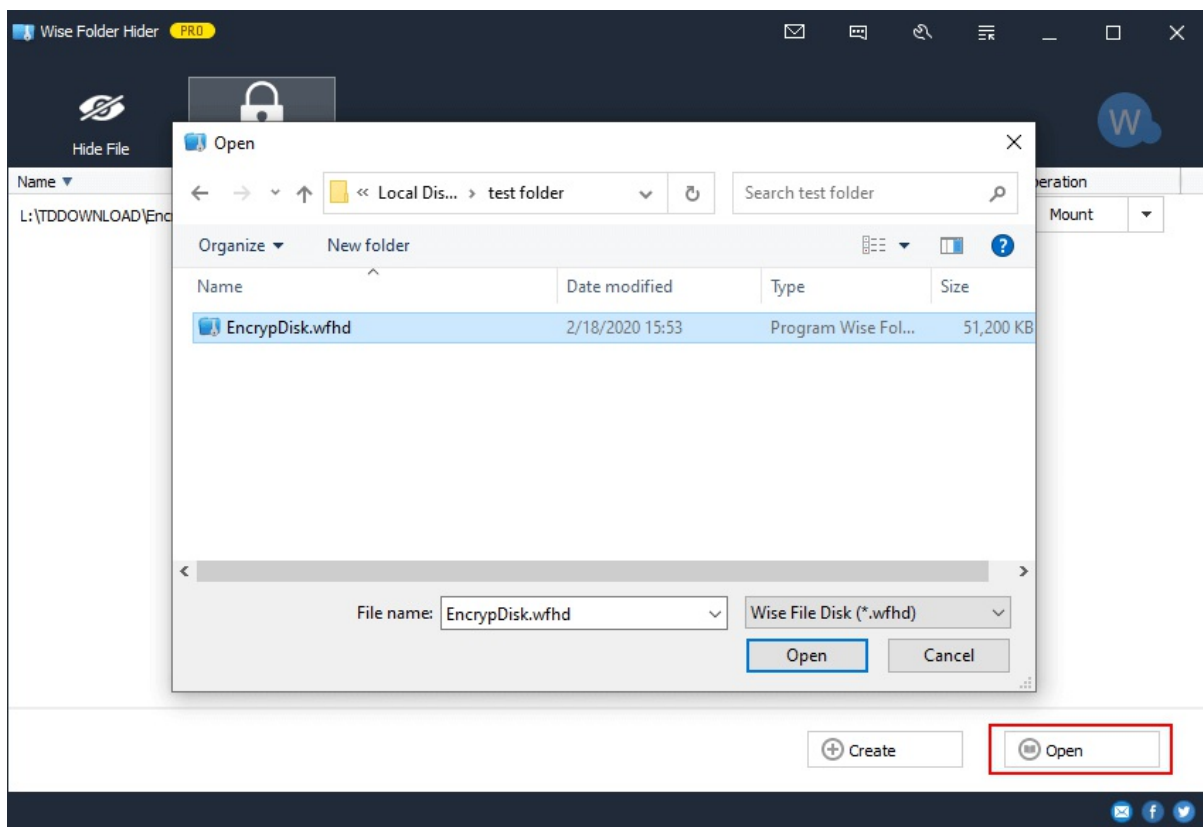
After moving files and folders to the locker, Unmount the locker, and then close Wise Folder Hider. These files and folders are encrypted.

2. Decrypt File and Folder

If you need to view the encrypted file, you need to run Wise Folder Hider first, switch to **Encrypt File**, select the locker where the file is located, click the **Mount** button to open the locker, and then you can open and edit the files.



If the locker is not displayed in Wise Folder Hider, you need to click the **Open** button first to find the locker file.



There are 4 commands for a locker: **Mount**, **Unmount**, **Delete**, and **Set Password**.

- **Mount**
If a locker status is **unmounted**, you can click **Mount** to open this locker.
- **Unmount**
If a locker status is **mounted**, all files and folders of this locker are visible and editable. You can click **Unmount** to encrypt this locker again.
- **Delete**
If you do not want to continue to use a locker, please click the **Delete** button to stop protecting the locker, and then delete the locker file, such as **Mylocker.wfhd**.

This command will stop protecting the locker. Any person can Copy, Move, and Delete this locker.

- **Set Password**

For a locker, we highly recommend setting a password different from the login password, especially if you need to copy the locker files to a USB drive and then open it in another system. This password can effectively prevent unauthorized access.

©2006-2020 WiseCleaner.com all right reserved, powered by GitbookEdited: 2020-06-02

Advanced

3.1 Menu

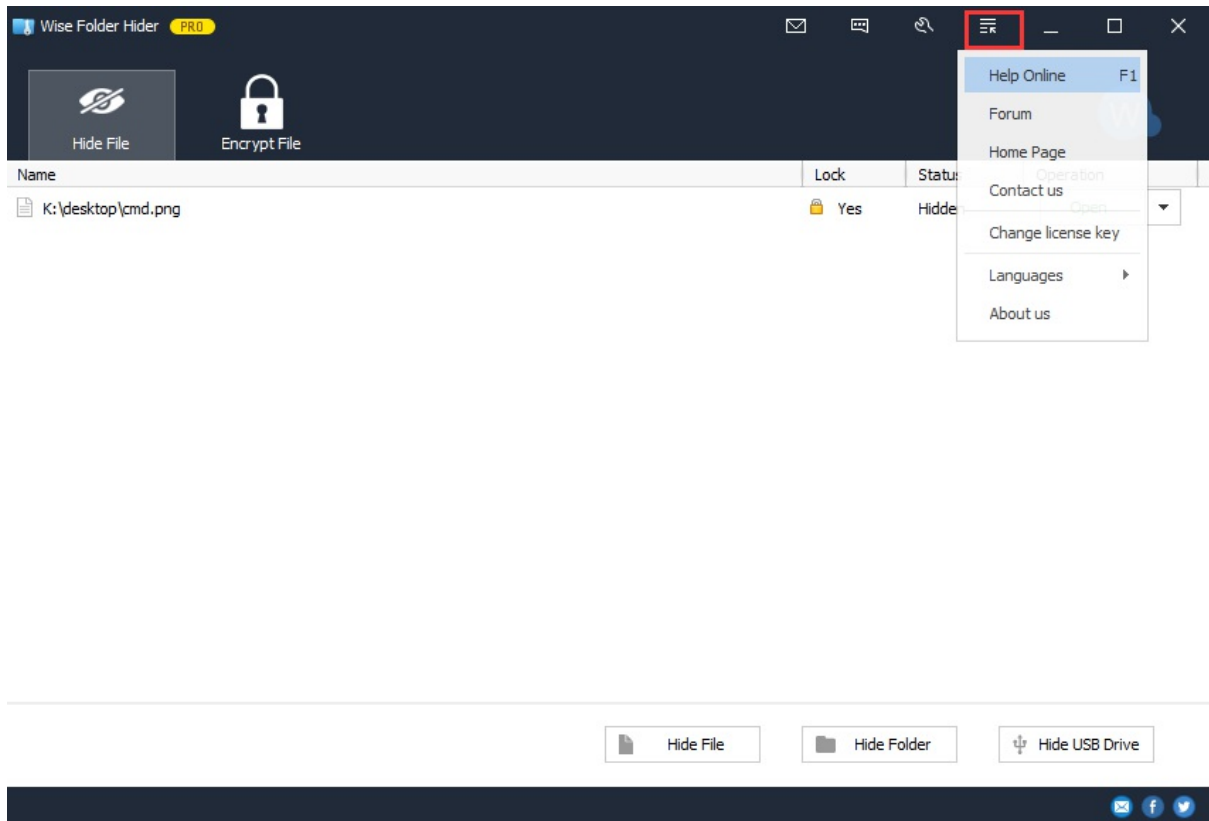
3.2 Settings

©2006-2020 WiseCleaner.com all right reserved, powered by GitbookEdited: 2020-06-02

Menu

1. Main Menu of Wise Folder Hider

Menu of Wise Folder Hider has many other features, such as **Help Online**, **Forum**, **Home Page**, **Contact us**, **Register**, **Change license key**, **Languages**, **About**



Online Documents: <https://www.wisecleaner.com/help/wisefolderhider/>

Official Homepage: <https://www.wisecleaner.com>

Official Forum: <http://forum.wisecleaner.com>

Contact Us: support@wisecleaner.com

Register / Change license key: The free version shows **Register** and the Pro version shows **Change license key**. Users can enter the registration information here to activate the Pro version.

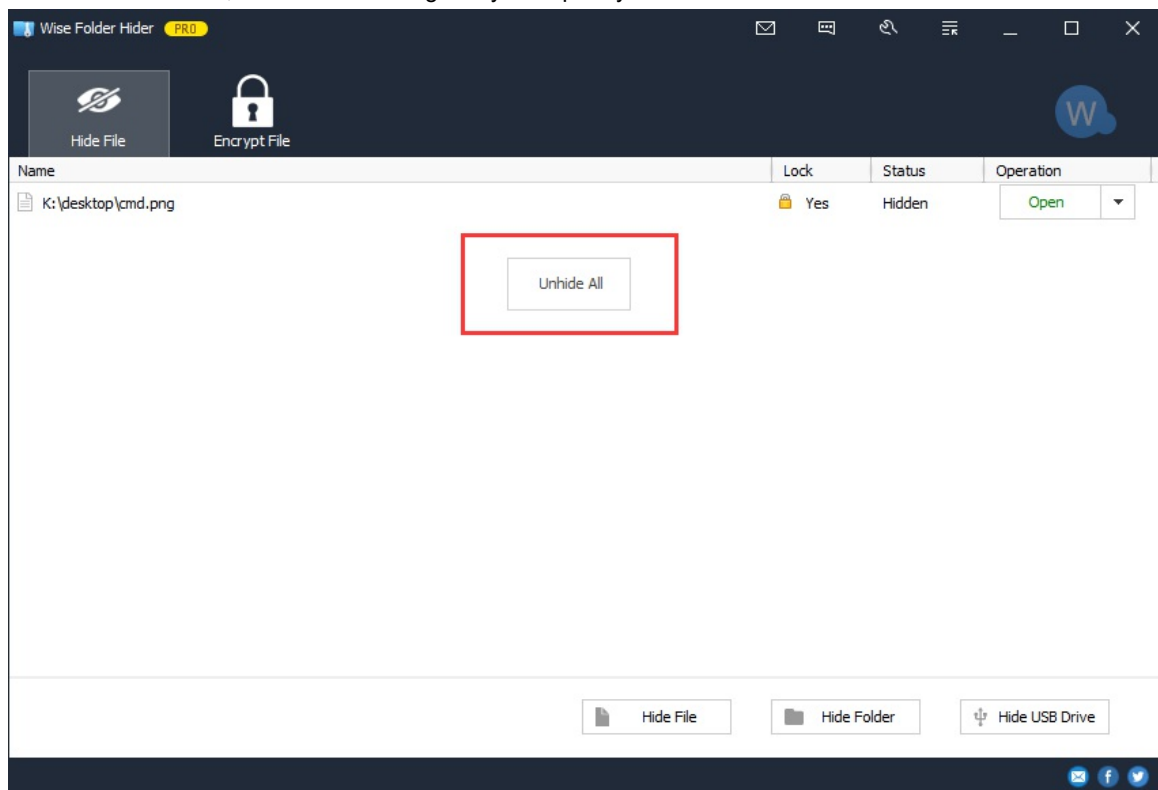
Language: Users can quickly change the display language of Wise Folder Hider through this. Currently, Wise Folder Hider supports 47 languages.

About Us: Display the version id.

2. Context Menu

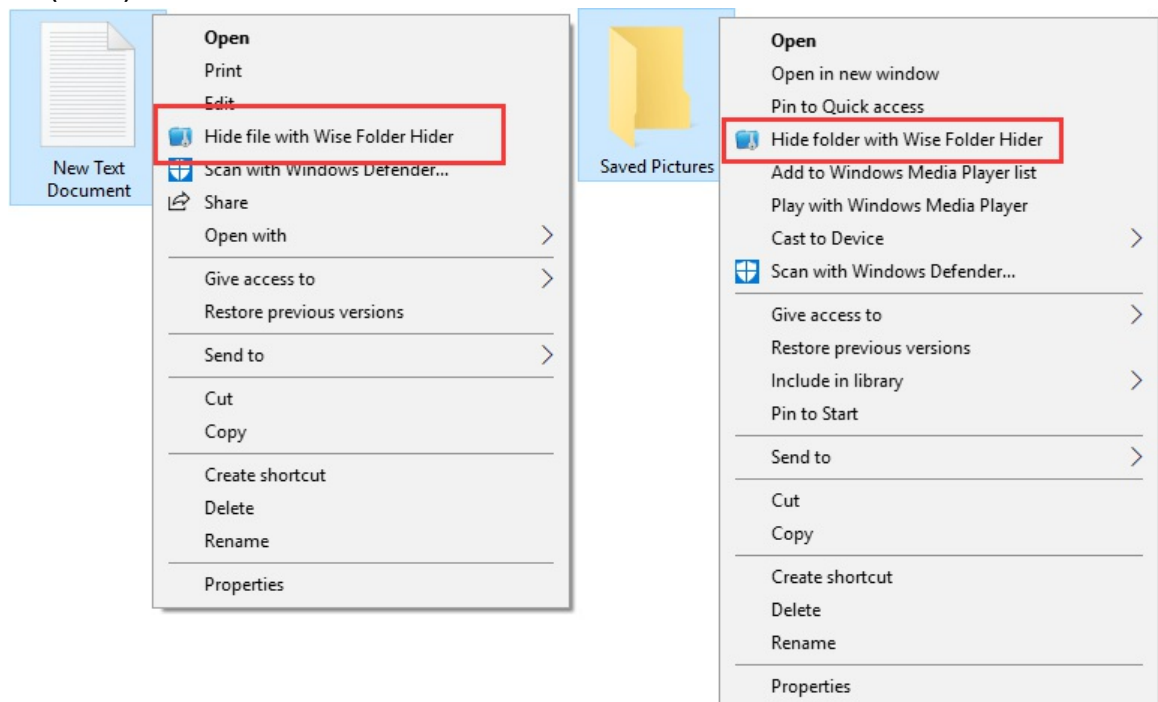
- **Unhide All**

In Wise Folder Hider, click the mouse right key can quickly unhide all files at once.



- **Hide file (folder) with Wise Folder Hider**

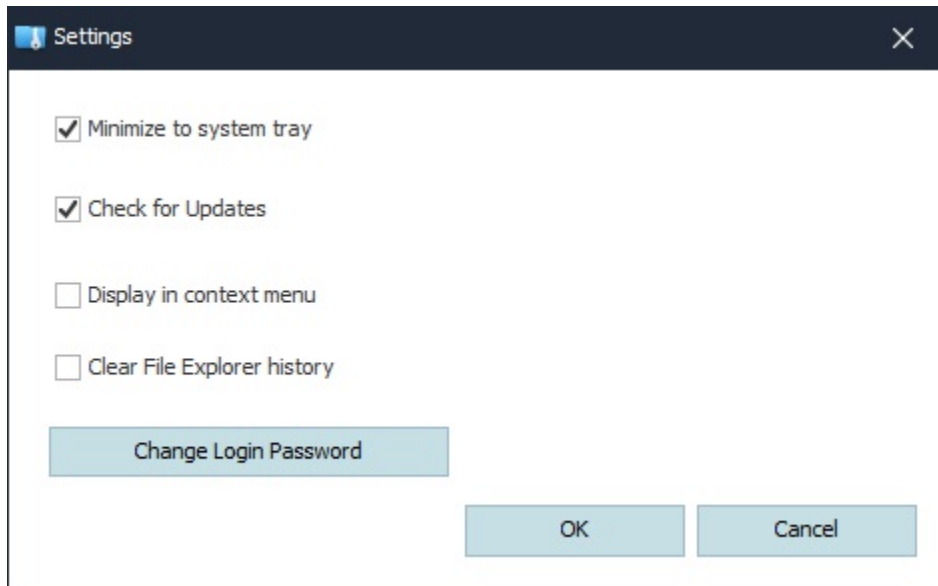
Wise Folder Hider embeds a shortcut in the system context menu to help users quickly hide files (folders) without starting Wise Folder Hider. The user only needs to right-click on the file (folder), and then select **Hide file (folder) with Wise Folder Hider**.



DO NOT use this function on application shortcuts, root directories, or system folders.

Settings

In the settings window of Wise Folder Hider, you can: **Minimize to the system tray**, **Check for Updates**, **Display in the context menu**, **Clear File Explorer history**, and **Change Login Password**.



- **Minimize to system tray**

The default state of this option is **checked**.

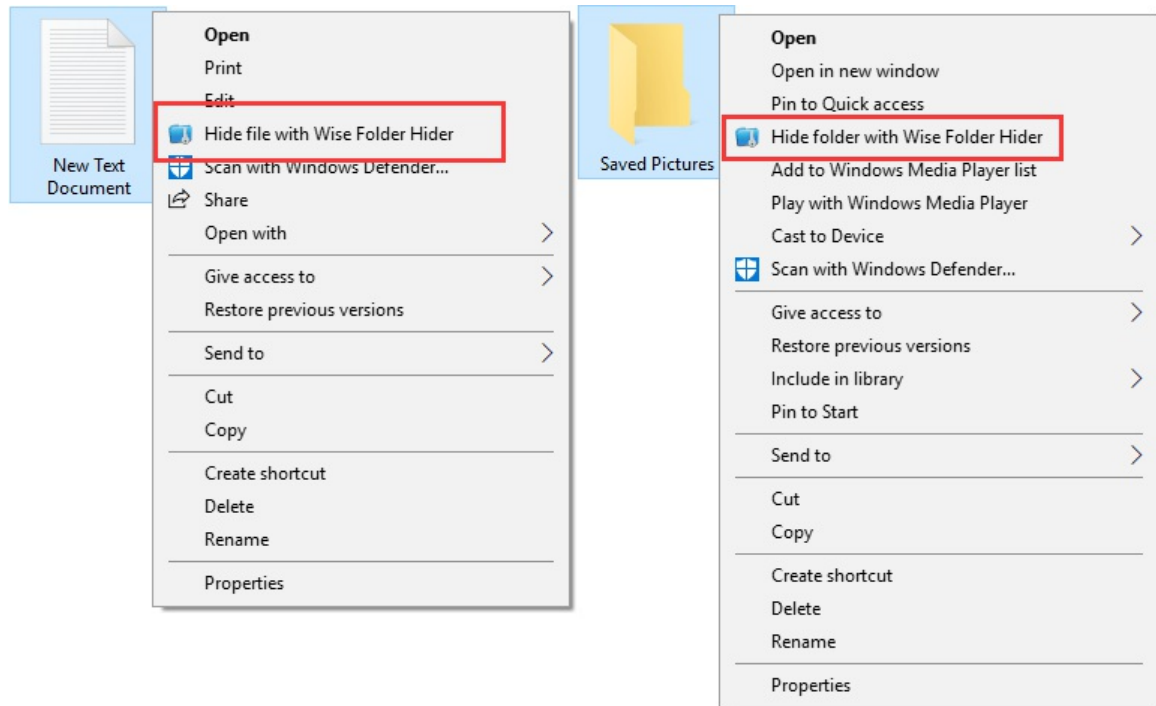
- If this option is **selected**, Wise Folder Hider will be minimized to the notification area of the taskbar when the program is minimized.
- If this option is **not selected**, Wise Folder Hider will minimize it to the taskbar.

- **Check for update**

After selecting this item, every time you run Wise Folder Hider, it will automatically detect whether there is a new version.

- **Display in context menu**

Hide or display **Hide file/folder with Wise Folder Hider** in the system context menu.

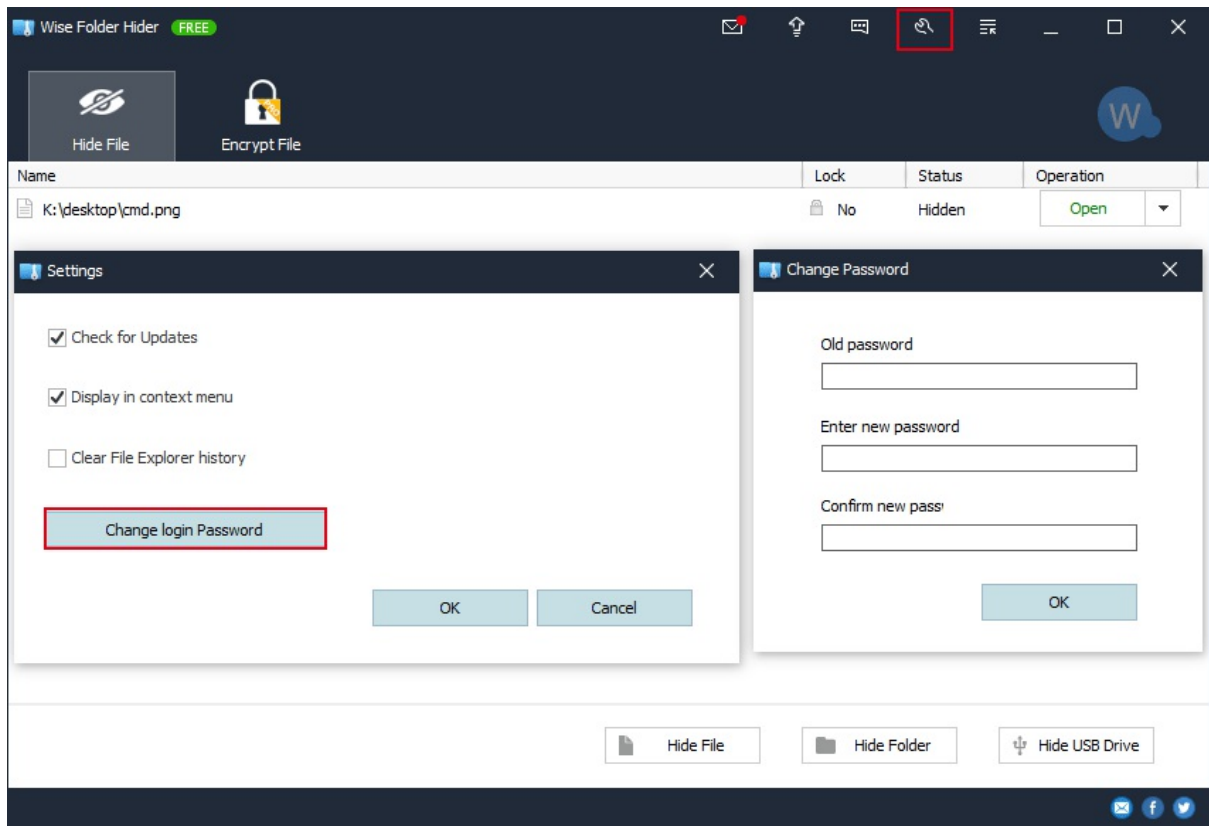


- **Clear File Explorer history**

If this option is checked, when you close Wise Folder Hider, it will automatically clear the history of the Explorer, including the recently opened documents. The default state of this option is **unchecked**.

Clearing the history of the Explorer does not distinguish whether it is a record of hidden files. If you need to keep the access records of other documents, please do not select this option.

- **Change login password**



©2006-2020 WiseCleaner.com all right reserved, powered by GitbookEdited: 2020-06-02

About WiseCleaner

[4.1 About Us](#)

[4.2 Awards](#)

[4.3 Help Us](#)

©2006-2020 WiseCleaner.com all right reserved, powered by GitbookEdited: 2020-06-02

About WiseCleaner

Who are we?

WiseCleaner started in February 2005 after many years of preparation. The company specializes in developing freeware and shareware for Windows, system tune-up utilities, and other software, such as our "Free YouTube Utility". Presently, many senior tech members work for the company. And we are setting up a special retail system and support network to provide the best possible service. The company is expanding into diverse forms of system utilities for our customers.

Contact Us

- For technical support, please contact support@wisecleaner.com
- Pre-sales questions and order problems, please contact sales@wisecleaner.com
- Any Media-related inquiries, please contact press@wisecleaner.com
- Any cooperation, please contact partner@wisecleaner.com

Official Websites

English: <https://www.wisecleaner.com>











中文(中国): <https://www.wisecleaner.com.cn>

Deutsch: <https://www.wisecleaner.eu>

日本語: <https://jp.wisecleaner.com>

©2006-2020 WiseCleaner.com all right reserved, powered by GitbookEdited: 2020-06-02

Awards of WiseCleaner

Learn more about [WiseCleaner awards](#).

©2006-2020 WiseCleaner.com all right reserved, powered by GitbookEdited: 2020-06-02

Help Us

Donation

Donating to us is the direct way to help us to develop and maintain Wisecleaner products. Please use the following "Donate" button to help us.



Localize Wisecleaner

Our software supports multiple languages, you can [read this page](#) to see which languages have been included in our software. If you can help us to translate the materials about our software to your mother tongue, you will get a free license key once your translation is adopted by our editor! For example, you will get a license key of Wise Care 365 after your translation to Wise Care 365 or translations to Wise Disk Cleaner and Wise Registry Cleaner being adopted.

Recommend Wisecleaner to Others

You are always appreciated to recommend our products to your families, friends, classmates or colleagues etc. You can introduce it on your blog, facebook, twitter, youtube and so on. Of course, you can follow us from below links:



©2006-2020 WiseCleaner.com all right reserved, powered by GitbookEdited: 2020-06-02