

Table of Contents

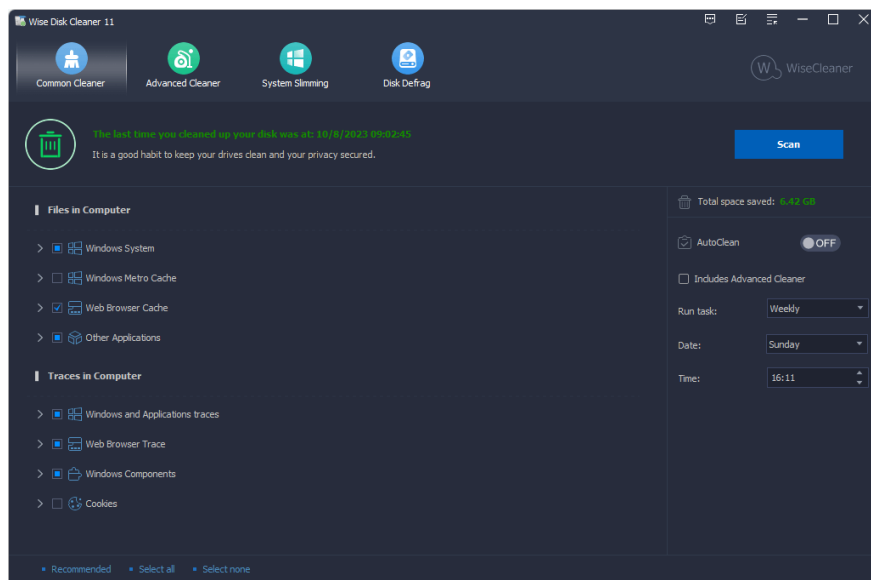
Welcome	1.1
1. Overview	1.2
1.1 Features	1.2.1
1.2 System Requirements	1.2.2
1.3 Install, Uninstall, Update	1.2.3
2. How To Use	1.3
2.1 Common Cleaner	1.3.1
2.2 Advanced Cleaner	1.3.2
2.3 Slimming System	1.3.3
2.4 Disk Defrag	1.3.4
2.5 AutoClean Task	1.3.5
2.6 Command Line	1.3.6
2.7 Custom Configuration	1.3.7
3. Menu & Settings	1.4
3.1 Menu	1.4.1
3.2 Settings	1.4.2
4. About WiesCleaner	1.5
4.1 About Us	1.5.1
4.2 Awards	1.5.2
4.3 Help Us	1.5.3

Welcome to use Wise Disk Cleaner

A hard disk is littered with junk files that you don't need, taking up precious hard disk space, and potentially slowing down your PC's performance. There are files of all kinds, such as temporary files that applications should delete when they're no longer needed, and various log files, index files, backup files, etc. You'd be amazed at how much space these junk files consume.

The Wise Disk Cleaner looks for all of them, then deletes what you tell it to. You may also have the program do the cleanup automatically, or you may do it manually. You'll be amazed at how much hard disk space this program can restore for you.

Even the least experienced users can easily remove junk files with Wise Disk Cleaner.



©2006-2023 WiseCleaner.com all right reserved, powered by GitbookEdited:
2023-10-17

Overview

[1.1 Features](#)

[1.2 System Requirements](#)

[1.3 Install, Uninstall, Update](#)

©2006-2023 WiseCleaner.com all right reserved, powered by GitbookEdited:
2023-10-13

Key Features

- **Free of Charge**

Wise Disk Cleaner is a real freeware; it is free to use, free to update and all users can enjoy our free technical support.

- **Fast Speed**

After re-construction, Wise Disk Cleaner incorporates a fast search algorithm, so now we can proudly say that our scanning speed is the fastest in the world!

- **Easy to Use**

Wise Disk Cleaner has always committed to improve its software functions to free up disk space, and now it's time to make its interface more attractive and more friendly to use, so the new version 9 is released.

- **Secure Deletion**

You could add exclusion list to Wise Disk Cleaner. And always we recommend basic clean operation for common users.

- **Powerful Functions**

Wise Disk Cleaner allow you to custom filetype/files to delete and folders to empty, even you can erase the deleted data to make it unrecoverable. What's more, it can help you slimming down your system to free up more disk space for your system drive.

©2006-2023 WiseCleaner.com all right reserved, powered by Gitbook
Edited: 2023-10-13

System Requirements

Wise Disk Cleaner will run on any PC running Microsoft Windows XP or later. If you're running one of the following operating systems, it's OK to run Wise Disk Cleaner:

1. Windows 7 (All Windows Editions, including both 32-bit and 64-bit)
2. Windows 8 (All Windows Editions, including both 32-bit and 64-bit)
3. Windows 10 (All Windows Editions, including both 32-bit and 64-bit)
4. Windows 11 (All Windows Editions, including both 32-bit and 64-bit)

Since Wise Disk Cleaner is a small and quick program, it takes less memory and needs fewer hard drive requirements.

Wise Disk Cleaner does NOT support installation in Windows Vista and Windows XP, but you can still run the [portable version of Wise Disk Cleaner](<https://www.wisecleaner.com/download.html>) in Windows Vista and Windows XP.

©2006-2023 WiseCleaner.com all right reserved, powered by Gitbook
Edited: 2023-10-13

Download, Install, Uninstall and Upgrade

You can refer to the following instructions about [how to download Wise Disk Cleaner](#), [how to install Wise Disk Cleaner](#), [how to uninstall Wise Disk Cleaner](#), [how to update Wise Disk Cleaner](#).

1. Download

You are always welcome to download Wise Disk Cleaner from our official site:

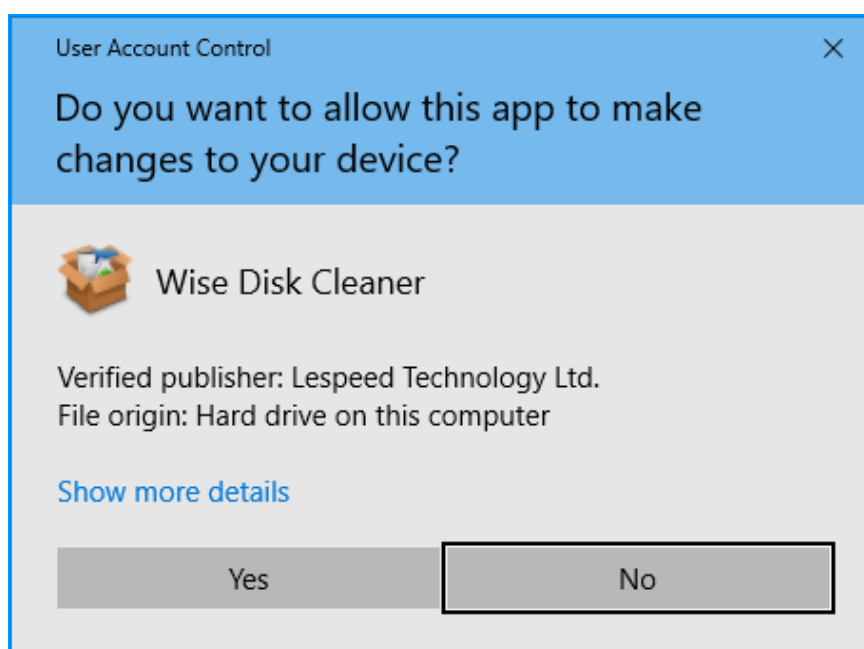
Homepage: <https://www.wisecleaner.com>

Wise Disk Cleaner: <https://www.wisecleaner.com/wise-disk-cleaner.html>

Download Center: <https://www.wisecleaner.com/download.html>

2. Install

After Wise Disk Cleaner download finishes, please find and double-click the setup file, and then click **Yes** after the following dialog box appears.



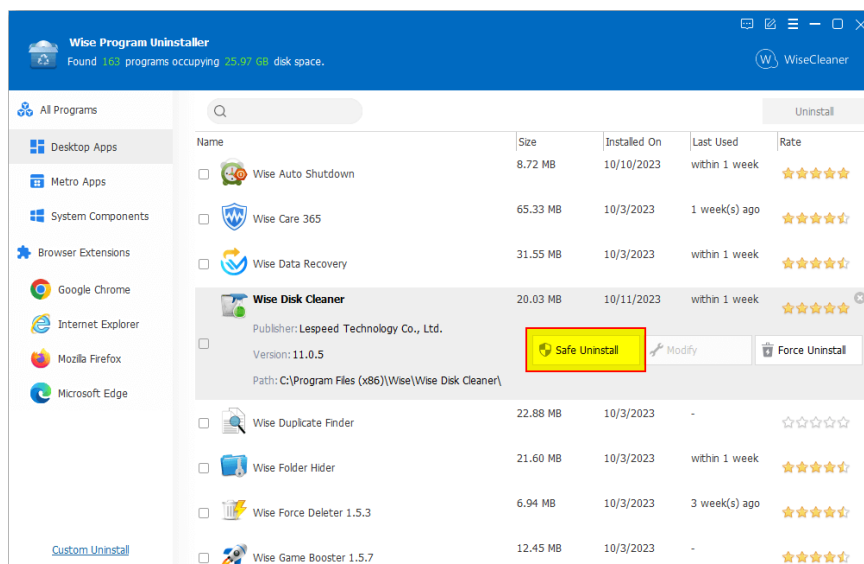
Then the installer will start automatically and will guide you through the rest of the installation process.

3. Remove/Uninstall

There are 3 methods to uninstall a program. Please ensure that the application has been closed.

Method 1: Use Wise Program Uninstaller

If you have installed [Wise Program Uninstaller](#), just open it, scroll and find the program you want to uninstall, select it, and then click [**Safe Uninstall**]. This is the simplest way to uninstall a program and no leftovers.



Method 2: Use the application self-uninstall program

Please open Wise Disk Cleaner folder, find and run  **unins000.exe**

- If you are running a **32bit** system, the path is: **C:\Program Files\Wise\Wise Disk Cleaner**
- If you are running a **64bit** system, the path is: **C:\Program Files (x86)\Wise\Wise Disk Cleaner**

Method 3: Use system Control Panel

- If you are running a XP system, please click **Start – Control Panel – Add or Remove Programs**, scroll down and find the program you want to uninstall, then click **Remove**
- If you are running a Vista/Win7 system, please click **Start – Control Panel – Programs – Uninstall a Program**, scroll down and find the program you want to uninstall, then click **Uninstall**
- If you are running a Win 8 system, please click **Settings – Control Panel - Programs – Uninstall a Program**, scroll down and find the program you want to uninstall, then click **Uninstall**
- If you are running a Win 10 system, please click **Start – Settings – System – Apps & Features**, scroll down and find the program you want to uninstall, then click **Uninstall**

4. Upgrade

Please run the application, click **Menu - Check for Updates**.

Also, you can download the latest version from:

<https://www.wisecleaner.com/download.html>. Please ensure Wise Disk Cleaner has been closed, and then install the latest version.

The minor upgrade can directly install the new version \ (for example: 1.0-1.x\). The major upgrade needs to uninstall the old version, and then install the new version \ (for example: 1.x-2.x\).

©2006-2023 WiseCleaner.com all right reserved, powered by GitbookEdited:

2023-10-17

How to Use Wise Disk Cleaner

[2.1 Common Cleaner](#)

[2.2 Advanced Cleaner](#)

[2.3 Slimming System](#)

[2.4 Disk Defrag](#)

[2.5 AutoClean Task](#)

[2.6 Command Line](#)

[2.7 Custom Configuration](#)

©2006-2023 WiseCleaner.com all right reserved , powered by GitbookEdited:
2023-10-16

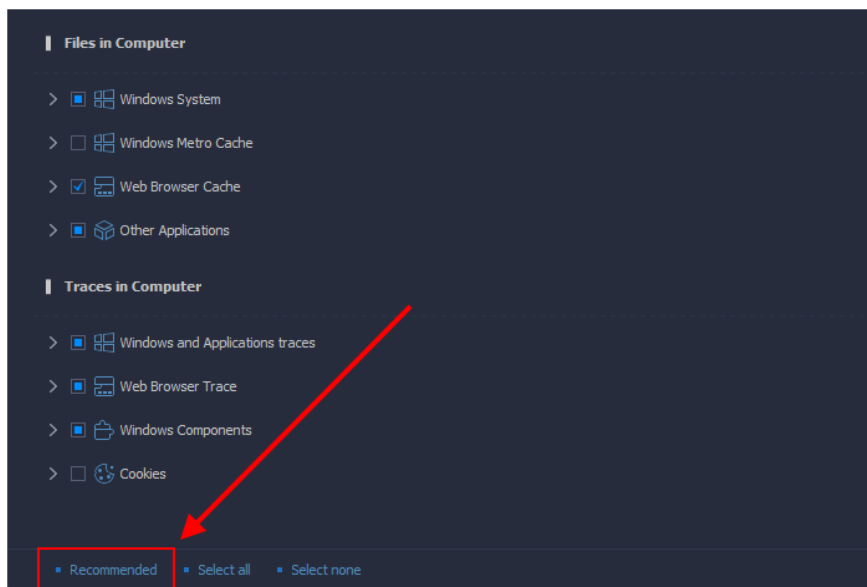
Common Cleaner

It is the main function of Wise Disk Cleaner, which can clean up useless files in the system drive, such as, log files, thumbnail cache files, Windows update files, browser cache files, browser history, cookies, browser saved passwords, temporary files created by various third-party applications (Adobe, Office, etc.), etc.

1. Before using the Common Cleaner to scan the system, please close the running browser first. 2. The files deleted by Common Cleaner cannot be recovered.

1. Select items that need to be scanned

You can left-click to select the items that need to be scanned. It is recommended to use the **【Recommended】** settings.



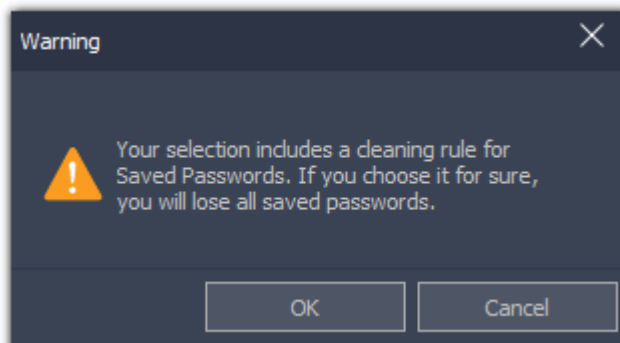
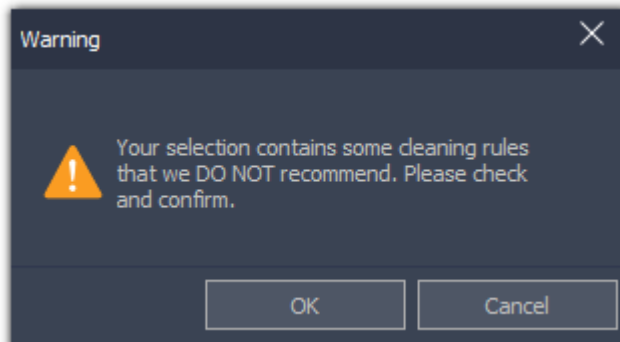
- ☒ , it means that **all content** under the item are selected.
- ☐ , it means that **part of the content** under the item are selected. Before changing it to all selected, please expand to see if the content contained in this item needs to be cleaned up.

It is strongly NOT recommended to clean up: Browsers Saved Passwords, and Cookies.

When you select all items under a node, or use the **【Select all】** function, you will receive a prompt like below, please be sure to expand this node and check whether all the items you want to clean up.

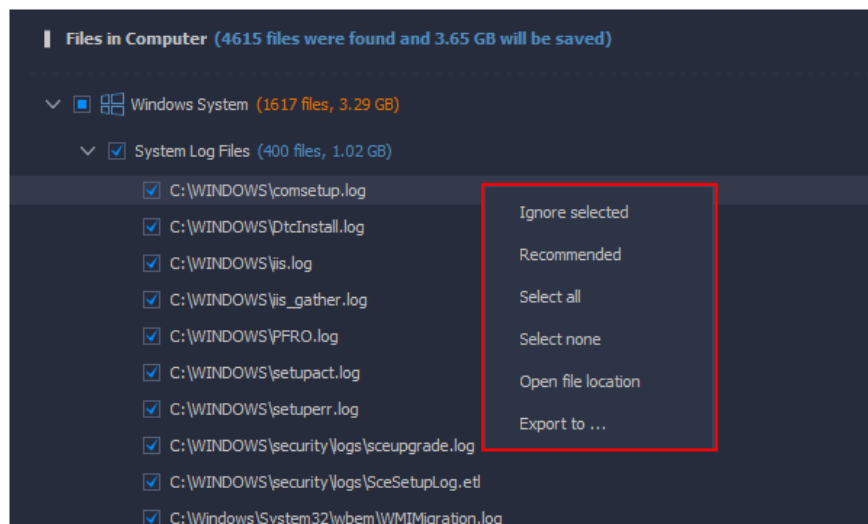
Once the listed files and browser saved passwords are cleared, you will not be able to recover them.

- Your selection contains some cleaning rules that we DO NOT recommend.
- Your selection includes a cleaning rule for Saved Passwords.



2. Select items that need to be deleted

After the scan is complete, you can left-click the items to expand and view the details. Right-click on an item, you can call out the context menu, and you will see 6 options, **Ignore selected**, **Recommended**, **Select all**, **Select none**, **Open file location**, and **Export to**.



- **Ignore selected**

Add this file to the Exclusion list, then Wise Disk Cleaner will neither scan nor clean it again until you move it from Exclusion. You can view the content of exclusion in [Menu -> Settings -> Exclusion](#).

- **Recommend**
Select only the items we recommend cleaning.
- **Select all**
Select all items.
- **Select none**
No items are selected.
- **Open file location**
Open the location of the selected file.
- **Export to ...**
Export and save the scan results as a text file.

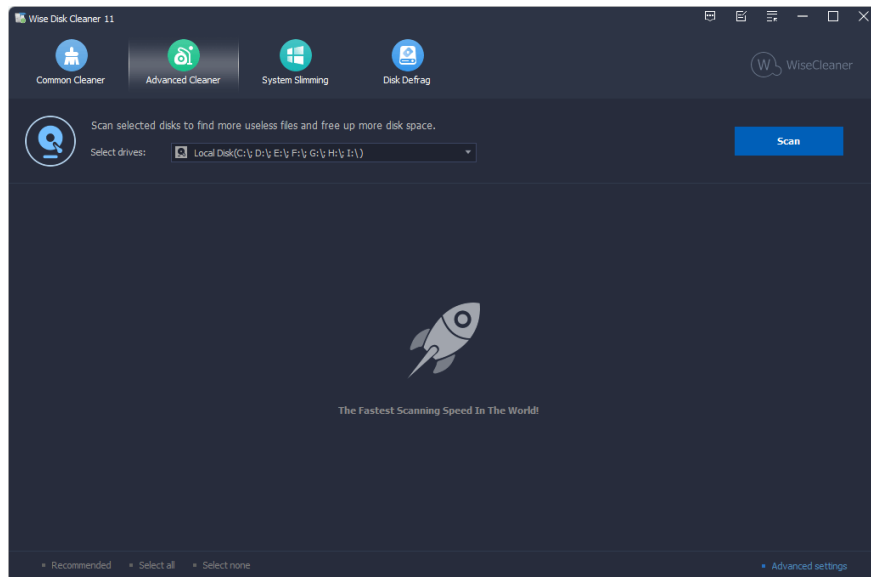
3. Recommended, Select All, Select None

There are 3 additional buttons at the bottom of the window, **Recommended**, **Select All**, **Select None**. These three buttons are only effective after the scan is completed. It cannot be clicked to use before starting the scan. Their specific function is the same as the **Recommended**, **Select All**, **Select None** in the right-click menu.

©2006-2023 WiseCleaner.com all right reserved, powered by GitbookEdited:
2023-10-17

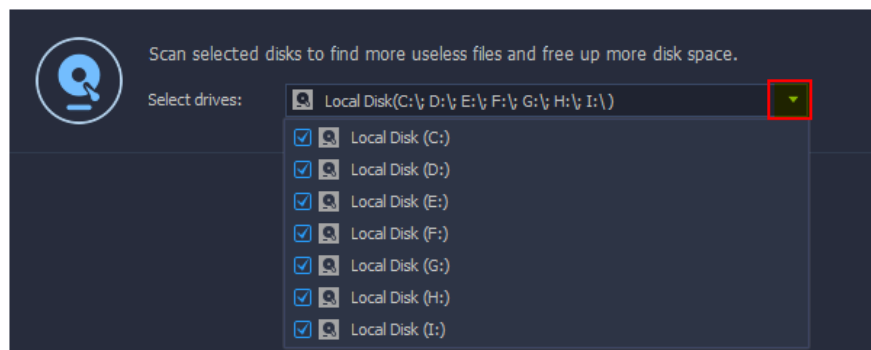
Advanced Cleaner

Advanced Cleaner is used to clear specific types of files in the local drives, it also can empty the specified folders.



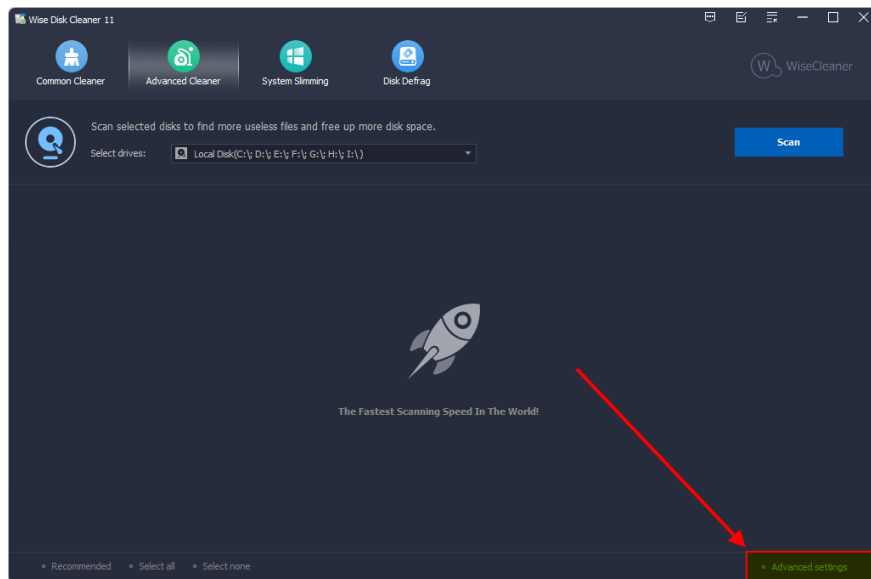
1. Select the locations that need to be scanned

To the right of the scan location, click the down arrow to expand the list of drives and select the drives that need to be scanned. All available drives are selected by default.

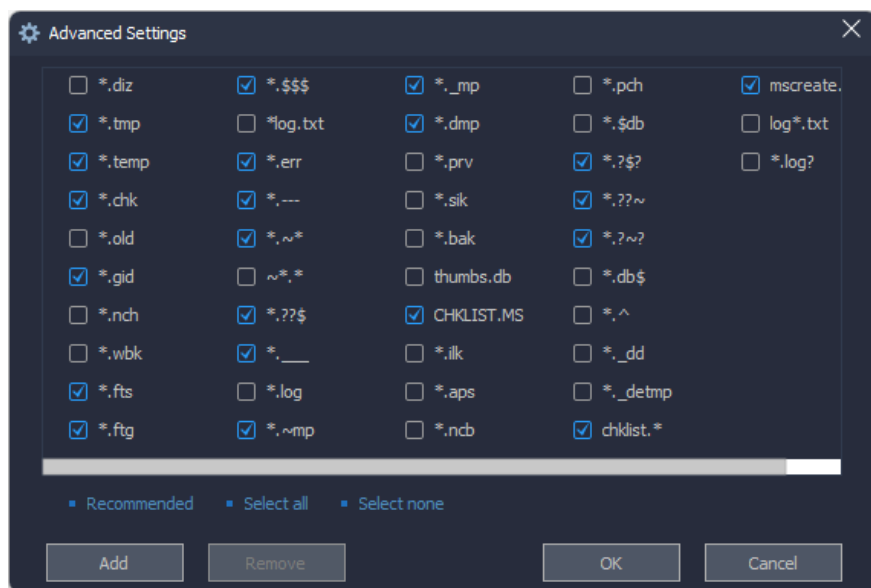


2. Select the file types that need to be scanned

You can click the **Advanced Settings** button in the lower right corner of the window to open the settings window, and then select the file type to be cleared.



Wise Disk Cleaner finds and clears the default 22 types of files in the specified drive: *.tmp, *.temp, *.chk, *.gid, *.dmp, and so on, total 22 types of files. And 21 other file types that can be selected for cleaning.



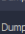
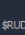
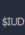
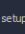
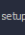
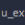

At the same time, you can also click the **【Add】** button to add other file types that need to be cleaned up.




Before adding a file type that needs to be deleted, please double-check whether the file of this type can be safely deleted. After the file is deleted, it cannot be recovered. For ordinary users, please do not use the Add function! It is recommended to use the recommended settings!

3. Select the files that need to be deleted

After the scan is complete, the scan results are sorted by location by default. You can also click the title bar to reorder, for example, click the **Name**, the list will be sorted by file name; click the **Size**, the list will be sorted by file size. The list also

will be sorted by **Path**, file **Accessed** time, and **Type**.

Name	Size	Path	Accessed	Type
<input checked="" type="checkbox"/>  DumpStack.log.tmp	12.0 KB		10/13/2023 08:19:05	Temporary files
<input type="checkbox"/>  DumpStack.log	12.0 KB		8/5/2023 17:06:04	Log files
<input checked="" type="checkbox"/>  \$RUD9CVH.dmp	1.2 MB	\$Recycle.Bin\S-1-5-21-159582370...	10/8/2023 17:03:04	Temporary files
<input checked="" type="checkbox"/>  \$RUD9CVH.dmp	116 Bytes	\$Recycle.Bin\S-1-5-21-159582370...	10/8/2023 17:03:04	Temporary files
<input type="checkbox"/>  setuperr.log	2.2 KB	\$Windows.~\WS\Sources\Panther\	2/8/2023 14:06:53	Log files
<input type="checkbox"/>  setupact.log	110.9 KB	\$Windows.~\WS\Sources\Panther\	2/8/2023 14:07:01	Log files
<input type="checkbox"/>  u_ex220803.log	2.5 KB	C:\inetpub\logs\LogFiles\W3SVC1\	8/3/2022 18:21:24	Log files

- : It means that this file can be safely deleted.
- : It means that Wise Disk Cleaner cannot judge whether this file can be safely deleted, It is up to the user to decide whether to delete it.
- : This icon indicates that this file is a file type added by the user in the **Advanced Settings** or a file in a custom folder added in the **Menu -> Settings -> Custom**.

Right-click on an item, you can call out the context menu.

- **Ignore selected**
Add this file to the Exclusion list, Wise Disk Cleaner will neither scan nor clean it again. You can view the content of exclusion in **Menu -> Settings -> Exclusion**.
- **Select all**
Select all files.
- **Select none**
Do not select any files.
- **Invert selection**
If you just don't want to delete a few files, you can select these files first, and then use the Invert Selection function, you can quickly select other files which need to be deleted.
- **Open file location**
Open the location of the selected file.
- **Export to ...**
Export and save the scan results as a text file.

4. Custom Folder

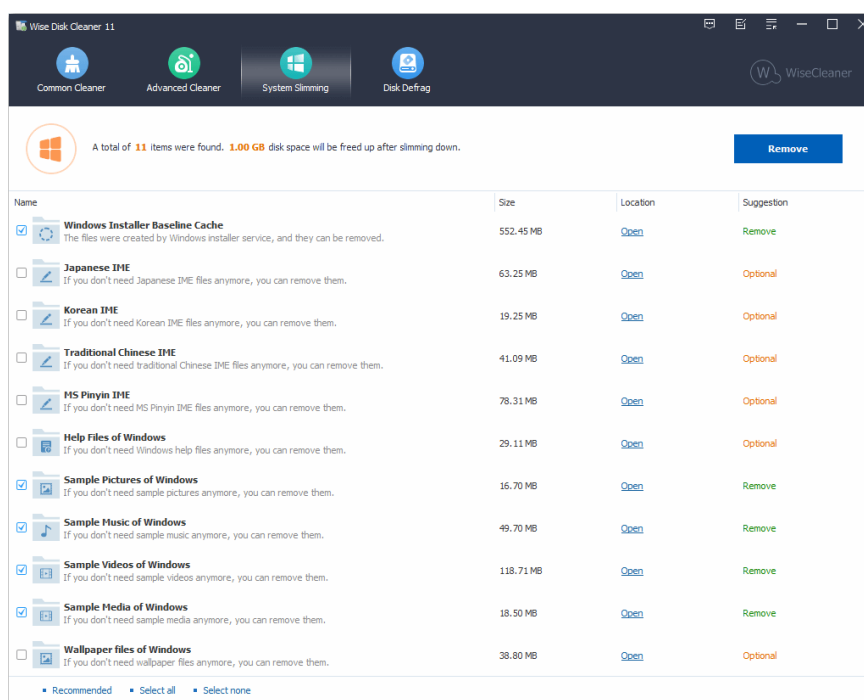
Advanced Cleaner also supports emptying all files in a specified folder. You can add the folder which needs to be emptied in **Menu -> Settings -> Custom**.

Note: This is to EMPTY the folder, delete all files in the folder. Advanced Cleaner will only empty all the contents of the folder!!!

Slimming System

Some unnecessary files of Windows on the system drive can be removed to free up system drive space. They are **Downloaded installation files, Installer baseline cache, IME, Help files, Wallpaper files, Sample Music/Pictures/Videos/Media of Windows**.

If the Help Files, Sample Files, and IME Files are removed, incomplete system files are reported when you run the 【SFC /scannow】 command to check the system.



System Slimming will automatically create a restore point for you but only on your first use of it.

For safety's sake, we suggest you read the following help file carefully before you slim down your system.

- **Windows downloaded installation files**
It is safe to delete these files after you succeed in installing Windows update patches.
- **Windows installer baseline cache** The files were created by Windows installer service, and they can be removed.
- **IME**
IME (Input Method Editor) is a program from Windows that allows you to enter Asian text in programs by converting your keystrokes into Asian characters.
For example, if you eliminate Japanese IME, you will not be able to type out Japanese character.
If you think you will never use these Asian IMEs, it's safe to clean them off.

- **Wallpaper** Wallpaper is an images used as a background or desktop on a computer screen. However, currently most users use their customized pictures as their desktops or backgrounds.
It's safe to delete the wallpaper files of Windows if you are one of them. But it's dangerous if you use Windows default wallpaper as your desktop.
- **Sample music/pictures/videos/media**
It's safe to delete them if they are not occupied by other programs.

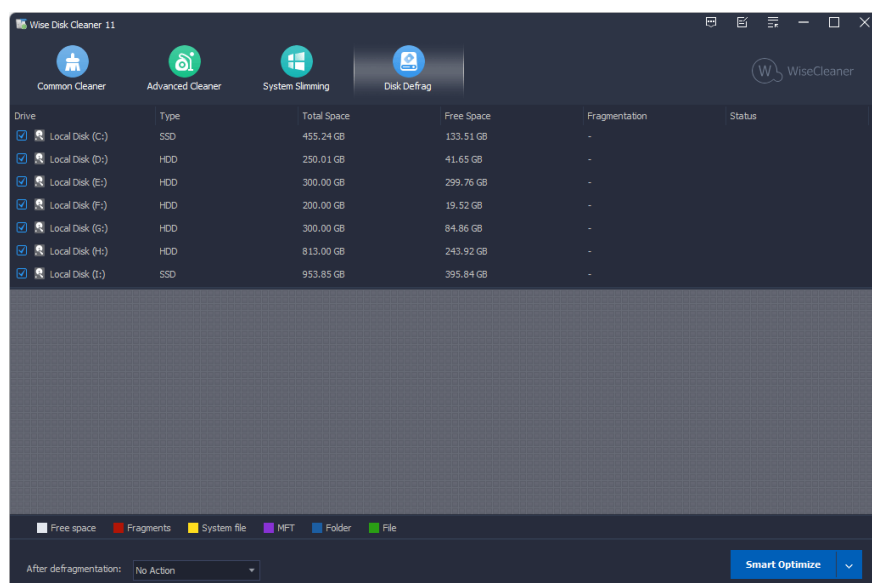
©2006-2023 WiseCleaner.com all right reserved, powered by GitbookEdited:
2023-10-17

Disk Defrag

Also called disk defragmentation. Wise Disk Cleaner can defragment all partitions to make the file storage more compact, thereby improving system performance and running speed.

Starting from [version 10.8.2](#), Wise Disk Cleaner detects the disk type and selects the most appropriate method to optimize, defragment and TRIM the selected disk. This function is called **【Smart Optimize】**.

Before using disk defragmentation, please close all currently running programs to help improve the effect of defragmentation and reduce the time required for defragmentation.

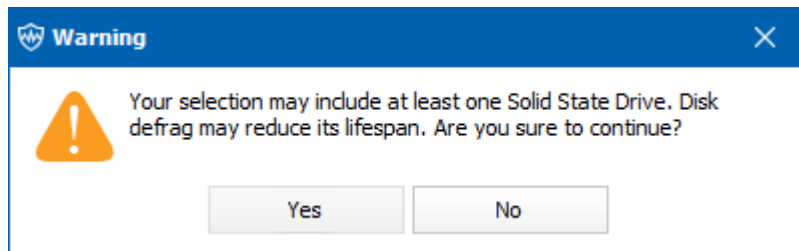


1. Select the partition that needs to be defragged

When running the defragmentation function for the first time, all partitions are selected by default. If Wise Disk Cleaner detects an SSD (Solid State Disk), all partitions of this SSD will be unchecked.

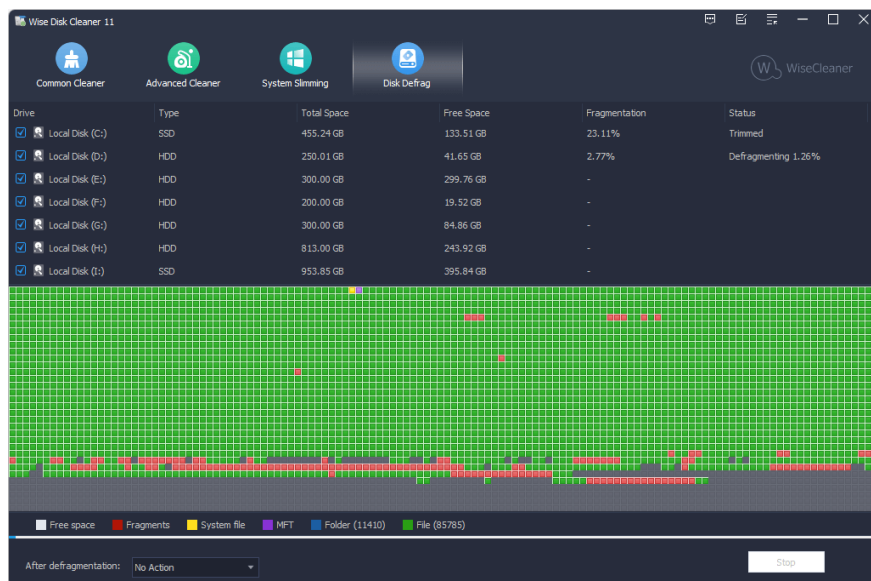
If an SSD is selected, you will receive a warning message when you click the **【Defragment】** in the drop-down menu.

It is not recommended to defragment and optimize the SSD.
Defragmentation and disk optimization will reduce the life of the SSD.

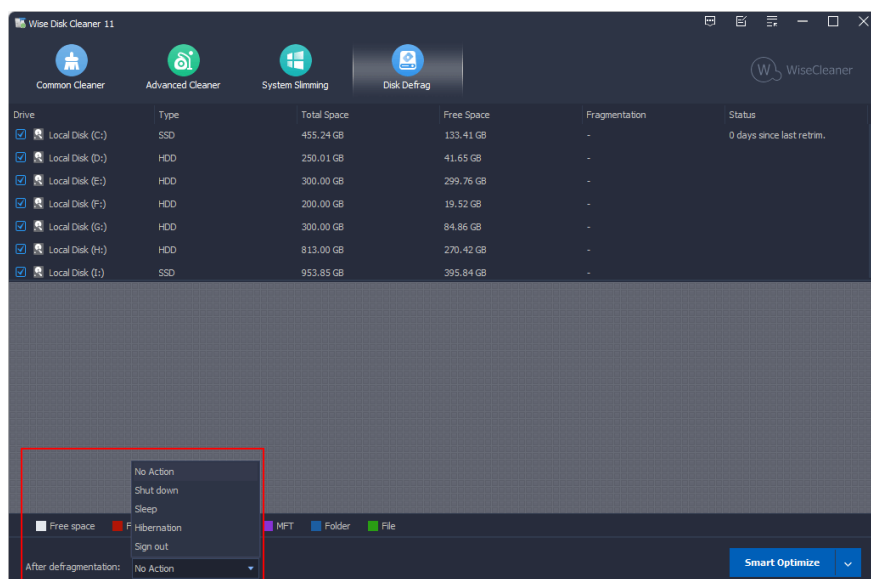


2. Start defragmentation

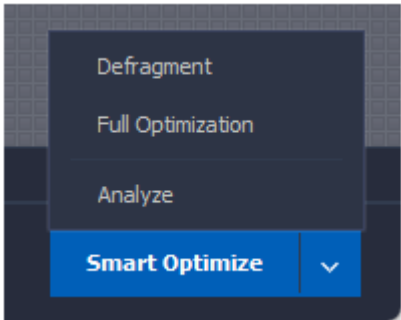
After clicking the **Smart Optimize** button, Wise Disk Cleaner will analyze the selected disk first and then start defragging or trimming.



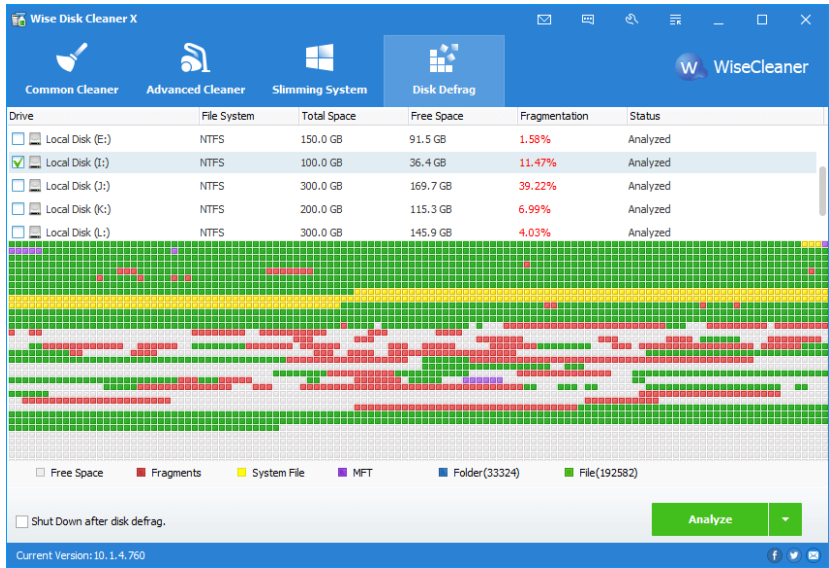
Usually, the defragmentation time will be longer, you can check the option **After defragmentation** in the lower-left corner to create an automatic task, **Shut down**, **Sleep**, **Hibernate**, **Sign out**.



The blue button has 4 operation options (3 are in the drop-down menu): **Smart Optimize, Analyze, Defragment, Quick Optimization, Full Optimization.**

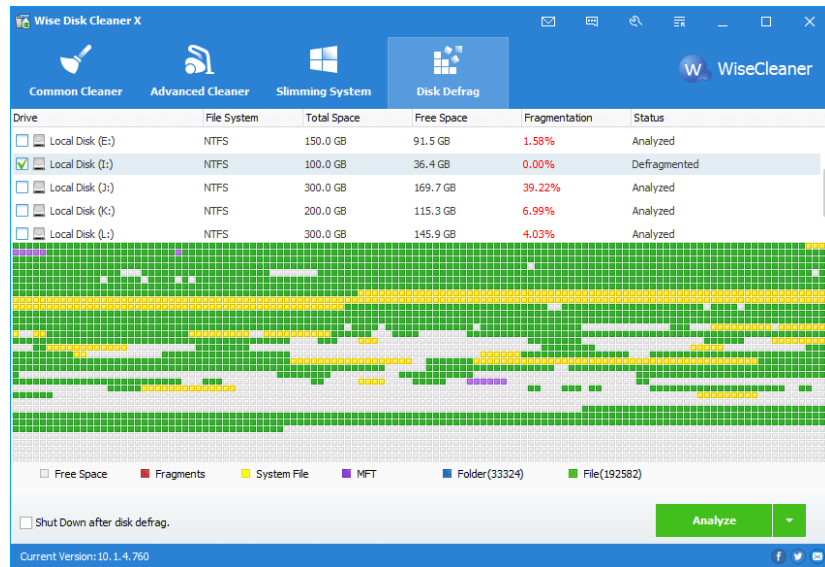


- **Smart Optimize**
It will analyze and select the most suitable method to defragment, optimize, or TRIM disk.
- **Analyze**
Only analyze and display disk fragmentation status.



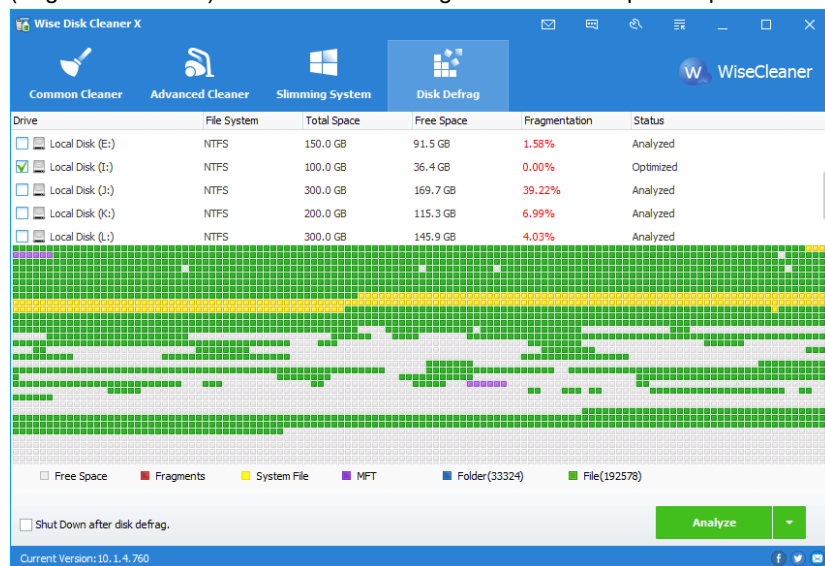
- **Defragment**
This operation will concatenate fragmented files into one chunk so as to accelerate the file-reading speed and free additional available space though

a little. (Files that can't be moved or are locked will be skipped.)



- **Full Optimization**

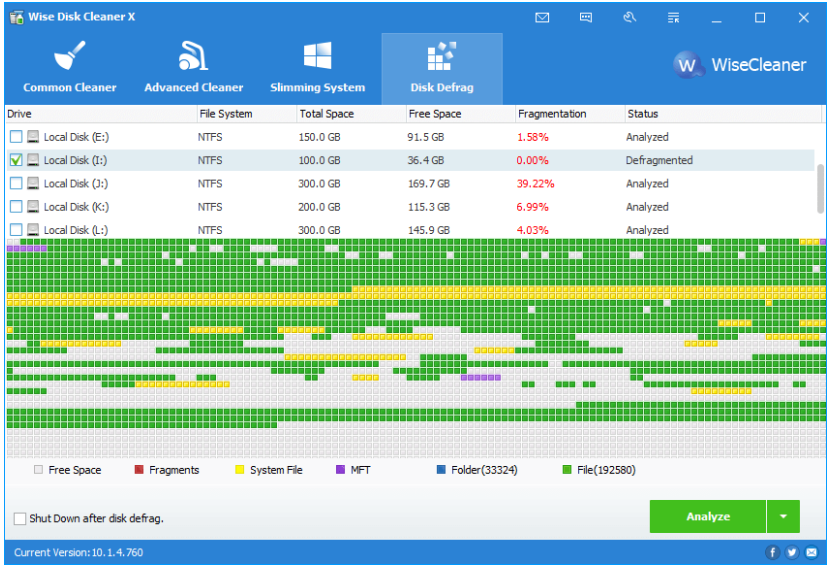
This operation will defragment fragmented files and rearrange all files (fragmented or not) to concatenate storage areas to free up disk space.



- **Quick Optimization***

This operation will defragment fragmented files and rearrange fragmented files to concatenate storage areas to free up disk space. (This option has

been removed as of version 10.8.2.)



©2006-2023 WiseCleaner.com all right reserved, powered by GitbookEdited:
2023-10-17

AutoClean

Also called Scheduled Task in previous versions. Based on custom settings, it automatically cleans useless or junk files.

Please select the task type in **【Run Task】** , then turn the button **ON** to activate scheduler. If you choose On Idle, it will start to scan and clean while the CPU is free.

If the option **【Includes Advanced Cleaner】** is selected, the AutoClean task will run both Common Cleaner and Advanced Cleaner.

[The AutoClean task will use you last cleaning settings.](#)

☒ AutoClean ☐ OFF

☐ Includes Advanced Cleaner

Run task:

Time:

☒ AutoClean ☐ OFF

☐ Includes Advanced Cleaner

Run task:

Date:

Time:

☒ AutoClean ☐ OFF

☐ Includes Advanced Cleaner

Run task:

Date:

Time:

☒ AutoClean ☐ OFF

☐ Includes Advanced Cleaner

Run task:

☒ AutoClean ☐ OFF

☐ Includes Advanced Cleaner

Run task:

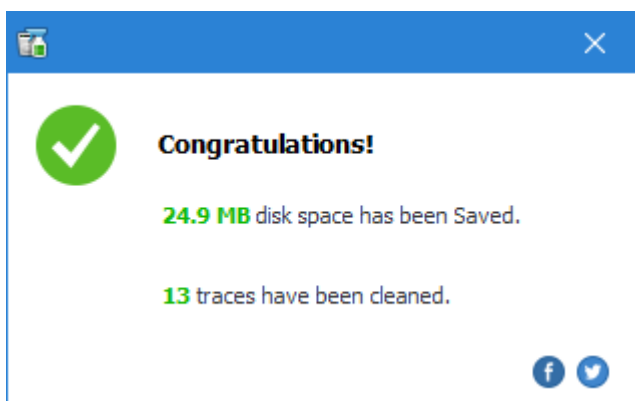
©2006-2023 WiseCleaner.com all right reserved, powered by GitbookEdited:
2023-10-17

Command Line (Auto Run)

If you're familiar with the command line, you can run the following commands to clean disk with Wise Disk Cleaner.

Parameter	Explanation	Sample
WiseDiskCleaner.exe -a	Wise Disk Cleaner runs automatically and silently, using the current set of saved settings to clean junk files(only common cleaner) from your PC. Wise Disk Cleaner then exits.	"C:\Program files\Wise Disk Cleaner\WiseDiskCleaner.exe" -a
WiseDiskCleaner.exe -a -adv	Wise Disk Cleaner runs automatically and silently, using the current set of saved settings to clean junk files(common cleaner and advanced cleaner) from your PC. Wise Disk Cleaner then exits.	"C:\Program files\Wise Disk Cleaner\WiseDiskCleaner.exe" -a -adv

Use the command to clean the disk, you will not see the main window of Wise Disk Cleaner, only a notification window shows the cleaning results.



These are advanced techniques for advanced users only. [【Command-Line】](#) and [【Clean with 1 click】](#) clean the items you selected in the last cleaning.

©2006-2023 WiseCleaner.com all right reserved, powered by GitbookEdited:
2023-10-17

Wise Disk Cleaner Custom Configuration Guide

Custom configuration file is only available in versions 8, 9 and 10. Wise Disk Cleaner version 11 does not support it.

Foreword:

The configuration file "UserCustom.ini" must be saved in the installation directory, then Wise Disk Cleaner can automatically adopts the configuration file.

I, About the configuration file:

[Root7]

Name=

Type=

TranName=

DefaultName=

Image=

[Name0]

TranName=

DefaultName=

Exists=

Recommended=

Item0=| |

II, Details of Parameter

The section below from 1 to 6 are mandatory.

1, [Root7]

The user must start from the 7th node and go on with 8, 9, etc. The first 6 are already in use.

2, Name=Name of the node.

This is used to define following cleaning rules. It will not be displayed on WDC interface.

3, Type=Type of the node

Type can be defined as Trash or Trace.

- **Trash:** Trash accumulates the size of the files cleaned. If you define as Trash, this cleaning rules will be displayed in "**Useless Files In Computer**".
- **Trace:** Trace counts the quantity of items cleaned. If you define as Trace, this cleaning rules will be displayed in "**Traces In Computer**".

4, TranName=Translator name of the node

5, DefaultName=Default name of the node

A show name of the node. It will be displayed on WDC interface.

6, Image=-1

The icon of this cleaning rule.



The section below from 7 to 11 are to customize the cleaning rules.

Notice: the content in "()" is optional, while the content in "" is required and mandatory.

7, [Name0]

The name of one cleaning rule, serial number starts from 0 and has no upper limit.

8, (TranName=)Translator name of the cleaning rule

9, Default name of the cleaning rule

A show name of this cleaning rule. It will be displayed on WDC interface.

10, Exists= Location of the file, or the value of the registry key

- It is used to determine whether the program needs cleaning is installed or not.
- If this item exists, then it will first determine whether the program needs cleaning is installed.
- If it's not installed, then the rules will not be listed.
- If no need to determine this, this item is not needed to exist. Please notice that by "not exist" it means the whole item including the content left of the "=".

E.g.

```
%programfiles%\Internet Explorer\iexplore.exe      //To determine of files
HKEY_CURRENT_USER\Software\Opera Software(reg)      //To determine the value of the
```

11, Recommended=1

- 1: Checked by default
- 0: Not checked by default

The section below is to customize the items needed cleaning.

12, Item0=||

It is to customize the items needed cleaning.

Please notice that the serial number must also start from 0 and marked as item0, item1...

12.1 Types

- File = files
- RegKey = registry key
- RegValue = registry value
- SQL = sqlite database
- Lnk = shortcut

12.2 Scanning List

This section varies in accordance with the Types section.

• File

Write in the paths needed scanning.

e.g.

```
%Appdata%\Microsoft\Windows\Cookies
```

Use semicolons to separate different paths, within which the environment variables supported can be included.

• RegKey

Write in the registry path needed scanning. Semicolons are used to separate the paths.

e.g.

```
HKEY_CURRENT_USER\Software\Microsoft\Internet Explorer\TabbedBrowsing\NewTabPage
```

• RegValue

Write in the registry path needed scanning. Semicolons are used to separate the paths.

- **SQL**

Write in the complete path of the database file.

e.g.

```
%LOCALAPPDATA%\Google\Chrome\User Data\Default\Cookies //Cookies here is a file with
```

- **Lnk**

Write in the paths needed scanning.

12.3 Filters and Options

This section also varies in accordance with the Types section.

- **File**

- Filter= Filter criteria,

Wildcard is supported here. (e.g. *.dat).

Semicolon is used to separate multiple criteria here. (e.g.

Filter=*.txt;*.dat).

This criterion is mandatory.

- FindInSubFolder=1 or 0

1: to search in subdirectory;

0: not to search in subdirectory.

- RemoveSubFolder=1 or 0

1: to delete subdirectory;

0: not to delete subdirectory.

- Exclude=Exclusion criteria

define the exclusion type. (e.g.*.dat)

The exclusion file name can also be written in directly.

Semicolon is used to separate multiple criteria here.

- Pathmatch=regular expression

Use regular expressions to describe similar path. If is valid, then it will combine (Pathmatch) value to as full scanning path.

E.g.

```
Item0=File|%Internet_Cache%|(Filter=*.*) (FindInSubFolder=1)(RemoveSubFolder=1)(Exclude
Item6=File|%LocalAppData%\Yandex\YandexBrowser\UserData|(Filter=*.*) (FindInSubFolder=1
```

- **RegKey**

- RegExpr=regular expression
Use regular expressions to filter qualified keys.
- FindInSubKey= 1 or 0
1: search sub key;
0: not to search sub key.
- ShowValues= 1 or 0
1: display the value under the key specified;
0: not to display the value under the key specified.
- RemoveSelf=1 or 0
1: delete itself;
0: not to delete itself.

E.g.

```
Item0=RegKey|HKEY_CURRENT_USER\Software\Microsoft\Windows\CurrentVersion\Explorer\RunV
```

- **RegValue**

- RegExpr=regular expression
Use regular expressions to filter qualified keys.
- FindInSubKey=1 or 0
1: search sub key;
0: not to search sub key.

E.g.

```
Item0=RegValue|HKEY_CURRENT_USER\Software\Classes\Local Settings\Software\Microsoft\Wi
```

- **SQL**

- TableName=the table needed query (This item is must be required.)
- Condition=SQL sentence (It is optional.)

E.g.

```
Item0=SQL|%LOCAL_APPDATA%\Google\Chrome\User Data\Default\Cookies|(TableName=cookies)
```

- **Lnk**

The same like File above.

III. A complete example following the custom rules:

```
[OtherApps4]
TranName=AcrobatReader
DefaultName=Acrobat Reader
Exists=HKEY_CURRENT_USER\Software\Adobe\Acrobat Reader(reg)
Recommended=1
Item0=RegKey|HKEY_CURRENT_USER\Software\Adobe\Acrobat Reader\1.0\AVGeneral\cRecentFile
Item1=RegKey|HKEY_CURRENT_USER\Software\Adobe\Acrobat Reader\2.0\AVGeneral\cRecentFile
Item2=RegKey|HKEY_CURRENT_USER\Software\Adobe\Acrobat Reader\3.0\AVGeneral\cRecentFile
Item3=RegKey|HKEY_CURRENT_USER\Software\Adobe\Acrobat Reader\4.0\AVGeneral\cRecentFile
Item4=RegKey|HKEY_CURRENT_USER\Software\Adobe\Acrobat Reader\5.0\AVGeneral\cRecentFile
Item5=RegKey|HKEY_CURRENT_USER\Software\Adobe\Acrobat Reader\6.0\AVGeneral\cRecentFile
Item6=RegKey|HKEY_CURRENT_USER\Software\Adobe\Acrobat Reader\7.0\AVGeneral\cRecentFile
Item7=RegKey|HKEY_CURRENT_USER\Software\Adobe\Acrobat Reader\8.0\AVGeneral\cRecentFile
Item8=RegKey|HKEY_CURRENT_USER\Software\Adobe\Acrobat Reader\9.0\AVGeneral\cRecentFile
Item9=RegKey|HKEY_CURRENT_USER\Software\Adobe\Acrobat Reader\10.0\AVGeneral\cRecentFile
Item10=RegKey|HKEY_CURRENT_USER\Software\Adobe\Acrobat Reader\11.0\AVGeneral\cRecentFile
Item11=RegKey|HKEY_CURRENT_USER\Software\Adobe\Adobe Acrobat\11.0\CompoundDocs\cStored
Item12=File|%local_appdata%\Adobe\Acrobat\7.0\Cache\Search70;%local_appdata%\Adobe\Acr
Item13=File|%ProgramFiles%\Adobe\Acrobat 7.0\Reader;%ProgramFiles%\Adobe\Acrobat 7.0\R
```

IV. Environment Variables supported:

1. All the regular system environment variables.
e.g. %appdate%, %windir%, %systemroot%, %programfiles%, %userprofile%, etc..
2. Extensional environment variables, which are customized by Wise Disk Cleaner.

Environment variables	Path
%local_appdata%	%userprofile%\Appdata\Local
%startmenu%	%programdata%\Microsoft\Windows
%common_startmenu%	%appdata%\Roaming\Microsoft\Windows Menu
%common_appdata%	%programdata%
%COMMON_DESKTOPDIRECTORY%	C:\Users\Public\Desktop
%DESKTOPDIRECTORY%	C:\Users\Desktop
%INTERNET_CACHE%	Directory to save IE caches.
% DESKTOP%	C:\Users\Desktop
%PROGRAMS%	%appdata%\Roaming\Microsoft\Windows Menu\programs
%PERSONAL%	C:\Users\Documents
%FAVORITES%	Where IE Favourites are saved.
%STARTUP%	%appdata%\Roaming\Microsoft\Windows Menu\Programs\Startup
%RECENT%	%appdata%\Roaming\Microsoft\Windows
%SENDTO%	%appdata%\Roaming\Microsoft\Windows
%SYSTEMX86%	%Windir%\SysWOW64 (only valid for 64 bit OS)
%PROGRAM_FILESX86%	C:\Program Files (x86) (only valid for 32 bit OS)
%PROGRAM_FILES_COMMON%	%programfiles%\Common Files
%PROGRAM_FILES_COMMONX86%	%PROGRAM_FILESX86%\Common Files (only valid for 32 bit OS)
%COMMON_DOCUMENTS%	C:\Users\Public\Documents

©2006-2023 WiseCleaner.com all right reserved, powered by Gitbook
 Edited: 2023-10-17

Menu & Settings

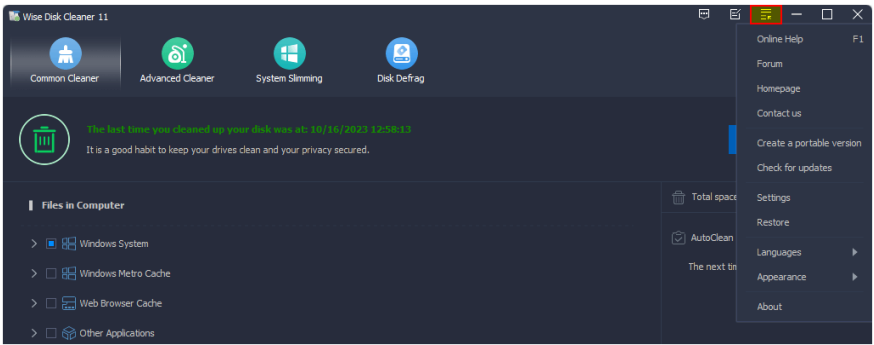
3.1 Menu

3.2 Settings

©2006-2023 WiseCleaner.com all right reserved, powered by GitbookEdited:
2023-10-17

Menu

Wise Disk Cleaner's menu has many other features, such as **Help Online**, **Forum**, **Home Page**, **Contact us**, **Create Portable version**, **Check for updates**, **Settings**, **Restore**, **Languages**, **Appearance**, **About**.



1. Create Portable version

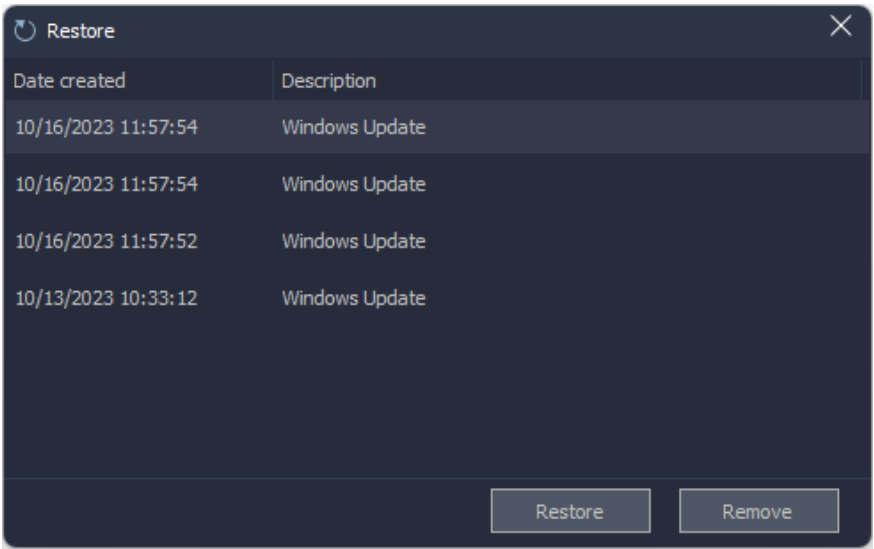
Portable version, you can move it to a removable device (a USB device), run Wise Disk Cleaner easily in other Windows system without installing.

2. Settings

Please see the instruction in [Settings](#) section.

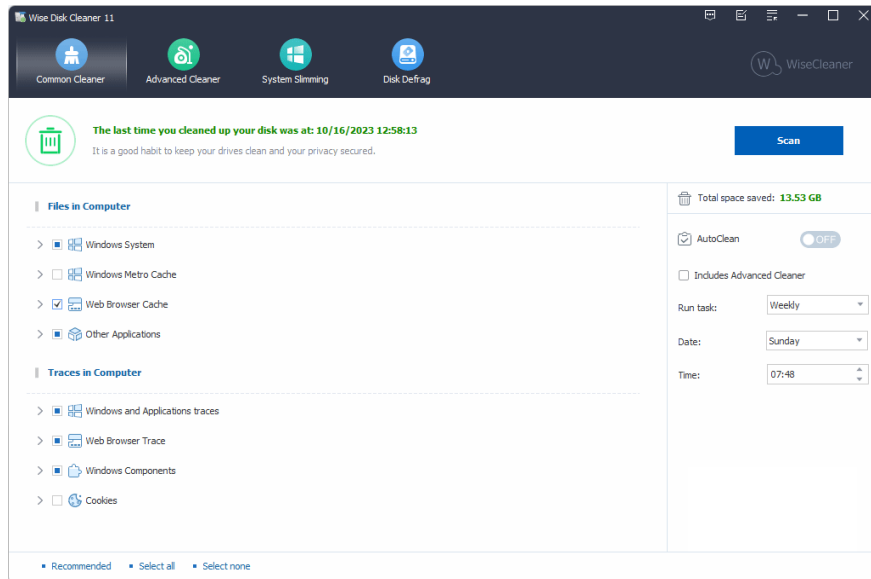
3. Restore

For safety's sake, System Slimming will automatically create a restore point for you but only on your first use of it. Restore Center will list all available system restore points.



4. Appearance

Wise Disk Cleaner version 11 does not support changing skin color, but provides 2 themes, light and dark.



5. Languages

Wise Disk Cleaner supports 40 languages, English, Arabic, Belarusian, Bulgarian, Catalan, Chinese Simplified, Chinese Traditional, Czech, Danish, Dutch, Finnish, French, German, Greek, Hungarian, Italian, Japanese, Korean, Nepali, Norwegian, Polish, Portuguese, Romanian, Russian, Serbian, Slovak, Slovenian, Spanish, Swedish, Thai, Turkish, Ukrainian, Welsh.

If Wise Disk Cleaner does not support your native language and you would like to help us translate it, please refer to [this page](#). We are very grateful for your support and help.

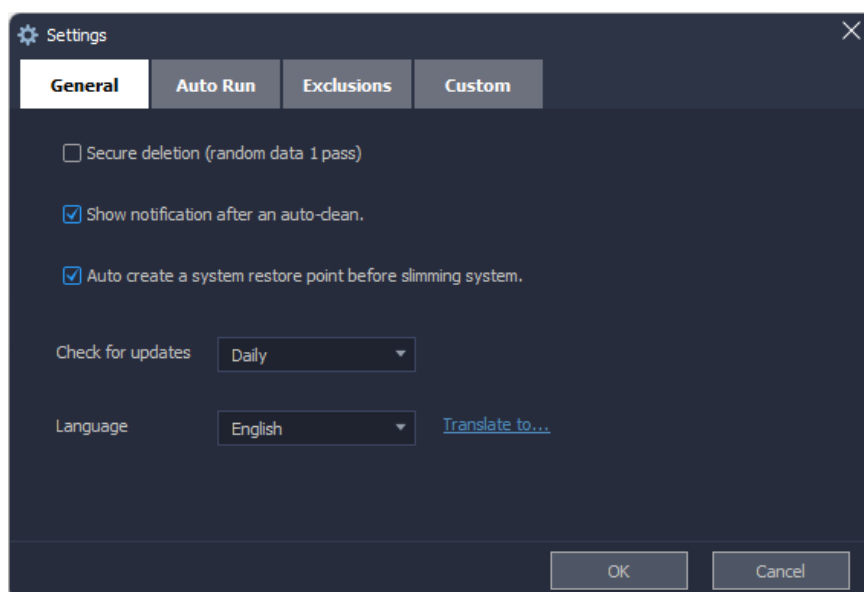
©2006-2023 WiseCleaner.com all right reserved, powered by GitbookEdited:
2023-10-17

Settings

In Settings window you can change the settings of Wise Disk Cleaner. All settings can be found under these 4 sections: [General](#), [Auto Run](#), [Exclusion](#), [Custom](#).

1. General

This tab has 5 options.

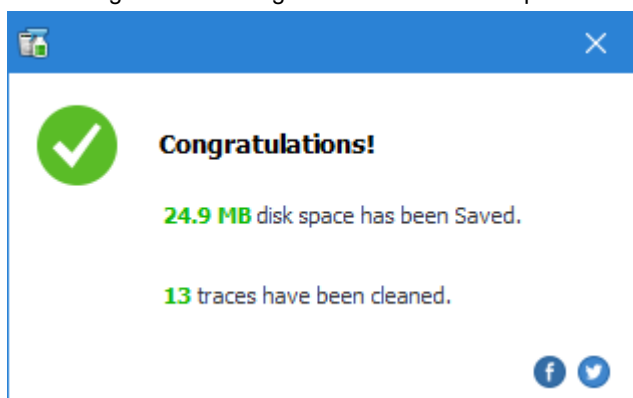


- **Secure deletion (random data 1 pass)**

If this option is selected, Wise Disk Cleaner deletes the found useless files firstly, then overwrite them with 0 bytes files, finally remove these 0 bytes files. So, the deletion will take a little longer than the regular deletion.

- **Show notification after an auto-clean**

If this option is selected, after running the auto-clean (include Auto Run, Command Line, and AutoClean), Wise Disk Cleaner will prompt the summary of cleaning in the lower right corner of the desktop.

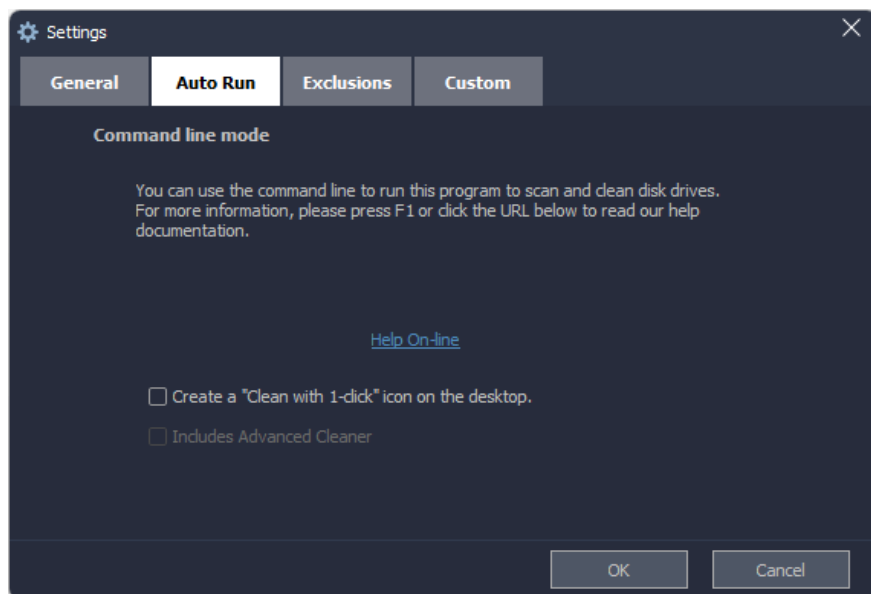


- **Auto create a system restore point before slimming system**
We recommend keeping this option selected. If this option is deselected, Wise Disk Cleaner will not create a system restore point before [slimming down the system](#).
- **Check for updates**
It is used to set the frequency of check updates: **Daily, Weekly, Monthly, Never (Not recommended)**
- **Default Language**
You can change software language to your mother tongue.

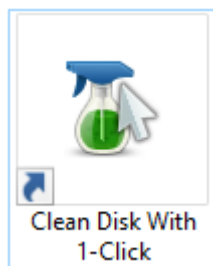
2. Auto Run (Clean with 1 click)

Here, you can create a **【Clean with 1 click】** icon and place this icon on the desktop. You can simply double-click the icon to run Disk Cleaner silently (run in background, without opening Wise Disk Cleaner window.)

If you want to run Advanced Cleaner at the same time, remember to select **【Include advanced cleaner】** .

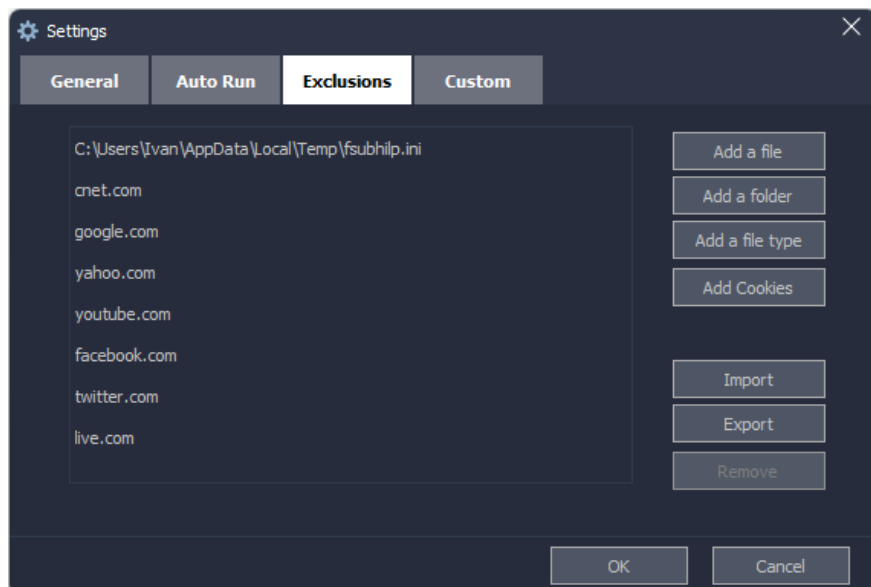


Clean with 1 click is as the same as **Command Line** mode.



3. Exclusion

All ignored entries from the scanning list will be added to this exclusion list automatically. Of course, you can also click the buttons **Add a file**, **Add a folder**, **Add a file type**, **Add Cookies** to add new items.



- **Add a file**

This is easy to understand, add a file to the exclusion list, then Wise Disk Cleaner won't remove this file. It is the same as **【Ignore selected】** in the context menu.

- **Add a folder**

It is the same as Add a file, Wise Disk Cleaner won't remove files in the excluded folders.

- **Add a file type**

Wise Disk Cleaner won't clear files that have the same file extension. For example, if you add ***.docx** to the exclusion list, Wise Disk Cleaner does not remove Word documents.

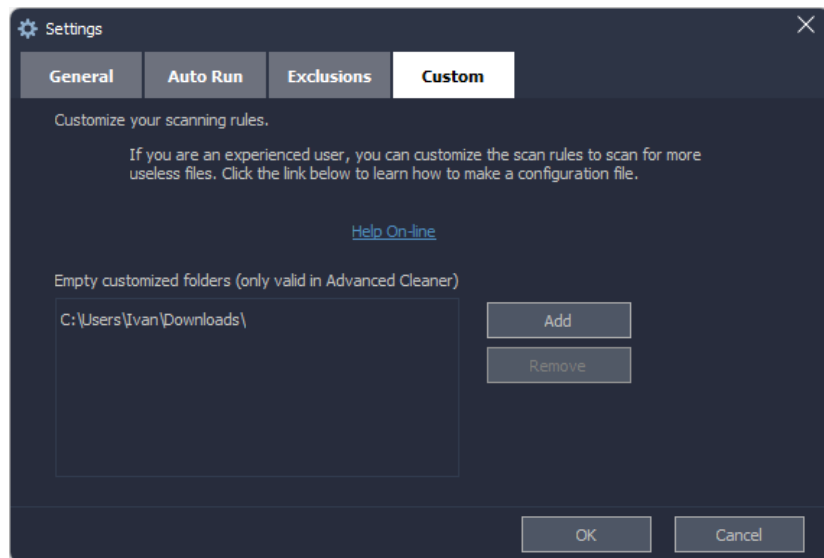
- **Add cookies**

If you don't want to clear website cookies, just need to add the domain to the exclusion list. For example, **google.com**.

4. Custom

- **Custom folders to empty**

Wise Disk Cleaner will clean the added folders while running Advanced Cleaner, **remove all files in the folder**.



- **Customize scanning rule**

Since Wise Disk Cleaner version 8, it supports user to customize scanning rules to clear un-list applications. Click **Help Online** to learn [How to make Wise Disk Cleaner configuration file](#).

©2006-2023 WiseCleaner.com all right reserved, powered by GitbookEdited:
2023-10-17

About WiseCleaner

[4.1 About Us](#)

[4.2 Awards](#)

[4.3 Help Us](#)

©2006-2023 WiseCleaner.com all right reserved, powered by Gitbook
Edited: 2023-10-17

About Us

Who are we?

WiseCleaner started in February 2005 after many years of preparation. The company specializes in developing freeware and shareware for Windows, system tune-up utilities, and other software, such as our "Free YouTube Utility". Presently, many senior tech members work for the company. And we are setting up a special retail system and support network to provide the best possible service. The company is expanding into diverse forms of system utilities for our customers.

Contact Us

- For technical support, please contact **support@wisecleaner.com**
- Pre-sales questions and order problems, please contact **sales@wisecleaner.com**
- Any Media-related inquiries, please contact **press@wisecleaner.com**
- Any cooperation, please contact **partner@wisecleaner.com**

Official Websites

English: <https://www.wisecleaner.com>











中文(中国): <https://www.wisecleaner.com.cn>

Deutsch: <https://www.wisecleaner.eu>

日本語: <https://jp.wisecleaner.com>

©2006-2023 WiseCleaner.com all right reserved, powered by Gitbook
Edited: 2023-10-16

Awards of WiseCleaner

Learn more about [WiseCleaner awards](#).

©2006-2023 WiseCleaner.com all right reserved, powered by GitbookEdited:
2023-10-16

Help Us

Donation

Donating to us is the direct way to help us to develop and maintain Wisecleaner products. Please use the following "Donate" button to help us.



Localize Wisecleaner

Our software supports multiple languages, you can [read this page](#) to see which languages have been included in our software. If you can help us to translate the materials about our software to your mother tongue, you will get a free license key once your translation is adopted by our editor! For example, you will get a license key of Wise Care 365 after your translation to Wise Care 365 or translations to Wise Disk Cleaner and Wise Registry Cleaner being adopted.

Recommend Wisecleaner to Others

You are always appreciated to recommend our products to your families, friends, classmates or colleagues etc. You can introduce it on your blog, facebook, twitter, youtube and so on. Of course, you can follow us from below links:



©2006-2023 WiseCleaner.com all right reserved, powered by GitbookEdited:
2023-10-16