

Table of Contents

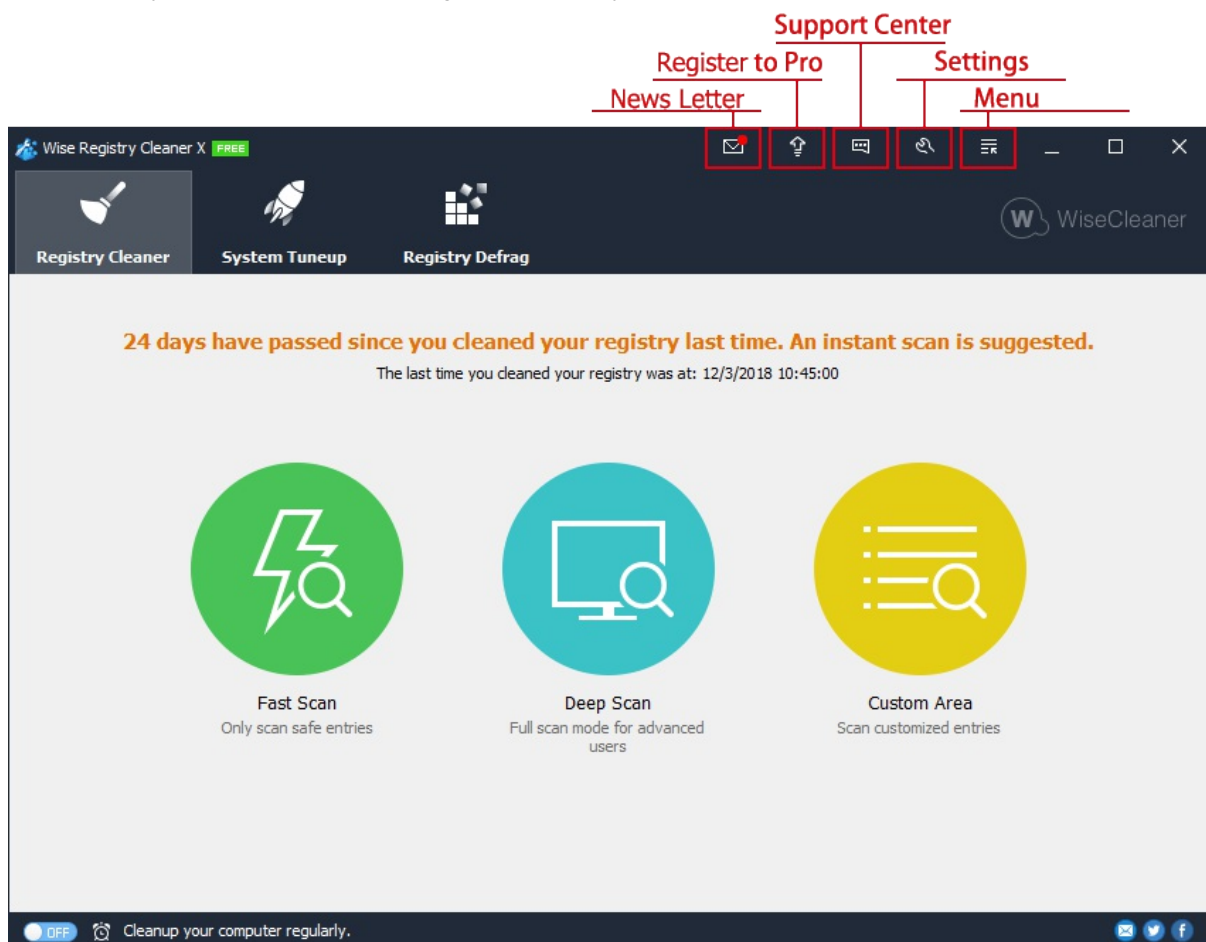
Welcome	1.1
1. Overview	1.2
1.1 Features	1.2.1
1.2 System Requirements	1.2.2
1.3 Install, Uninstall, Update	1.2.3
2. How To Use	1.3
2.1 Registry Cleaner	1.3.1
2.2 System Tuneup	1.3.2
2.3 Registry Defrag	1.3.3
2.4 Backup & Restore	1.3.4
2.5 Command Line	1.3.5
2.6 Scheduled Tasks	1.3.6
3. Menu & Settings	1.4
3.1 Menu	1.4.1
3.2 Settings	1.4.2
4. About WiseCleaner	1.5
4.1 About Us	1.5.1
4.2 Awards	1.5.2
4.3 Help Us	1.5.3

Welcome to use Wise Registry Cleaner

Wise Registry Cleaner speeds up your PC by registry cleanups.

The older your PC is, the more junked-up its Registry becomes. Badly written programs (and there are plenty of those around) don't bother to clean the Registry when you uninstall them, and some programs add unnecessary junk to the Registry. The more junked-up your Registry, the more likely it is to crash or to slow down your PC.

This freebie does a neat job of cleaning out the Registry junk. It scans the Registry, flagging orphaned or bad Registry entries, and shows you the name and values for each. It identifies Registry entries that may be dangerous to delete, and those that are safe to delete, so you can distinguish between the two. It also lets you decide which entries to delete, and which to keep. For safety's sake, it can also back up your Registry before a scan, so that you can restore it, if the program causes any problems.



©2006-2020 WiseCleaner.com all right reserved, powered by GitbookEdited: 2020-08-14

Overview

[1.1 Key Features](#)

[1.2 System Requirements](#)

[1.3 Install, Uninstall, Update](#)

©2006-2020 WiseCleaner.com all right reserved, powered by GitbookEdited: 2020-08-13

Key Features

- **Secure to use**

All changes to your system are monitored by Wise Registry Cleaner and can be undone with a few mouse clicks, so you can use Wise Registry Cleaner without any doubt.

- **Accurate and Thorough**

Using complex algorithms, Wise Registry Cleaner accurately identifies obsolete and useless registry entries. Due to its advanced algorithm wise registry cleaner can find more registry issues than other registry tools.

- **Fast Speed**

Incorporated a fast search algorithm during re-construction, Wise Registry Cleaner, we can proudly say, has the fastest scanning speed in the world!

- **Easy to Use**

Wise Registry Cleaner has always been committed to improve its software functions to clean and optimize registry, and now it's time to make its interface more attractive and more friendly to use.

- **Powerful Functions**

Wise Registry Cleaner supports custom (You can customize the registry section which should be deleted), so even you yourself can tune up system and network. What's more, it can help you defragment your registry to keep it slim and stable.

©2006-2020 WiseCleaner.com all right reserved, powered by GitbookEdited: 2020-08-13

System Requirements

Wise Registry Cleaner will run on any PC running Microsoft Windows XP or later. If you're running one of the following operating systems, it's OK to run Wise Registry Cleaner:

1. Windows 10 (All Windows Editions, including both 32-bit and 64-bit)
2. Windows 8 (All Windows Editions, including both 32-bit and 64-bit)
3. Windows 7 (All Windows Editions, including both 32-bit and 64-bit)
4. Windows Vista (All Windows Editions, including both 32-bit and 64-bit)
5. Windows XP (All Windows Editions, including both 32-bit and 64-bit)

Since Wise Registry Cleaner is a small and quick program, it takes less memory and needs fewer hard drive requirements.

Wise Registry Cleaner does not currently support Mac OS or Linux.

©2006-2020 WiseCleaner.com all right reserved, powered by GitbookEdited: 2020-08-13

Download, Install, Uninstall and Upgrade

You can refer to the following instructions about [how to download Wise Registry Cleaner](#), [how to install Wise Registry Cleaner](#), [how to uninstall Wise Registry Cleaner](#), [how to update Wise Registry Cleaner](#).

1. Download

You are always welcome to download Wise Registry Cleaner from our official site:

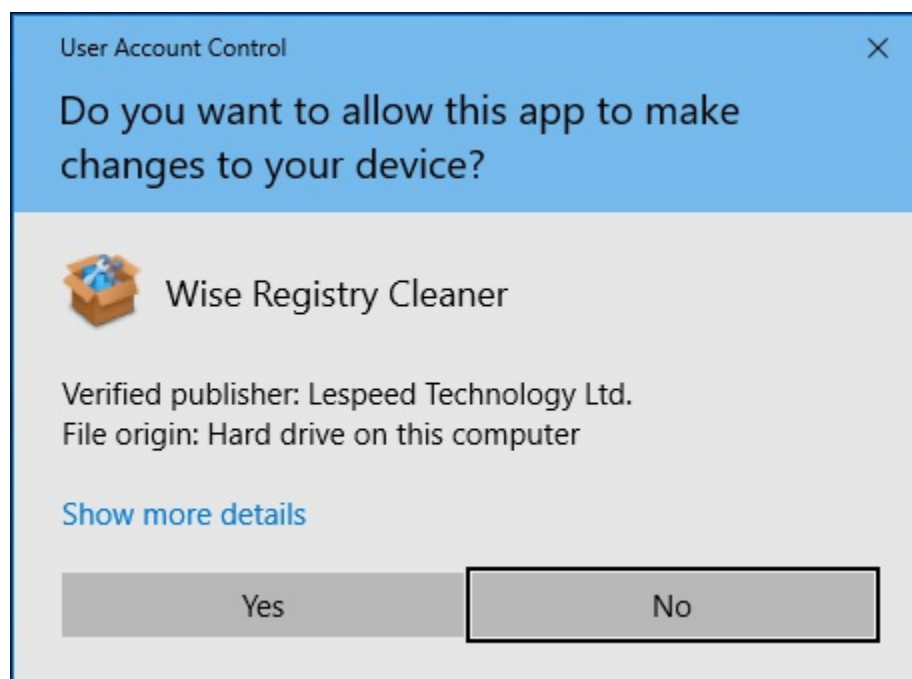
Homepage: <https://www.wisecleaner.com>

Wise Registry Cleaner: <https://www.wisecleaner.com/wise-registry-cleaner.html>

Download Center: <https://www.wisecleaner.com/download.html>

2. Install

After Wise Registry Cleaner download finishes, please find out the setup file, double click WRCFree.exe, and then click **"Yes"** after the following dialog box appears.



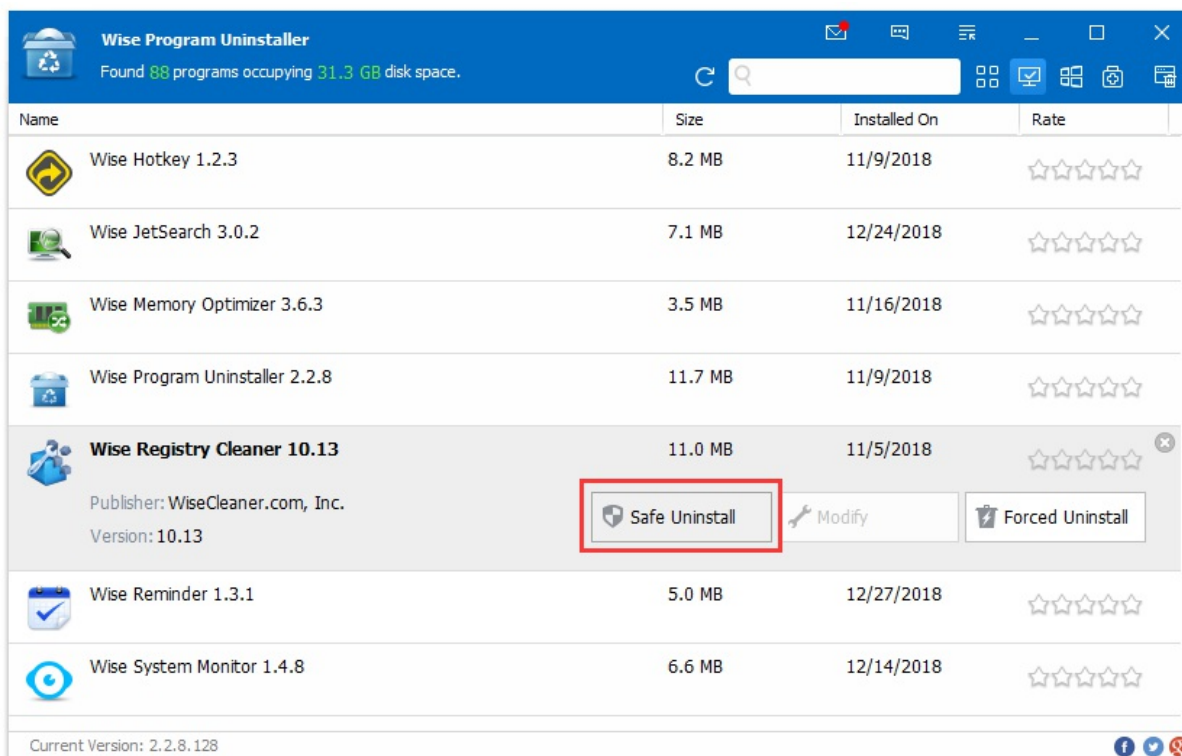
Then the installer will start automatically and will guide you through the rest of the installation process. :)

3. Remove/Uninstall


There are 3 methods to uninstall a program. Please ensure that the application has been closed.

Method 1: Use Wise Program Uninstaller

If you have installed [Wise Program Uninstaller](#), just open it, scroll and find the program you want to uninstall, select it, and then click **Safe Uninstall**. This is the simplest way to uninstall a program and no leftovers.



Method 2: Use the application self-uninstall program

Please open Wise Registry Cleaner folder, find and run  **unins000.exe**

- If you are running a **32bit** system, the path is: **C:\Program Files\Wise\Wise Registry Cleaner**
- If you are running a **64bit** system, the path is: **C:\Program Files (x86)\Wise\Wise Registry Cleaner**

Method 3: Use system Control Panel

- If you are running a XP system, please click **Start – Control Panel – Add or Remove Programs**, scroll down and find the program you want to uninstall, then click **Remove**
- If you are running a Vista/Win7 system, please click **Start – Control Panel – Programs – Uninstall a Program**, scroll down and find the program you want to uninstall, then click **Uninstall**
- If you are running a Win 8 system, please click **Settings – Control Panel - Programs – Uninstall a Program**, scroll down and find the program you want to uninstall, then click **Uninstall**
- If you are running a Win 10 system, please click **Start – Settings – System – Apps & Features**, scroll down and find the program you want to uninstall, then click **Uninstall**

4. Upgrade

Please run the application, click **Menu - Check for Updates**.

Also, you can download the latest version from: <https://www.wisecleaner.com/download.html>. Please ensure Wise Registry Cleaner has been closed, and then install the latest version.

The minor upgrade can directly install the new version \(\for example: 1.0-1.x\). The major upgrade needs to uninstall the old version, and then install the new version \(\for example: 1.x-2.x\).

How to Use Wise Registry Cleaner

[2.1 Registry Cleaner](#)

[2.2 System Tuneup](#)

[2.3 Registry Defrag](#)

[2.4 Backup and Restore Registry](#)

[2.5 Command Line](#)

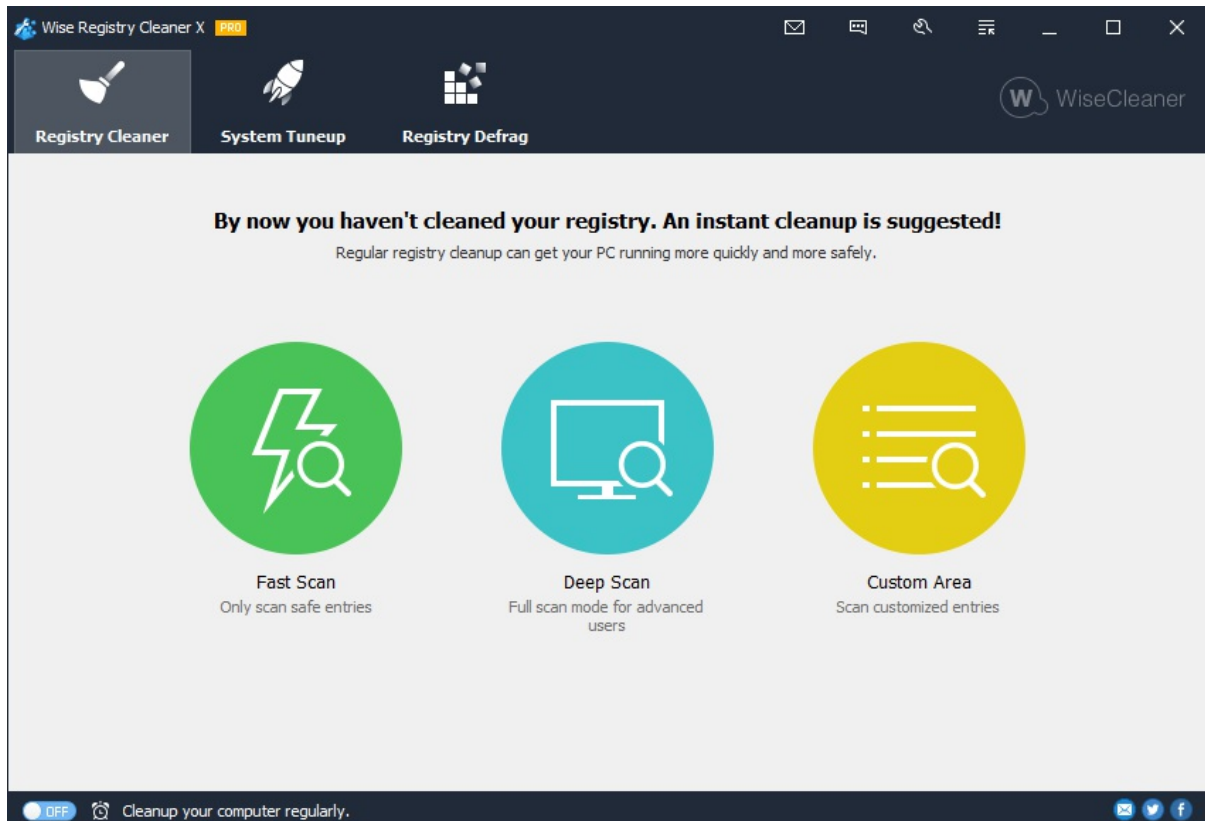
[2.6 Scheduled Tasks](#)

©2006-2020 WiseCleaner.com all right reserved, powered by GitbookEdited: 2020-08-13

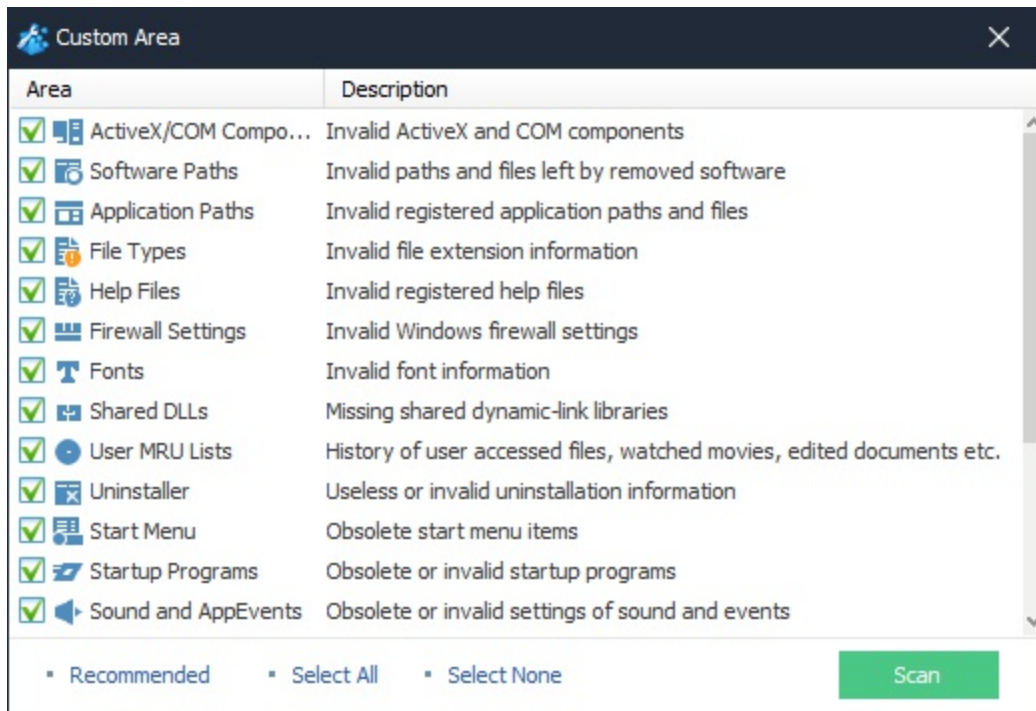
Registry Cleaner

1. Select a registry scan mode

Wise Registry Cleaner provides 3 scan modes: **Fast Scan**, **Deep Scan**, and **Custom Scan**.



- **Fast Scan** We also call it **Safe Scan**, which only scan and list the safe entries in scan result list.
- **Deep Scan** We also call it **Full Scan**, scan and list all entries, even though some may not be fully safe to fix. **(for Advanced users only)**
- **Custom Scan** Here, you can tick the corresponding check boxes of the registry entries that you want to scan. **(for Advanced users only)**





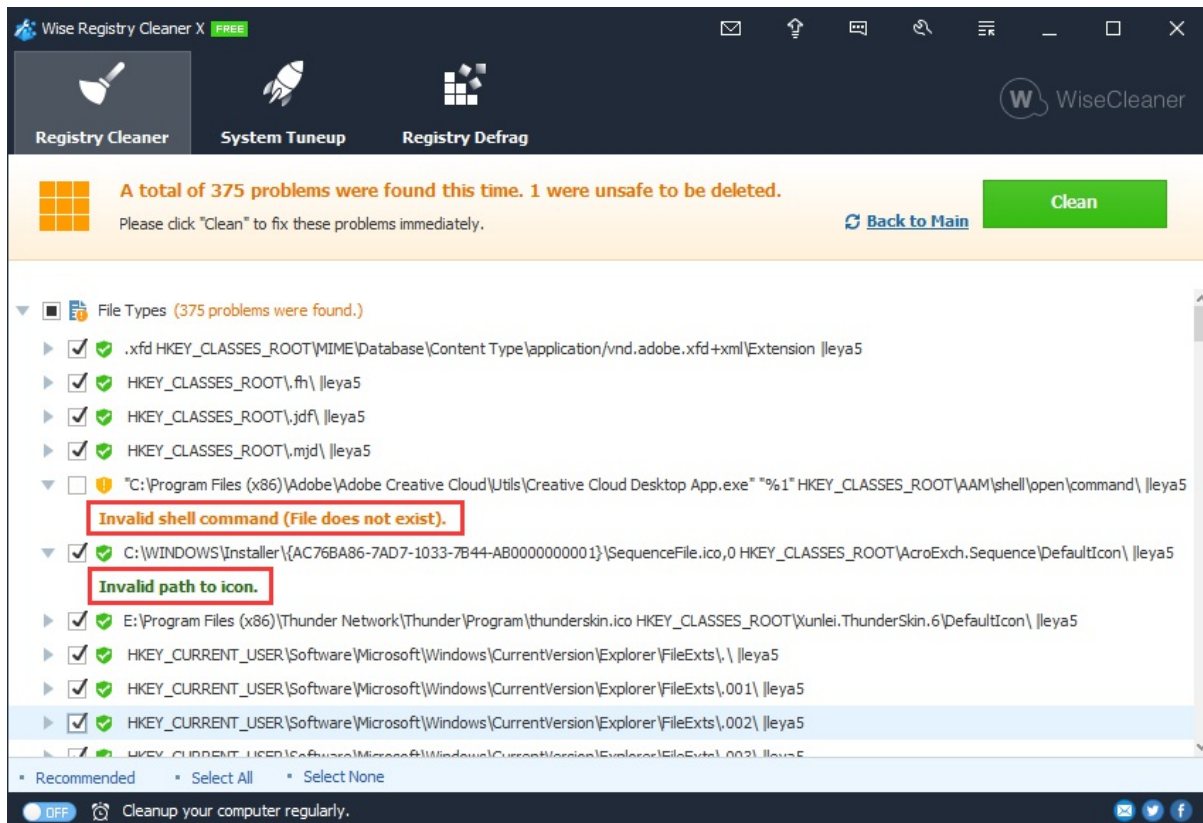
2. Check the scan results

After Wise Registry Cleaner finishes scanning the registry, you can easily know which part is problematic and how many problems there are. And you can review the problem details about an item by clicking the item name.

☒ , it means that **all content** under the item are selected.

☐ , it means that **part of the content** under the item are selected. Before changing it to all selected, please expand to see if the content contained in this item needs to be cleaned up. And you may see a shield icon with 2 different colors at the beginning of each line.

-  : Green shield, this issue is marked as safe to remove.
-  : Orange shield, this issue is uncertainly safe to remove.



Right-click on an item, you can call out the right-click menu.

- **Ignore Selected Entry** This command will add selected registry entry to Exclusion List, Wise Registry Cleaner will not scan and clear this entry any more.
- **Select Safe Entries** This command will only select safe registry entries from displayed scan result.
- **Select All, Select None**
- **Open in Registry Editor** This command will open selected registry entry in **Registry Editor**. Double Click one entry can trigger this command too.
- **Export to...** This command will save scan result to a text file. It is a useful command that you can send this file to wisecleaner support team to identify your problem.

3. Fix Registry Issues

After registry scan is finished, please click "**Clean**" to solve problems in your Windows Registry. At last the results will show you which are fixed and which are failed to fixed. (Some registry entries in use by system or other applications may be failed to fix.)

©2006-2020 WiseCleaner.com all right reserved, powered by Gitbook Edited: 2020-08-26

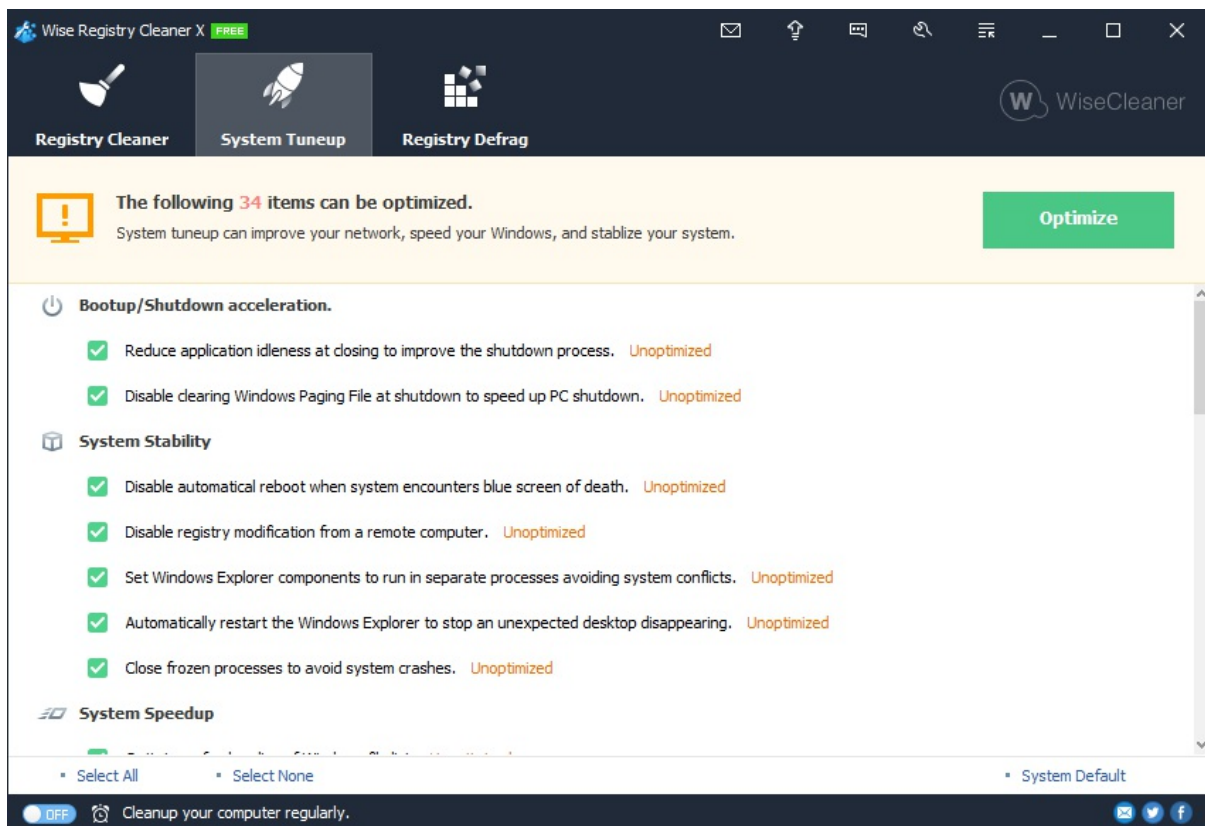
System Tuneup

1. Optimize System Performance

Wise Registry Cleaner can tune up your PC and accelerate its speed only with one click. Select the items you want and then click the big green **Optimize** button.

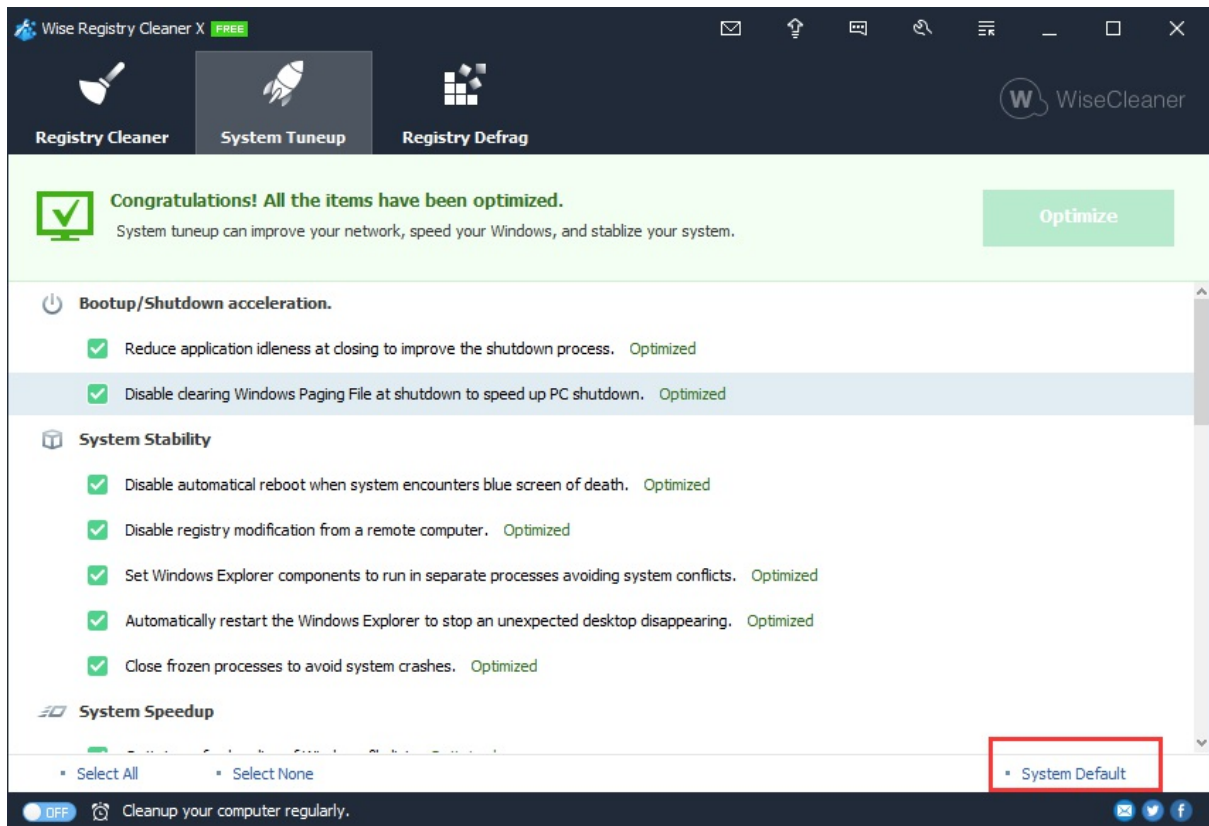
Wise Registry Cleaner supports to optimize the following 5 items.

- **Bootup/Shutdown acceleration**
- **System Stability**
- **System Speedup**
- **Network Speedup**
- **SSD Optimize**



2. Restore / Undo Optimization

If you want to roll back to system default settings, please select items you want to restore, then click **System Default** at lower right corner. Then you need to reboot the system.



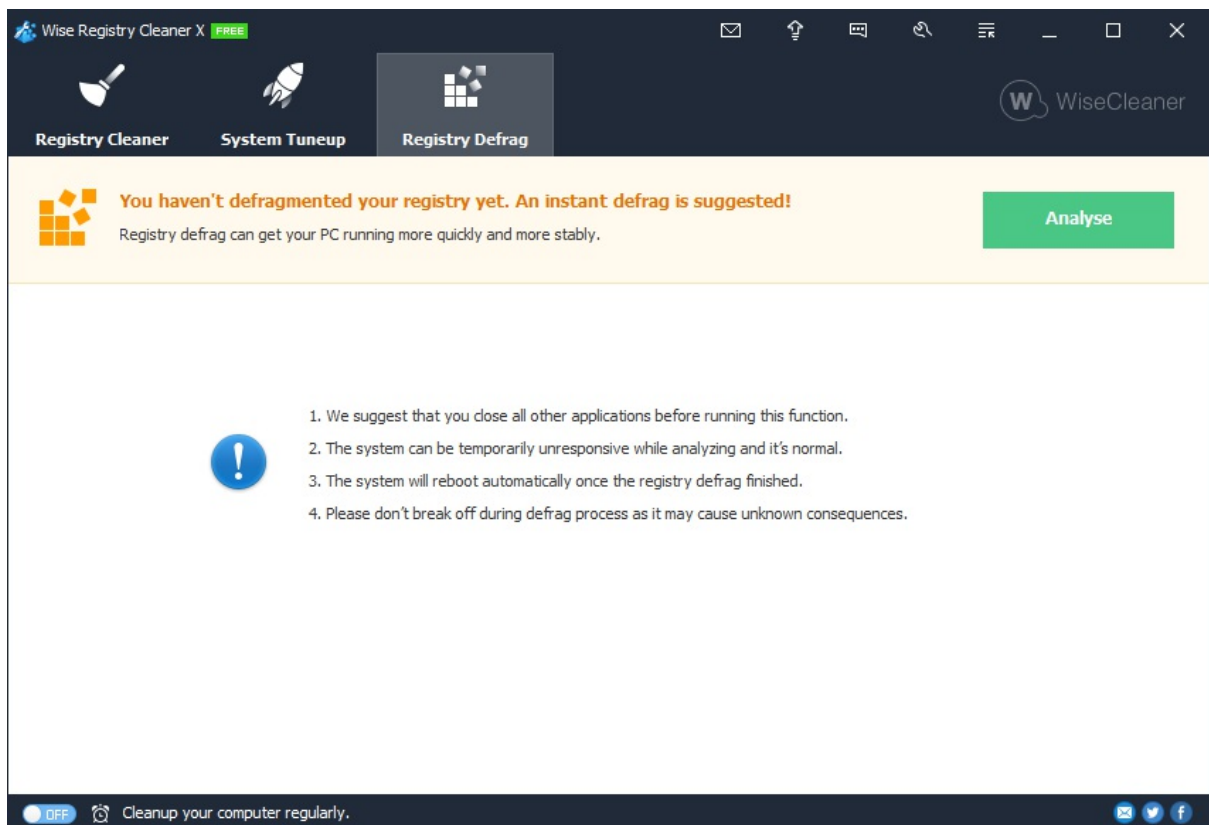
Undo the optimization will come into effect after restart.

©2006-2020 WiseCleaner.com all right reserved, powered by GitbookEdited: 2020-08-14

Registry Defrag

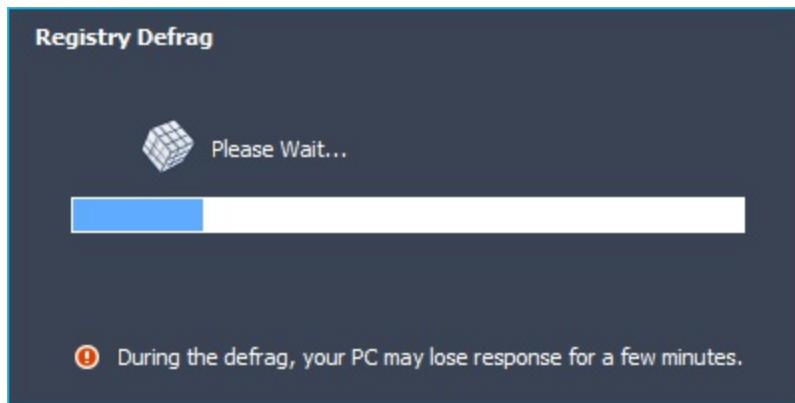
This tool will Analyse and De-fragment the registry. As you add, remove, cut, copy and paste programs and files, the registry (road map for your computer) in your computer becomes fragmented, this option will reorganise your registry to make sure you get the most efficient PC.

Please save your work before the registry defrag, the system will lose response for a few minutes during the registry analysis. Registry defrag requires a system restart. Do not use any method to interrupt the registry defrag, otherwise it will cause a serious system failure.



1. Analyze the registry status

Wise Registry Cleaner will first analyze the system's registry to determine whether the registry needs to be defragged. During the analysis, the system will lose its response for a few minutes, don't worry.

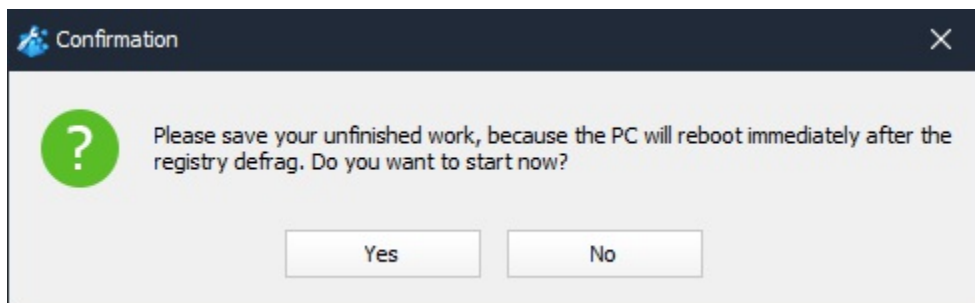


The optimization rate is: 0.55%. You can defragment your registry next time.		<div>Defragment</div>	
Group name	Current Size	New Size	Redundancy Rate
\REGISTRY\MACHINE\SOFTWARE	113.75 MB	113.70 MB	0.04%
\REGISTRY\USER\DEFAULT	1.00 MB	848.00 KB	17.19%
\REGISTRY\MACHINE\SECURITY	64.00 KB	40.00 KB	37.50%
\REGISTRY\MACHINE\SAM	128.00 KB	72.00 KB	43.75%
\REGISTRY\USER\S-1-5-20	512.00 KB	276.00 KB	46.09%
\REGISTRY\USER\S-1-5-19	256.00 KB	196.00 KB	23.44%
\REGISTRY\USER\S-1-5-21-4174406467-3388161859-2284861639-1001	12.25 MB	12.10 MB	1.24%
\REGISTRY\USER\S-1-5-21-4174406467-3388161859-2284861639-1001_Classes	10.25 MB	10.24 MB	0.11%
Total:	138.19 MB	137.43 MB	0.55%

☒ Automatically create a system restore point

2. Defrag the registry

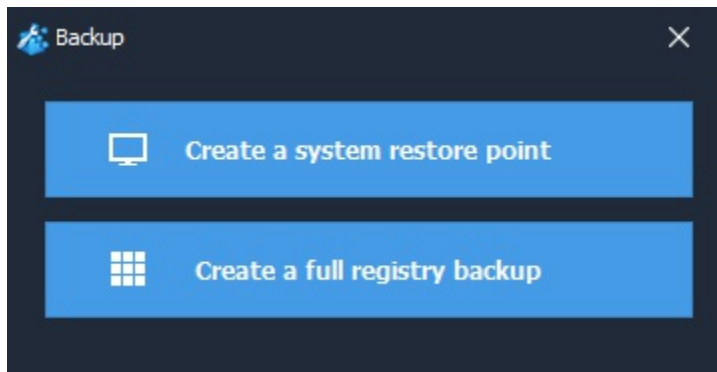
After the analysis is completed, click the [**Defragment**] button, Wise Registry Cleaner will prompt you to restart the system.



Backup & Restore

1. Backup

You can open Backup center from [Menu](#), this function can create a full registry backup file or create a system restore point.

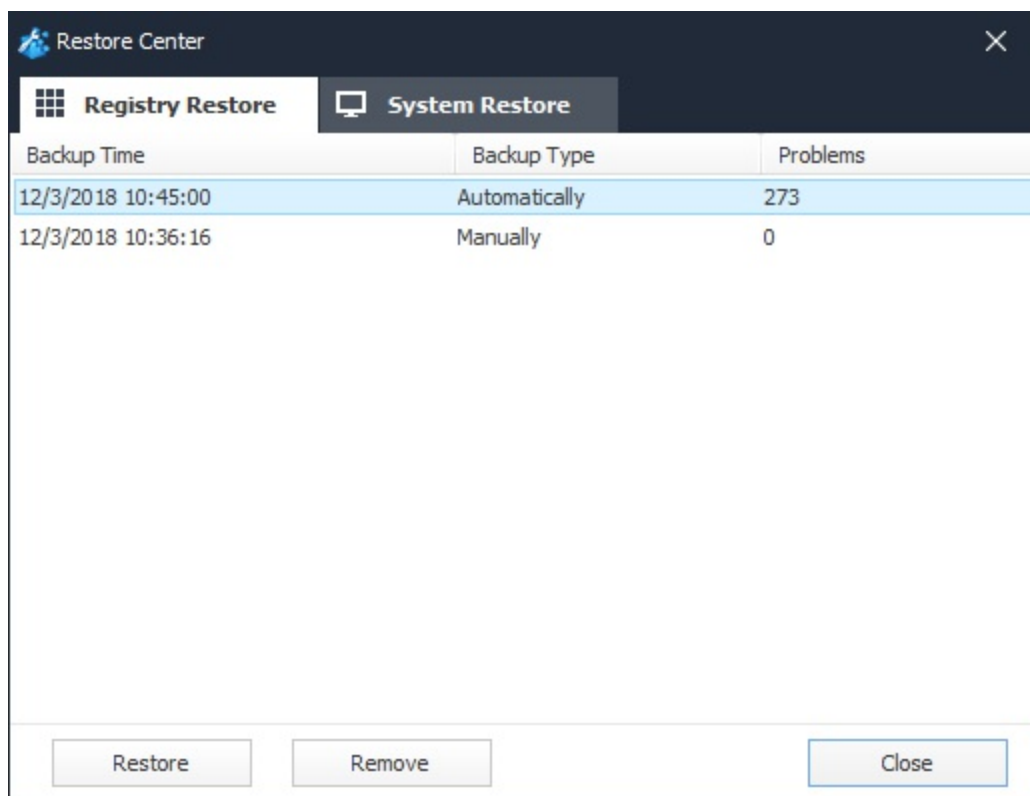


- **Create a system restore point** If you want to create a current system restore point, select **Create a system restore point** and click OK to create a system restore point.
- **Create a full registry backup** If you want to create a full registry backup file, choose **Create a full registry backup** and click OK to create a full registry backup file. (The file will be saved in the [backup folder](#).)

2. Restore

You can open Restore center from [Menu](#).

If you want to restore registry from the backup file, what you need to do is to choose a backup file and then click OK. The restore process will then run automatically. (System Restore are similar.)



©2006-2020 WiseCleaner.com all right reserved, powered by GitbookEdited: 2020-08-14

Command Line

If you're familiar with the command line, you can run Wise Registry Cleaner from the command line:

Parameter	Explanation	Sample
WiseRegistryCleaner.exe -a <-safe>	Wise Registry Cleaner runs automatically and silently, using the current set of saved settings to repair your Windows registry errors. (only safe registry entries) Wise Registry Cleaner then exits.	"C:\Program files\Wise\Wise Registry Cleaner \WiseRegistryCleaner.exe" -a "C:\Program files\Wise\Wise Registry Cleaner \WiseRegistryCleaner.exe" -a -safe
WiseRegistryCleaner.exe -a -all	Wise Registry Cleaner runs automatically and silently, using the current set of saved settings to repair your Windows registry errors (all including safe and unsafe). Wise Disk Cleaner then exits.	"C:\Program files\Wise\Wise Registry Cleaner \WiseRegistryCleaner.exe" -a -all

NOTE:

1. These are advanced techniques for advanced users only.
2. Command Line and "Clean with 1 click" will remember and clean your last selected items.
3. After auto clean, there will be a result message in the lower right corner of desktop.



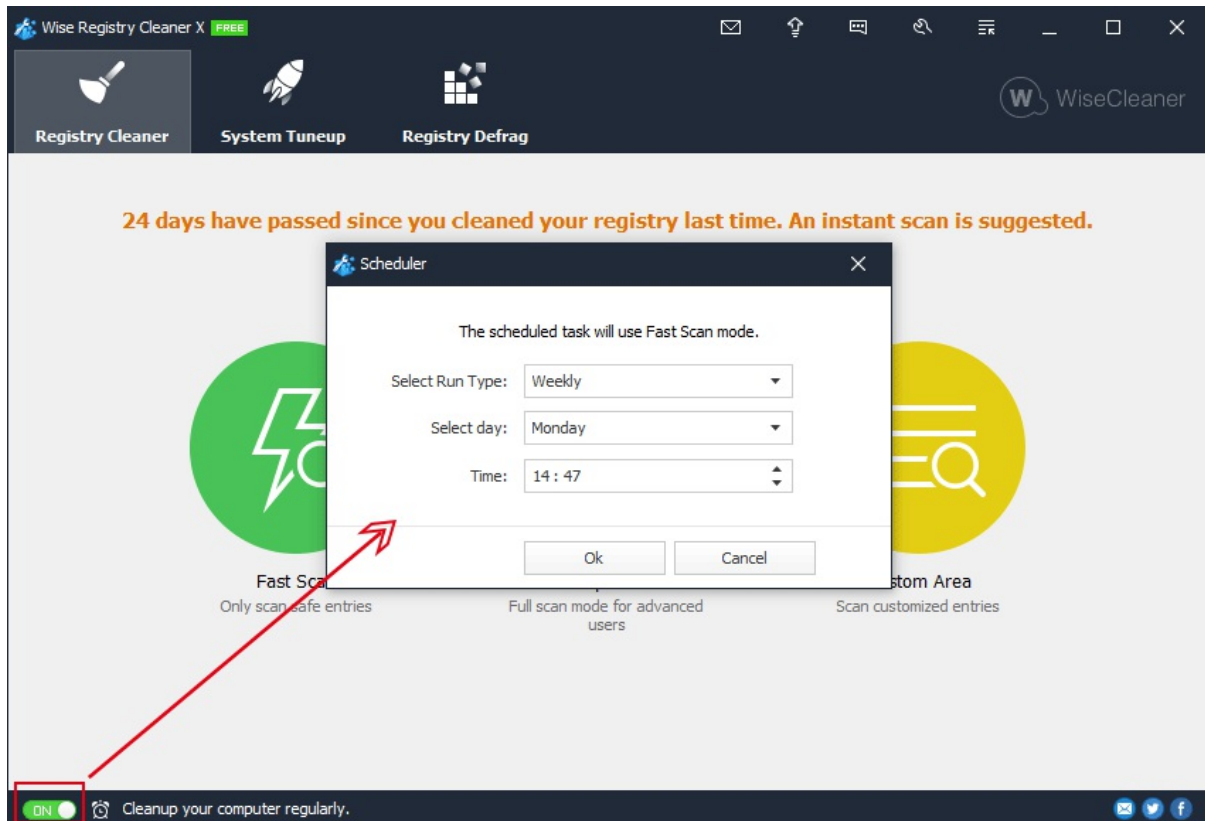
©2006-2020 WiseCleaner.com all right reserved, powered by GitbookEdited: 2020-08-14

Scheduled Tasks

According to the customized task, it will clean up your system registry regularly.

You can select run type from here. If you choose On Idle, it will start to scan and clean while the CPU is free.

The task will remember and clean your last selected items.



©2006-2020 WiseCleaner.com all right reserved, powered by GitbookEdited: 2020-08-26

Menu & Settings

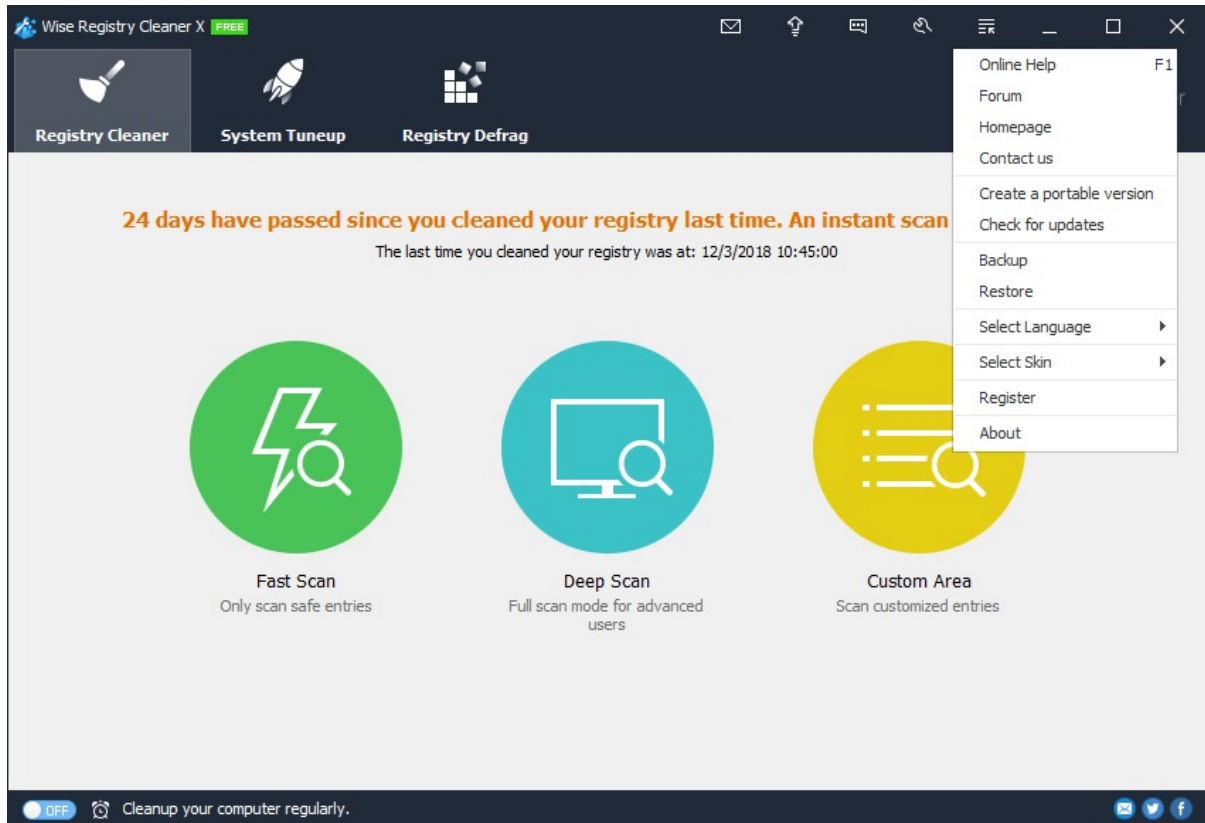
3.1 Menu

3.2 Settings

©2006-2020 WiseCleaner.com all right reserved, powered by GitbookEdited: 2020-08-14

Menu

The Menu of Wise Registry Cleaner has many features, such as **Help Online**, **Forum**, **Home Page**, **Contact us**, **Create Portable version**, **Check for updates**, **Back**, **Restore**, **Register**, **Change license key**, **Languages**, **Select Skin**, **About**.



1. Create Portable version

Portable version, you can move it to a removable device (a USB device), run Wise Registry Cleaner easily in other Windows system without installing.

2. Back and Restore

See details in section 4 of How To Use, [Backup & Restore](#).

3. Select Skin

You can customize Wise Registry Cleaner skin color.

4. Languages

Wise Registry Cleaner supports 45 languages, English, Arabic, Belarusian, Bengali, Bulgarian, Catalan, Chinese Simplified, Chinese Traditional, Croatian, Czech, Danish, Dutch, Estonian, Finnish, French, Georgian, German, , Greek, Hungarian, Indonesian, Italian, Japanese, Korean, Kurdish, Lithuanian, Norwegian, Persian, Polish,

Portuguese, Romanian, Russian, Serbian, Slovak, Slovenian, Spanish, Swedish, Tajik, Thai, Turkish, Ukrainian, Vietnamese

©2006-2020 WiseCleaner.com all right reserved, powered by GitbookEdited: 2020-08-26

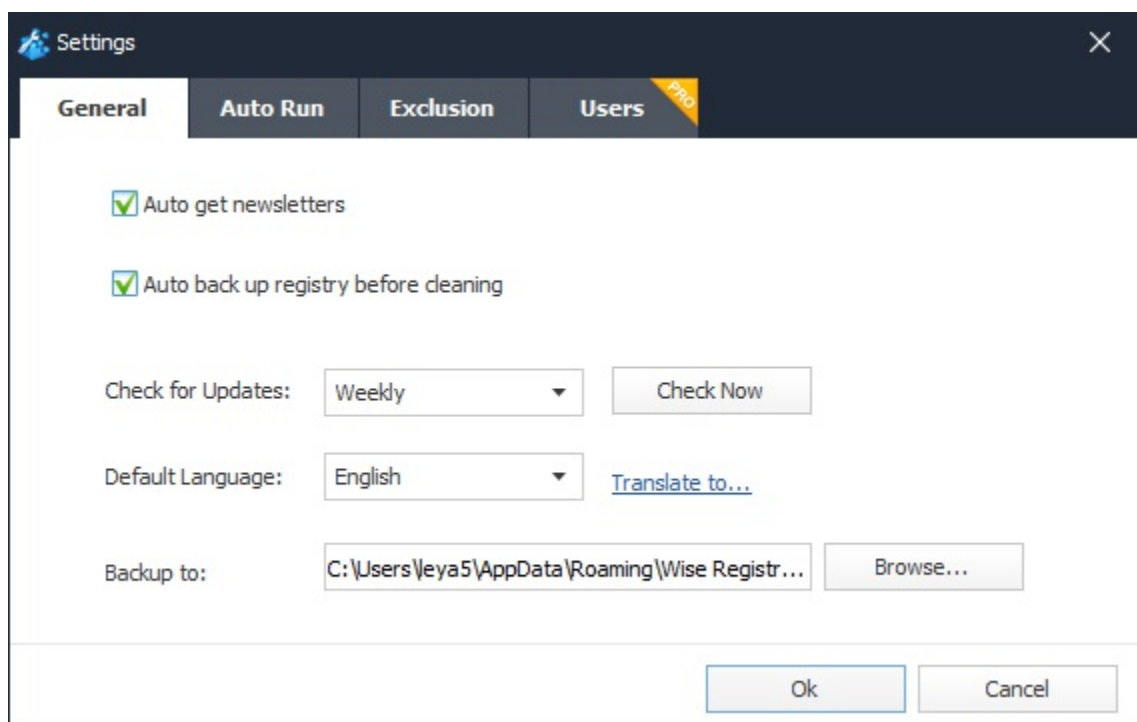
Settings

In Settings window you can change the settings of Wise Registry Cleaner. All settings can be found under these 4 sections: [General](#), [Auto Run](#), [Exclusion](#), [Users](#).

1. General

This tab has 5 settings:

- **Auto get newsletters**
- **Auto back up registry before cleaning** We strongly recommend **ENABLE** this feature! You can restore removed registry entries from [Restore center](#).
- **Check for updates** You can customize frequency: Daily, Weekly, Monthly, Never (Not recommended)
- **Default Language** You can change software language to your mother tongue.
- **Backup to** You can customize the registry backup folder.

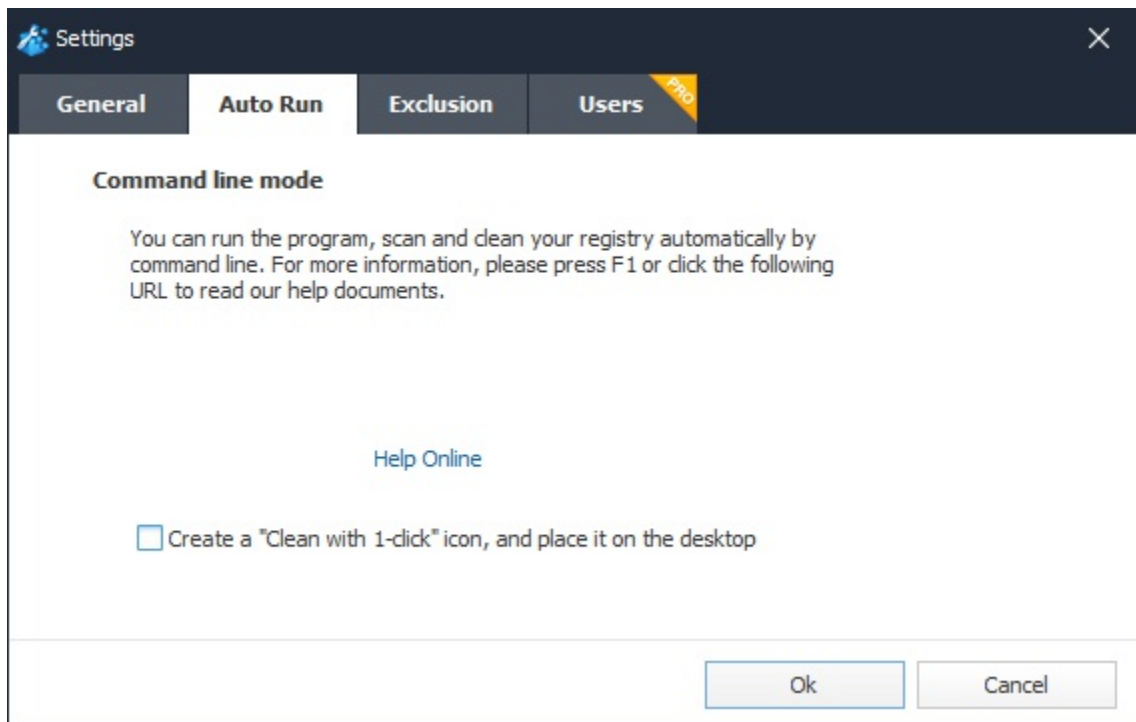


2. Auto Run (Clean with 1 click)

Here, you can create a "Clean with 1 click" icon and place this icon on the desktop. You just need to double click this icon can run registry cleaner silently (run in background, without opening Wise Registry Cleaner window.)



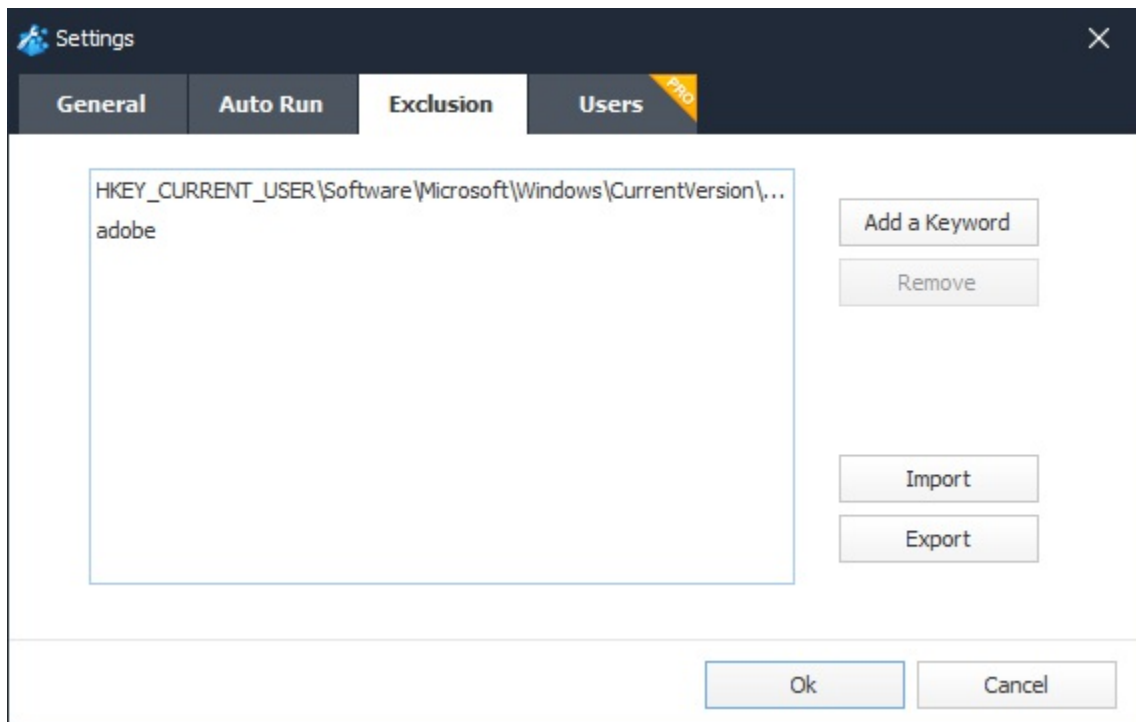
"Clean with 1 click" is as the same as **Command Line** mode.



3. Exclusion

All ignored entries in scanning result list will be added into this exclusion list automatically. Of course you can click "Add a keyword" to add a new exclusive registry entry.

All entries in this list will be ignored. This list supports wildcard, such as '*' and '?'. So, it's easy for you to add any keywords into this list.

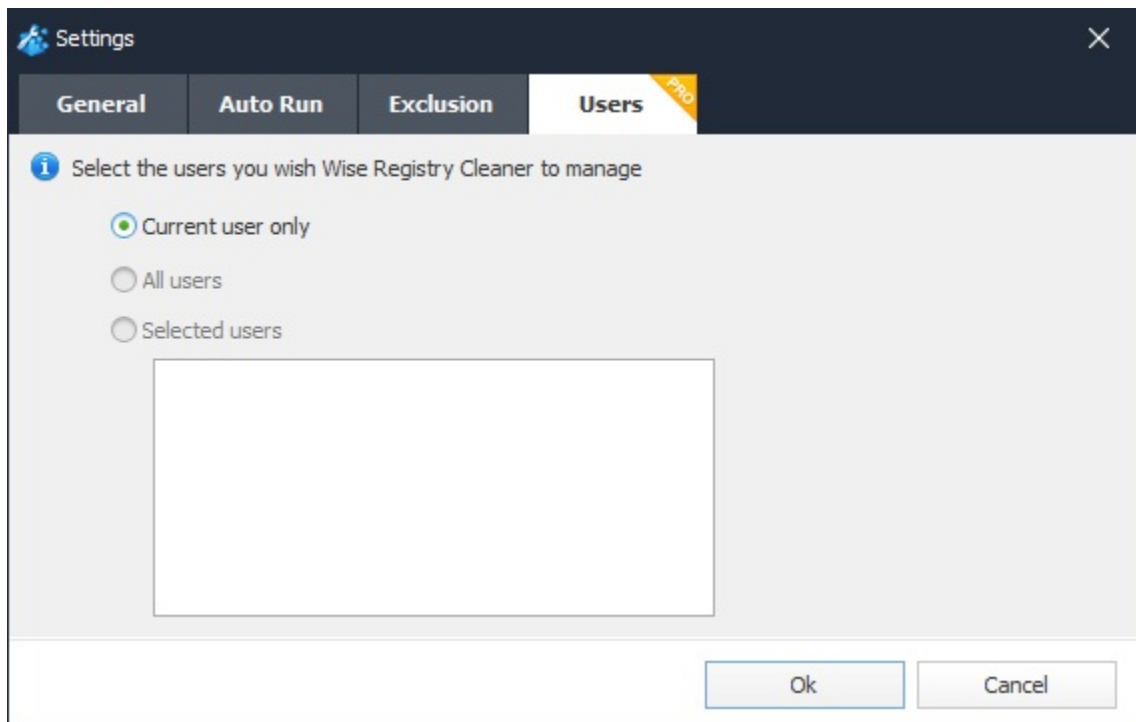


E.g.,

- Add **HKEY_CURRENT_USER\Software\Microsoft\Windows\CurrentVersion\Explorer\RecentDocs** to exclusion list, Wise Registry Cleaner will not clear **File Explorer history**.
- Add **adobe** as the exclusion keyword, Wise Registry Cleaner will not clear a registry entry which name or path contains keyword "adobe".

4. Users

You can choose user account registry you want to clean. (This is only available for Wise Registry Cleaner Pro version)



©2006-2020 WiseCleaner.com all right reserved, powered by GitbookEdited: 2020-08-26

About WiseCleaner

[4.1 About Us](#)

[4.2 Awards](#)

[4.3 Help Us](#)

©2006-2020 WiseCleaner.com all right reserved, powered by GitbookEdited: 2020-08-13

About WiseCleaner

Who are we?

WiseCleaner started in February 2005 after many years of preparation. The company specializes in developing freeware and shareware for Windows, system tune-up utilities, and other software, such as our "Free YouTube Utility". Presently, many senior tech members work for the company. And we are setting up a special retail system and support network to provide the best possible service. The company is expanding into diverse forms of system utilities for our customers.

Contact Us

- For technical support, please contact support@wisecleaner.com
- Pre-sales questions and order problems, please contact sales@wisecleaner.com
- Any Media-related inquiries, please contact press@wisecleaner.com
- Any cooperation, please contact partner@wisecleaner.com

Official Websites

English: <https://www.wisecleaner.com>











中文(中国): <https://www.wisecleaner.com.cn>

Deutsch: <https://www.wisecleaner.eu>

日本語: <https://jp.wisecleaner.com>

©2006-2020 WiseCleaner.com all right reserved, powered by GitbookEdited: 2020-08-13

Awards of WiseCleaner

Learn more about [WiseCleaner awards](#).

©2006-2020 WiseCleaner.com all right reserved, powered by GitbookEdited: 2020-08-13

Donation

Donating to us is the direct way to help us to develop and maintain Wisecleaner products. Please use the following "Donate" button to help us.



Localize Wisecleaner

Our software supports multiple languages, you can [read this page](#) to see which languages have been included in our software. If you can help us to translate the materials about our software to your mother tongue, you will get a free license key once your translation is adopted by our editor! For example, you will get a license key of Wise Care 365 after your translation to Wise Care 365 or translations to Wise Disk Cleaner and Wise Registry Cleaner being adopted.

Recommend Wisecleaner to Others

You are always appreciated to recommend our products to your families, friends, classmates or colleagues etc. You can introduce it on your blog, facebook, twitter, youtube and so on. Of course, you can follow us from below links:



©2006-2020 WiseCleaner.com all right reserved, powered by GitbookEdited: 2020-08-13